

SMR Series

8/16/32CH Megapixel RAID NVR

Network Video Recorder



- 8/16/32 CH Smart Megapixel Video Recorder
- Built In Intel ICH9R Hardware RAID
- 2/5/8 x Hot Swappable Hard Disk
- Real Time VI Detection
- Low Power Consumption
- In House Design & Production
- Built in VGA for Local Display
- 3 Year Warranty

VMS Specifications

Live View	<ul style="list-style-type: none"> • Real-time network camera discovery • HTML and image overlays • View patrolling for single or multiple views • Real time video/event alarm display • Instant playback • Video clip bookmarking
eMAP	<ul style="list-style-type: none"> • Hierarchical map structure • Real time event alert • Multiple maps supported
Investigation	<ul style="list-style-type: none"> • Search by date, time, camera, recent time • Search by event conditions, post VI analysis • Video clip bookmarking and commenting • 1/8, 1/4, 1/2, 1x, 2x, 4x, 8x play, pause, stop • AVI-formated video clip export • 4-channel synchronized playback*
Video Intelligence	General motion, missing object, foreign object, intrusion, forbidden area, tampering detection, virtual fence*, object counting*
Recording Policy	<ul style="list-style-type: none"> • Scheduled, event-driven, manual recording • Pre-/post- alarm recording (up to 45 minutes)
Remote Management	Full functional operation & management via standalone VMS Client
3rd Party IPCAM	AXIS, SONY, Panasonic, Mobotix, Arecont Vision, IQinVision, Zavio, VIVOTEK, ACTI, D-Link, Asoni, AVTech
General & Misc	<ul style="list-style-type: none"> • Image enhancement • Video privacy mask • PTZ functionality, digital zoom in, zoom out • Digital I/O management • Built-in RAID storage management • Digital watermark proofing* • Language supported: English, French, German, Portuguese, Spanish, Simple Chinese, Traditional Chinese, Japanese

* Available in VMS 2.4.5

Hardware Specifications

System Processor	Intel® ATOM525 Dual Core @ 1.8GHz
System Memory	DDR3 2GB
Chipset	Intel® ICH9R
DOM	4GB
Storage	3.5" SATA HDDs x2 for SMR2008, x5 for SMR3016 ; HDD hot swappable
I/O Interface	<ul style="list-style-type: none"> • VGA: 1x D-Sub • RJ-45: 2x 1Gigabit Ethernet • USB: 4x USB2.0 • E-SATA: x1
H/W RAID	RAID 0, 1, 5*
Electrical	<ul style="list-style-type: none"> • Input voltage: 100V~240V, 1.5A • Frequency SMR2008: 50Hz~60Hz; SMR3016: 47Hz~63Hz • Power consumption (in operation) SMR2008: 14W; SMR3016: 43W
Operating Environment	<ul style="list-style-type: none"> • In operating • Humidity: 5% to 80% (non-condensing) • Temperature: 5° to 40°C
LCD Panel	Yes**
LED Indicator	Yes
Dimensions	SMR2008: 190(H) x 110(W) x 245(D) mm; SMR3016: 225(H) x 175(W) x 245(D) mm
Weight	SMR2008: 0.91 Kg / 1.9 Kg; SMR3016: 5.1 Kg / 6.5 Kg
Certificate	BSMI, CB, FCC / CE Class A, UL60959/ IEC 60950, CCC for power only, GOST

* RAID 5 is supported by SMR3016, SMR5032

** LCD Panel is supported by SMR3016, SMR5032

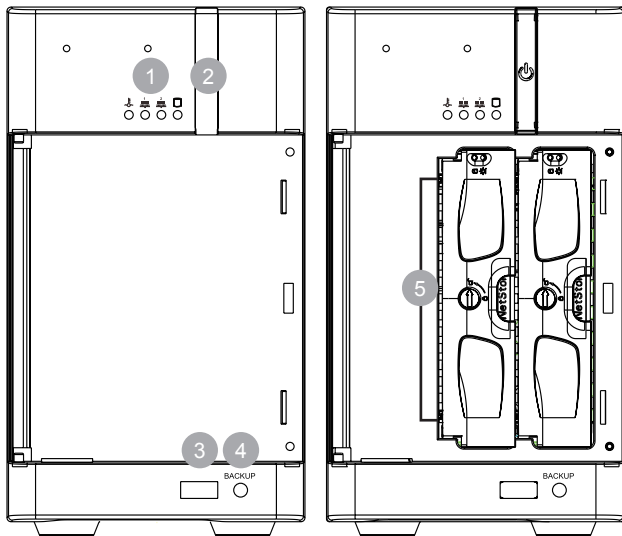
SMR Series

8/16/32CH Megapixel RAID NVR

Network Video Recorder

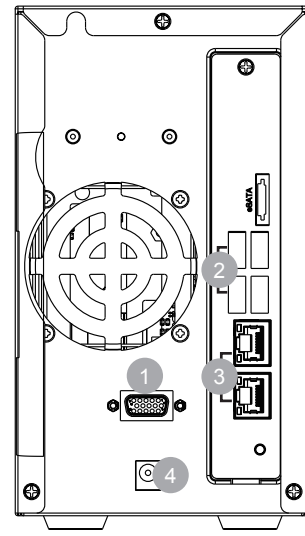
Part Names and Functions (SMR2008/SMR2016)

Front View



- 1 LED Indicators
- 2 Power Switch
- 3 USB
- 4 Video Back Up Button
- 5 Hot Swappable HD Tray

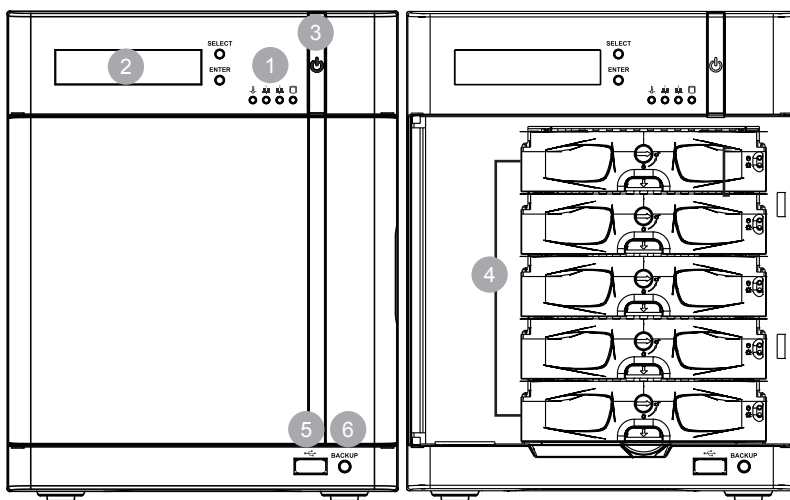
Rear View



- 1 VGA
- 2 4 x USB
- 3 Ethernet
- 4 12V DC Jack

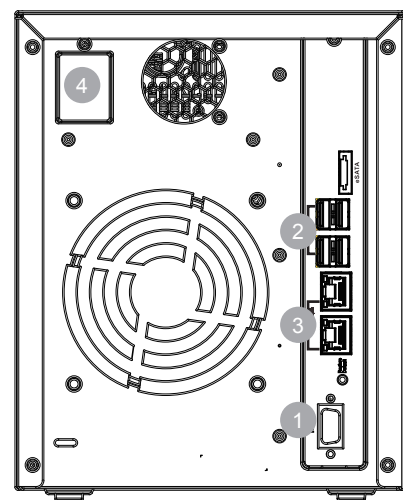
Part Names and Functions (SMR3016/SMR3025)

Front View



- 1 LED Indicators
- 2 LCD Display
- 3 Power Switch
- 4 Hot Swappable HD Tray
- 5 USB
- 6 Video Back UP Button

Rear View



- 1 VGA
- 2 4 x USB
- 3 Ethernet
- 4 Power Supply

Ordering Information

Part Number	Description
SMR2008	8CH, 14+ days recording w/ RAID 1
SMR2016	16CH, 7+ days recording w/ RAID 1
SMR3016	16CH, 30+ days recording w/ RAID 5
SMR3025	25CH, 14+ days recording w/ RAID 5
SMR5020	20CH, 30+ days recording w/ RAID 5
SMR5032	32CH, 30+ days recording w/ RAID 5

* Recording at bit rate = 2Mbps, 12 hours per day

Optional Accessories

Part Number	Description
IH72A1A2322G0	Hitachi desktop SATA II, 2TB, 7200RPM