



C•CURE NetVue is an option within C•CURE 800/8000 that provides seamless integration with a variety of digital video management systems (DVMS). This integration not only allows users to tie an event generated on C•CURE 800/8000 to a video clip, but also to automatically activate events based on alarms received from the DVMS.

Using C•CURE NetVue, an administrator can double-click on camera icons next to events, such as “Door Propped Open”, which are generated on the C•CURE 800/8000 Monitoring Station. When the C•CURE NetVue window opens, the administrator can watch live video or “rewind” the video clip to the point where the event occurred. The video clips can easily be saved as .AVI files for archiving or emailing.

FEATURES & BENEFITS

- Integrated access control and digital video for enhanced security
- Support for multiple DVMS:
 - American Dynamics - Intellex®
 - NICE® Systems - NiceVision® Pro and Harmony
 - Verint® Systems (Loronix) - CCTVware®
 - Integral Technologies™ - DS XPress® and DVXi® (API v1.3.0.162/DVR v4.1x)
- View live and/or recorded video from multiple cameras via pop-up windows
- Pan/Tilt/Zoom (PTZ), iris and focus controls via switcher
- Operator and action triggered support for PTZ presets and patterns based upon event, alarm, input¹ or Video Tour (Intellex only)
- Video Tour start and stop time included in journal report (Intellex and NICE only)
- Replay up to 4 cameras - same time interval - in quad format (Intellex only)
- Display up to 4 live video windows on event activation
- Multiple video window formats - toggle between regular (1x) and large (4x)
- User-selectable positioning/anchoring of windows
- Security features ensure that the original recorded video cannot be altered in any way (Intellex only)
- Supports operator restrictions based on cameras and video operations
- View live video from cameras represented by camera/dome icons on maps
- View recorded video clips from event tiles on monitoring station

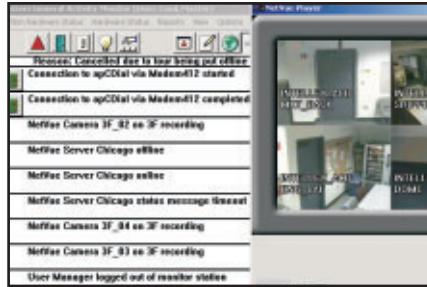
¹ Operator and action triggered support for PTZ presets based upon input (NICE only)

FEATURES

Integrated Access Control and Digital Video

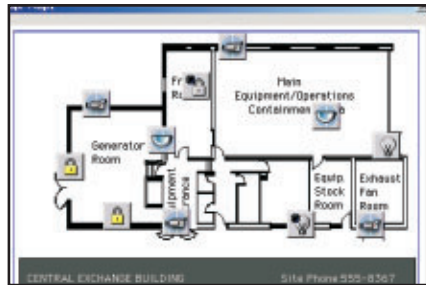
C•CURE 800/8000's Monitoring Station displays a video tile for every event. In addition to the date and time stamp, these tiles can contain one or more of the following icons: cardholder image, door, input/output, NetVue and maps.

Any C•CURE 800/8000 event can trigger a NetVue action, such as storing a video clip with pre- and post-event times. NetVue leverages the tile format by allowing the user to double click on the NetVue icon and easily display a NetVue window with "VCR like" controls to easily view the video clip. Users can also use the Export button on the popup window to save video clips in standard file formats like .AVI.



Maps

C•CURE 800/8000's Monitoring Station can also display maps (on event activation) with NetVue icons (camera, dome) providing the user the ability to view live video from cameras/domes. By double-clicking the camera/dome icon a NetVue window will appear showing the live video feed from the camera/dome. In the case of a dome, an additional Pan/Tilt/Zoom GUI will appear to allow the user to control domes that are interfaced to video switchers.



Journal Replay

Unique identifiers associated with NetVue video clips are captured in the C•CURE 800/8000 journal. The user can click on the NetVue icon from the Journal Replay to observe the associated video segment.

Video Tour and Video Views²

The Video Tour feature allows users to view live video from a pre-configured collection of cameras. Starting with the first camera, video will display for a fixed amount of time then the tour will automatically advance to the next camera. This process continues until the last camera in the tour is reached, or indefinitely if looping is enabled. Users can pause or alter the direction of the tour while still retaining full access to recording, text overlay, pan/tilt/zoom (PTZ) and bi-directional functionality.

The Video View feature allows users to pre-select a group of cameras, position them in a grid (1x1, 2x2, 3x3 or 4x4), indicate the NetVue Player size and determine its initial text overlay status. The user can then save this collection as a "Video View" for future viewing.

Presets/Patterns

NetVue users interfacing with NICE can PTZ the camera to move to a preset position based upon the operator's input.

NetVue users interfacing with Intellex can establish presets and patterns via an operator, action or tour stop configuration. The PTZ camera can move to a preset position or follow a pattern based upon an event, alarm, input or Video Tour.

² Video Tour - Intellex and NICE only; Video Views - Intellex only

For Product Information
Software House
1-800-550-6660
www.swhouse.com

SPECIFICATIONS

C•CURE 800/8000 Server Recommended Minimum Requirements

Processor

Model Number 1 through 10 1.5 GHz Intel Pentium III or higher
 Model Number 20 through 40 1.8 GHz Intel Pentium III or higher
 Model 8000 and 8000 Plus 2.4 GHz Intel Pentium IV or higher
 Free Hard Disk Space 3.0 GB

Memory

Model Number 1 through 40 1 GB RAM
 Model 8000 and 8000 Plus 2 GB RAM
 Network Card 10/100 Base-T
 CD-ROM Drive 10X
 Monitor/Video Adapter board 17" SVGA (1024 x 768)
 Operating Systems MS Windows® 2000 Professional (Service Pack 4)
 MS Windows 2003 Server
 MS Windows XP Professional (Service Pack 2)
 Mouse PS/2 bus type
 Ports 2 serial, 1 parallel, USB (with C•CURE 800 v8.x a USB port is required)
 Backup Tape or CDRW
 Modem 56.7 Kbps
 Sentinel Supplied by Software House
 Digiboard 8 port (Models 20/30/40)

C•CURE 800/8000 Client Recommended Minimum Requirements

Processor 1.5 GHz Intel Pentium or higher
 Free Hard Disk Space 2.0 GB
 Memory 512 MB RAM
 Network Card 10 Base-T
 CD-ROM Drive 10X
 Monitor/Video Adapter board 17" SVGA (1024 x 768), 64 MB RAM
 Operating Systems MS Windows® 2000 Professional (Service Pack 4)
 MS Windows XP Professional (Service Pack 2)
 Mouse PS/2 bus type

DVMS Minimum Requirements

Intellex (DV16000, DV8000) v2.4, v3.x
 NICE Systems (NiceVision) v6.x
 Verint/Loronix (CCTVware) v4.0
 Integral Technologies (DS XPress and DVXI) API v1.3.0.162/DVR v4.1.x
 (requires C•CURE 800/8000 v7.0 or higher)

Note: It is recommended that customers use the most current firmware release for each controller.