



C•CURE NetVue is an option within C•CURE 800/8000 that provides seamless integration with digital video management systems, such as American Dynamics' Intellex, Nice Systems NiceVision, or Loronix CCTVware. This integration not only allows users to tie an event generated on C•CURE 800/8000 to a video clip, but also to automatically activate events based on alarms received from the DVMS.

Using C•CURE NetVue, an administrator can double-click on camera icons next to events, such as "Door Propped Open", which are generated on the C•CURE 800 Monitoring Station. When the C•CURE NetVue window opens, the administrator can watch live video or "rewind" the video clip to the point where the event occurred. The video clips can easily be saved as .avi files for archiving or emailing.

## FEATURES & BENEFITS

- Integrated access control and digital video for enhanced security
- Support for multiple DVMS:
  - American Dynamics – Intellex
  - Nice Systems – NiceVision
  - Loronix – CCTVware
- View live and/or recorded video from multiple cameras via pop-up windows
- Powerful and easy to use mouse based GUI
- Pan/Tilt/Zoom (PTZ), Iris and focus controls via switcher
- PTZ Preset support via switcher or ADTTE16 (Intellex only)
- Replay up to 4 cameras – same time interval – in quad format (Intellex only)
- Display up to 4 live video windows on event activation
- Multiple video window formats – toggle between regular (1x) and large (4x)
- User selectable positioning/anchoring of windows
- Support for multiple PC monitors
- View recorded and live video from same camera
- Video clips can be saved in standard formats for easy archiving or emailing
- Security features ensure that the original recorded video cannot be altered in any way (Intellex only)
- Supports operator restrictions based on cameras and video operations
- View live video from cameras represented by camera/dome icons on MAPs
- View recorded video clips from event tiles on monitoring station
- On-line context sensitive help

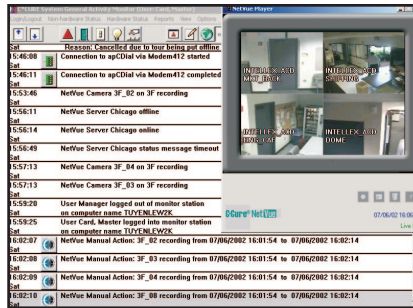
## FEATURES

C•CURE NetVue is an innovative feature that brings the power of digital video and access control together in one seamless interface.

### Integrated Access Control and Digital Video

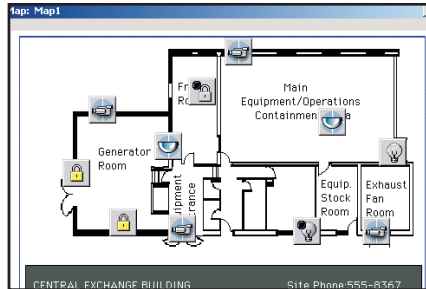
C•CURE 800/8000's Monitoring Station displays a tile for every event. In addition to the date and time stamp these tiles can contain one or more of the following icons: cardholder image, door, input/output, NetVue and Maps.

Any C•CURE 800 event can trigger a NetVue action, such as storing a video clip with pre and post event times, and NetVue can automatically activate events based on the alarms received from the DVMS. NetVue leverages the tile format by allowing the user to double click on the NetVue icon and easily display a NetVue window with "VCR like" controls to easily view the video clip. Users can also use the Export button on the popup window to save video clips in standard file formats like .avi.



### Maps

C•CURE 800/8000's Monitoring Station can also display Maps (on event activation) with NetVue icons (camera, dome) providing the user the ability to view live video from cameras/domes. By double-clicking the camera/dome icon a NetVue window will appear showing the live video feed from the camera/dome. In the case of a dome, an additional Pan/Tilt/Zoom GUI will appear to allow the user to control domes manually or via pre-sets that are interfaced to video switchers.



### Journal Replay

Unique identifiers associated with NetVue video clips are captured in the C•CURE 800 journal. The user can click on the NetVue icon from the Journal Replay to observe the associated video segment.

### Network Ready

NetVue users can connect Digital Video Servers to any existing network with 10/100 Base-T Ethernet.

### Scalable and Easy to Use

NetVue supports virtually an unlimited number of digital video systems making it a completely scalable solution. It has an extremely easy to use interface which provides the user with complete viewing control.

**For Product Information**  
**Software House**  
**1-800-550-6660**  
**www.swhouse.com**

## SPECIFICATIONS

### C•CURE 800/8000 Server Minimum Requirements

<b>Processor</b>	
Model Number 1 and 5 . . . . .	400 MHz Intel Pentium III or higher
Model Number 10 and 20 . . . . .	600 MHz Intel Pentium III or higher
Model Number 30 and 40 . . . . .	1.0 GHz Intel Pentium III or higher
Model 8000 and 8000 Plus . . . . .	1.5 GHz Intel Pentium III or higher
Free Hard Disk Space . . . . .	2.0 GB
<b>Memory</b>	
Model Number 1 and 5 . . . . .	256 MB RAM
Model Number 10 and 20 . . . . .	256 MB RAM
Model Number 30 and 40 . . . . .	512 MB RAM
Model 8000 and 8000 Plus . . . . .	512 MB RAM
Network Card . . . . .	10base-T
CD-ROM Drive . . . . .	10X
Monitor/Video Adapter board . . . . .	17" SVGA (1024 x 768)
Operating Systems . . . . .	Windows® 2000 Server, Windows NT 4.0 (Service Pack 5)
Mouse . . . . .	PS/2 bus type
Ports . . . . .	2 serial, 1 parallel
Tape Drive (optional) . . . . .	10 GB
Modem (optional) . . . . .	56.6 Kbps
Sentinel . . . . .	Supplied by Software House
Digiboard (optional) . . . . .	8 port (Models 20/30/40)

### C•CURE 800/8000 Client Minimum Requirements

Processor . . . . .	400 MHz Intel Pentium or higher
Free Hard Disk Space . . . . .	2.0 GB
Memory . . . . .	256 MB RAM
Network Card . . . . .	10base-T
CD-ROM Drive . . . . .	10X
Monitor/Video Adapter board . . . . .	17" SVGA (1024 x 768)
Operating Systems . . . . .	Windows® 2000 Professional, Windows NT 4.0 (Service Pack 5)
Mouse . . . . .	PS/2 bus type
Ports . . . . .	2 serial, 1 parallel
Modem (optional) . . . . .	56.6 Kbps

### DVMS Minimum Requirements

Intellex (DV16000, DV8000) . . . . .	v2.4, v3.x
Nice Systems (NiceVision) . . . . .	v2.0, v6.x
Loronix (CCTVware) . . . . .	v4.0

**Note:** It is recommended that customers use the most current firmware release for each controller.



SS041\_0803  
©2003

Product specifications and availability subject to change without notice. Certain product names mentioned herein may be trade names and/or registered trademarks of other companies.