



## B24 15dBi



**SKU: SILB24i**

### ■ Features

- 11Mbps
- Lower total cost of Point to Multipoint wireless system
- IP Router + NAT
- Designed for Outdoor application
- IEEE802.11b
- 3 LED's
- Point-to-Point
- Point-to-Multipoint
- PoE

### ■ What is the B24 15dBi?

The B24 15dBi is an outdoor 11 Mbps wireless Inter-building Bridge/AP/station adapter with router and integral 15dBi antenna.

Designed specifically for Wireless ISPs and IT professionals to provide wireless broadband network services, the B24 15dBi delivers outstanding network availability and radio performance. The unit transmits at an effective radiated power of 2500mW (34dBm) with an enhanced system sensitivity of -105dBm for maximum coverage.

Typical usages include Wireless ISP, WLAN public "hot spot", satellite office WAN, mobile internet POP, and school campus networks.

The B24 15dBi is also the solution of choice for linking networks that are impossible to connect using wired alternatives, including networks separated by difficult terrain, or water.

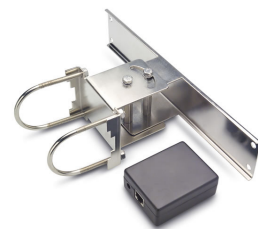
### ■ The advantages of the B24 15dBi

● Stable and reliable network. Being Weatherproof and having a rugged design, the B24 15dBi is perfectly designed to meet the needs of the harshest outdoor environments.

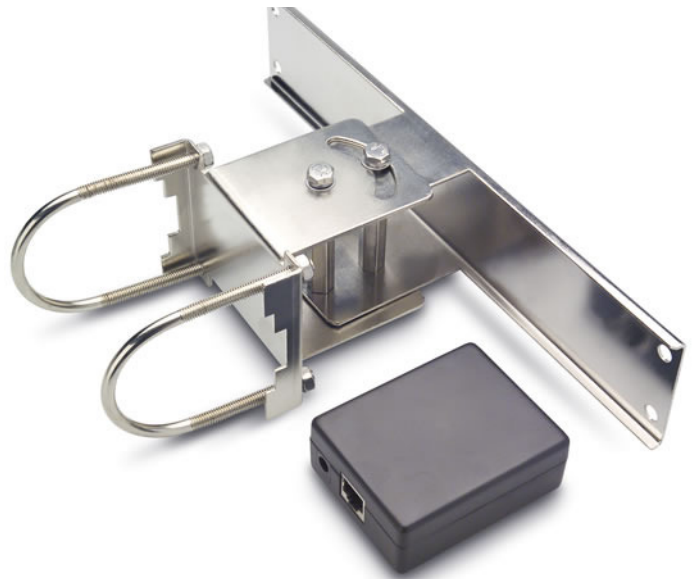
● Simple network structure. Easy to install. Power over Ethernet functionality requires only a single Ethernet cable between the LAN and the B24 15dBi for sufficient power.

### Contents

- B24 15dBi \*1
- Mounting bracket \*1
- Product CD \*1
- Power Adapter(24V) \*1



Feature	
Rate select	11 5.5 2 1 Mbps, auto select
Frequency	2.412 ~ 2.484 GHz
Bridge mode-PtP	Yes
Bridge mode-PtMP	Yes
Repeater	Yes
Router	NAT, bridge pass-thru (non-TCP/IP)
Test Link	Yes
Link status	Yes
DHCP Client	Yes
Standards	IEEE802.11b IEEE802.3/u (10/100BaseT RJ-45) IEEE802.3af
Support protocol	TCP/IP IPX NETBEUI
Security	
WEP Encryption	64 / 128 bits
Mac address filter	Yes
Physical	
Antenna	15dBi Panel antenna
LAN/WAN	One 10/100BASE-T (RJ-45) LAN Port
Default button	Yes
LED	POWER/LINK/LAN
Power	24VDC/1A Compliant to IEEE802.3af
Channel (Country Dependent)	USA (FCC): 11 Japan: 14 Europe (ETSI): 13 France: 4 Spain: 2
RF output power	34dBm
Sensitivity	-98dBm@11Mbps
Dimensions	27.7 x 27.7 x 8.0 (cm)
Weight	1.4Kg
Management	
WEB	Yes
Windows-based utility	Yes
SNMP MIB	Yes
Telnet	Yes
Environment	
Operating Temperature	-15~55°C
Humidity	5~80 %



## B24 Series Product Information

### B24 15dBi X

#### Wireless Outdoor Access Point/Bridge

◆ Integrated 15dB antenna. Supports POE and 24V DC. Work at 2.4 GHz with encryption. Point to point and point to multipoint.

SKU: SILB24i

### B24 Bridge X

#### Wireless Outdoor Access Point/Bridge

◆ External port with N Type connector. supports POE. Work at 2.4 GHz. 11 Mbps. Point to point, point to multipoint.

SKU: SILB24BR

Distributed by:

Copyright © SilverNet Limited. All rights reserved. All rights reserved. All other company and product names may be trademarks of their respective companies. Whilst every effort is made to make sure the information shown is accurate SilverNet Limited cannot accept liability for any errors that may arise.

No freedom to use information, patents, trade marks, or other intellectual property rights is implied by the publication of this document. E&OE

SilverNet Limited reserve the right to change specifications and other information within this document without notice and your attention is brought to the fact that performance figures are under ideal conditions. Actual performance will depend on many environmental factors and it is recommended that a site survey if undertaken prior to installation.

Please also note that this equipment may also be subject to local legislative restrictions such as Band C operation within the UK. It is the end users responsibility to ensure that the installation complies with any such restrictions that are in force.