



A5 19dBi CPE



SKU: SILA5CP

■ Features

- IEEE802.11a
- OFDM
- Link Test
- Signal Status Display by Led Line
- WEB Management
- Poe Power
- Integrated 19dBi panel antenna
- Built-in surge protection
- 24V DC
- IR2007 Compliant
- Designed for Outdoor applications
- Lower total cost of Point to Multipoint wireless system

■ What is the A5 19dBi CPE?

A5 19DBi CPE works at 5GHz and is compatible with the 802.11a standard. With high throughput and long-distance transmission, it is the right solution for carriers, service providers and enterprises. As an outdoor remote client, A5 19dBi CPE can help integrators easily build up broadband access system.

Clients can quickly build up stable Point to Multipoint wireless broadband access system for "Last miles access" at low cost.

This radio will save money, while servicing the need to construct a Point to Multipoint wireless system.

■ The advantages of the A5 19dBi CPE

- Stable and reliable network. Being Weatherproof and having a built-in Surge Protector, the A5 19dBi CPE is perfectly designed to meet the needs of the harshest outdoor environments.

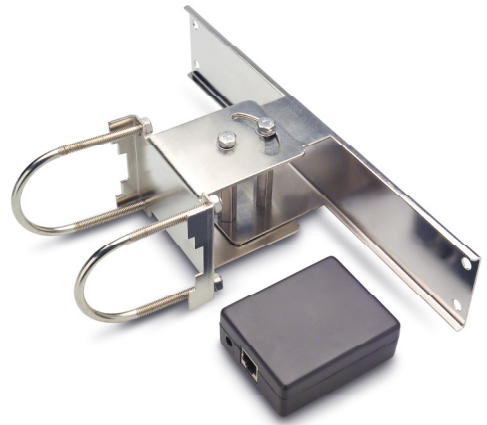
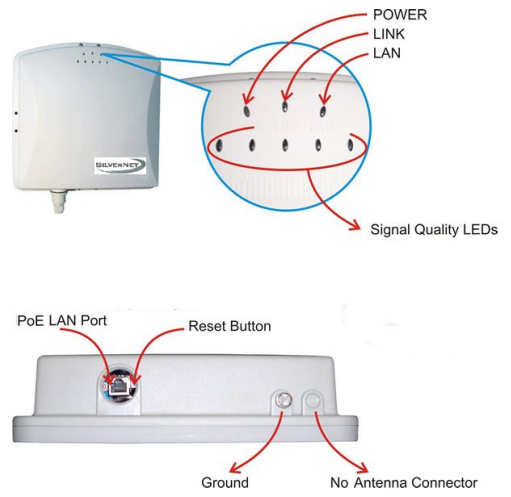
- Simple network structure. Easy to install. Power over Ethernet functionality requires only a single Ethernet cable between the LAN and the A5 19dBi CPE for sufficient power.

Contents

- A5 19dBi CPE *1
- Mounting brackets *1
- Product CD *1
- Power Adapter(24V) *1



Feature	
Rate	Best 54 48 36 24 18 12 9 6 Mbps
Working Mode	Client Mode
Link Test	Yes
Signal Indicators	0% <per<=10% 0 LED on 10% <per<=50% 1 LED on 50% <per<=80% 2 LED on 80% <per<=90% 3 LED on 90% <per<=100% 4 LED on Per=100% 5 LED on Per: Received Signal Ratio
Firmware upgrade	WEB, TFTP
Standards	IEEE802.11a IEEE802.3/u
Security	
WEP Encryption	64 / 128 / 152 bits
MAC Address filter	Supported
Physical	
Antenna	19dBi Planar Array 3dB BW: H:12° V:16° Polarization: Vertical or Horizontal
LAN/WAN	One 10/100BASE-T (RJ-45) LAN Port
Default button	Yes
LED	1-POWER, 1-LINK, 1-LAN, 5 Signal Indicator
Power	100-240VAC,50/60Hz, 24VDC/1.5A
Channel (Country Dependent)	USA (FCC): 5.15GHz 5.35GHz; 5.725GHz~5.825GHz Europe (ETSI): 5.47GHz 5.850GHz China: 5.725GHz 5.85GHz
RF output power	36dBm MAX
Power Consumption	200mA(Average)
Sensitivity	-65dBm@54Mbps
Dimensions	27.7 x 27.7 x 8.0 (cm)
Weight	1.5Kg
Management	
WEB	Yes
SNMP	Yes
Environment	
Operating Temperature	-10~60°C
Storage Temperature	-20~80°C
Humidity	5~95 %



A5 Series Product Information

A5 BRIDGE

Wireless Outdoor BRIDGE

◆ External port with N Type connector. supports POE. Work at 5.8 GHz. 54 Mbps. Point to point, point to multipoint.

SKU: SILA5BR

A5 23dBi Integrated

Wireless Outdoor bridge

◆ Integrated 23dB antenna. Supports POE and 48V DC. Works at 5.8GHz with encryption. WDS (AP + Repeater). Link Test. 54Mbps.

SKU: SILA5i

A5 BASE STATION

Multi-sector Access Point

◆ Integrated 16dBi 60° panel antenna or external antenna. Supports POE and 48V DC. Works at 5.8GHz with encryption.

SKU: SILA5BS

Distributed by:

Copyright © SilverNet Limited. All rights reserved. All other company and product names may be trademarks of their respective companies. Whilst every effort is made to make sure the information shown is accurate SilverNet Limited cannot accept liability for any errors that may arise.

No freedom to use information, patents, trade marks, or other intellectual property rights is implied by the publication of this document. E&OE

SilverNet Limited reserve the right to change specifications and other information within this document without notice and your attention is brought to the fact that performance figures are under ideal conditions. Actual performance will depend on many environmental factors and it is recommended that a site survey if undertaken prior to installation.

Please also note that this equipment may also be subject to local legislative restrictions such as Band C operation within the UK. It is the end users responsibility to ensure that the installation complies with any such restrictions that are in force.