

GPS Target Mapping and Configuration Software

SightLogix® SightMonitor® is a configuration and monitoring application for all devices in the SightLogix Automated Outdoor Video system. The SightMonitor system consists of Coordination System (CS) server software and one or more SightMonitor clients. In addition to configuration and management, SightMonitor displays the topological position and field of view of all cameras and detected intrusion events, overlaid on a geo-positioned aerial image of the surveillance area, to track the precise location of security events. The result is complete situational awareness over large outdoor areas.



Feature	Benefit
Displays GPS-based topological position and field view of all devices and detected targets, overlaid on a geo-positioned aerial image of the surveillance area	Quick determination of a target's exact geospatial coordinates relative to the area under surveillance. Maintain awareness over system device status
GUI-based setup and management of the SightLogix system and distribution to network video management system for display of video, GPS coordinates, and alarm and other information	Quick installation and configuration
Supports automatic SightSensor and SightTracker device discovery	Quick installation and configuration
Configurable tracking priority, including first target acquired, newest target, closest target, fastest moving target, and largest target	Automatically track the most relevant targets for your application
Supports password-protected user accounts with multiple user access levels (operator, administrator and security chief), and storage of multiple system configurations under password protected access	Flexible and secure administration
Supports simultaneous management of multiple sites to add, configure, calibrate, and monitor cameras remotely	No single point of failure for continuity of operations
Supports web-based access for multiple operators to view authorized sites via the SightMonitor client	Accommodates growth or change with a scalable platform
GUI-based GPS calibration of SightLogix devices	Accurately filters objects based on size and velocity; provides map-based situational awareness; does not require GPS device



Ordering Information

Part Number	Description
SL-SM-CS	SightLogix SightMonitor - Coordination and map-based target GPS display software

Accessories

- SightLogix Visible, WideView and Thermal SightSensor® long-range detection cameras. Refer to each SightSensor datasheet.

Specifications

Configuration Software (CS) Server Requirements

Processor	Intel Dual Core, minimum 2 GHz clock speed or higher
Memory	4 GB RAM
Operating System	Windows® Vista®, Windows® XP, or Windows® Server 2003

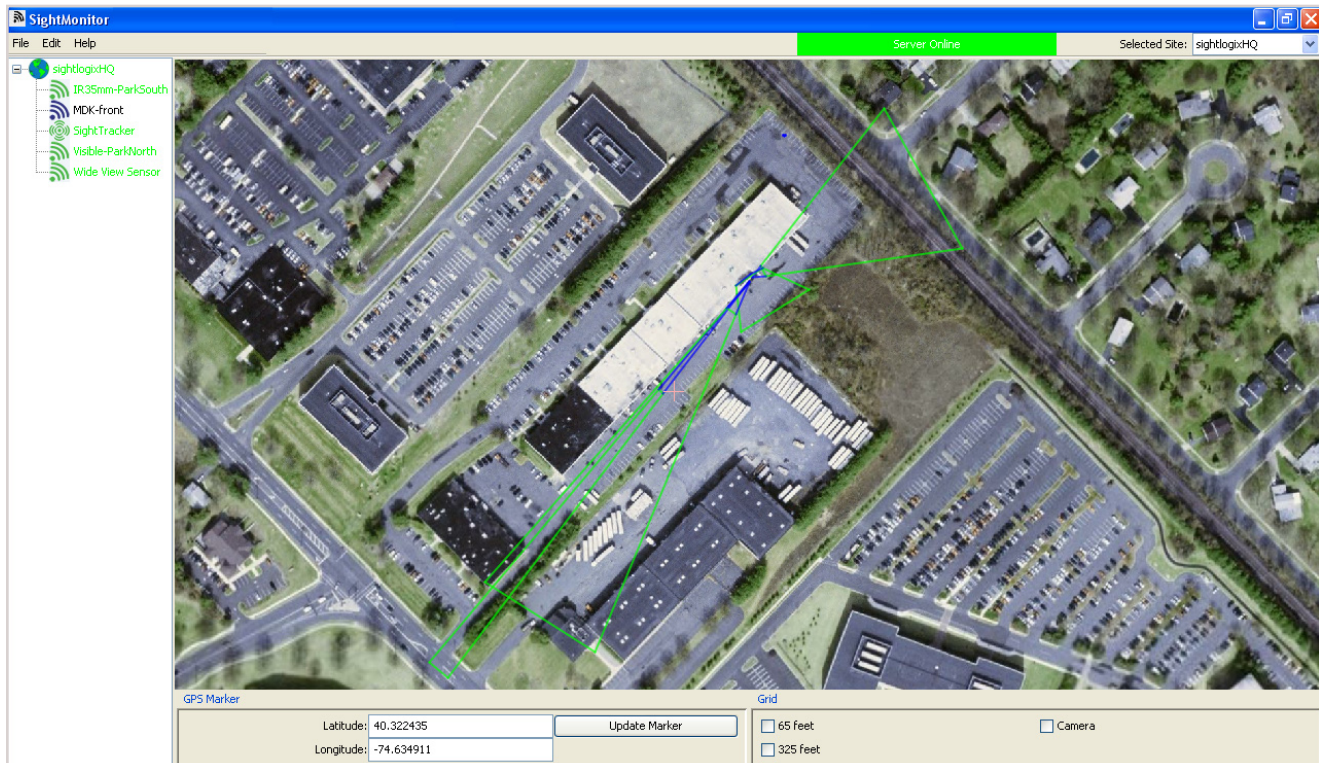
SightMonitor Client Requirements

Processor	Intel Dual Core, minimum 2 GHz clock speed
Memory	4 GB RAM
Operating System	Windows® Vista® or Windows® XP
Graphics Card	128-bit, 512 MB DDR minimum
Display System	Topological position and field of view of all video detection system units overlaid on geo-positioned aerial image of the surveillance area.
Aerial image format	Standard image formats (e.g. JPEG)
Target Display	GPS locations of all security violations overlaid on a geo-located aerial image of the surveillance area in real time via red dot markings

Target Tracking Output

Communications	Metadata via industry standard XML over a HTTP/HTTPS interface for third-party integration
Real-time Reporting	Objects tracked, camera name, serial number, firmware version, GPS position, bearing, and vital operating information
Tracked object parameters	Current time, alarm state, creation time, GPS position, size, heading, speed, aspect ratio, and alarm zone
SightTracker (optional)	Provides target GPS coordinates to allow PTZ camera positioning unit and continual target tracking

Specifications are subject to change without notice.



©SightLogix, Inc. SightLogix, SightSensor and SightMonitor are registered trademarks of SightLogix, Inc.