

rayMAX 200

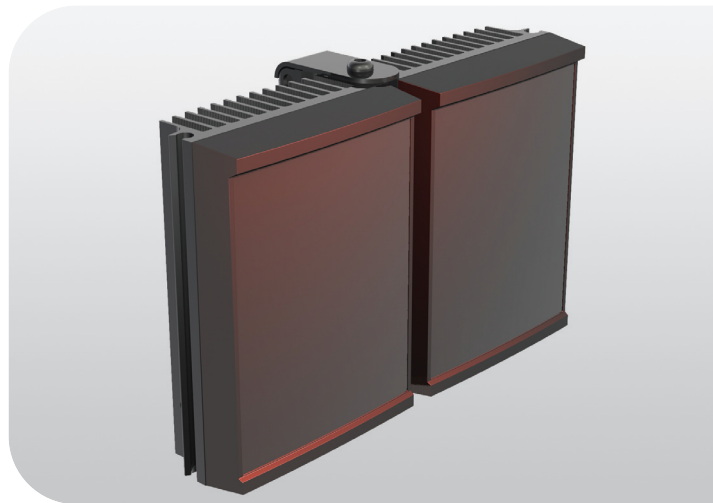
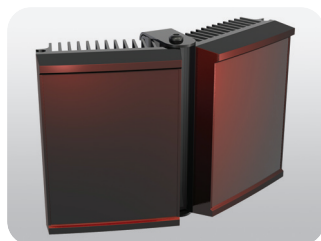
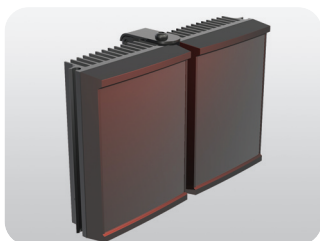
INFRA-RED PRODUCT RANGE

The RAYMAX series of High Performance Infra-Red LED illuminators provide class leading performance, long life and ultra low maintenance. They incorporate the very latest surface mount LED's to deliver excellent night-time pictures with improved optical output and outstanding reliability.

The unique Adaptive Illumination™ concept provides the flexibility to alter the angle of illumination on site to suit specific security needs and to match the camera's field of view. RAYMAX illuminators are also purpose designed to provide even output illumination.

Each unit is fitted with a Cool Running™ thermal management system to carefully control LED output and delivers a projected working life of 10 years.

RAYMAX illuminators are supplied with bracket and power supply. Control features on the power supply include adjustable power output, photocell and telemetry control. RAYMAX 200 is suitable for all low light installations up to 250 metres. (820ft)



POWERFUL

- Distances up to 250m (820ft)
- Latest LED technology

FLEXIBLE

- Adaptive Illumination™
- Fully Controllable Power Supply

RELIABLE

- 10 year life
- Cool Running™ thermal management system

CONTROLLED

- Zero Light Pollution
- Even Output Illumination
- Semi-Covert or Covert Options

rayTEC®

www.rayteccctv.com

ADAPTIVE ILLUMINATION™

Designed for RAYMAX Infra-Red and RAYLUX White-Light illuminators, Adaptive Illumination™ allows the installer to adjust the angle of the light projection from a single unit to fit the specific demands of any installation. Adjustment is quick and convenient and any angle from 30-60 degrees is easily selectable. Adaptive Illumination is patent pending technology available exclusively from Raytec.

COOL RUNNING™ Thermal Management System

Cutting edge materials science techniques have been employed to improve thermal efficiency throughout the unit. Cool Running™ is specifically designed to allow all Raytec LED products to provide exceptionally long life - up to 10 years.

SMT (Surface Mount Technology)

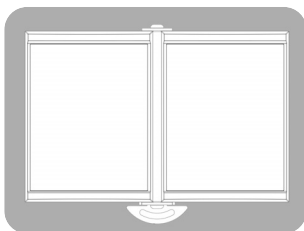
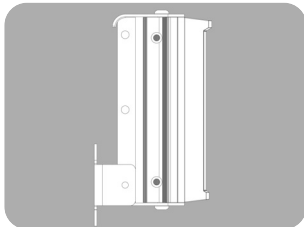
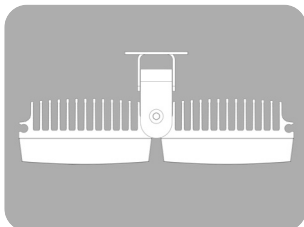
The future of lighting is surface mount LED technology. Compared to standard through hole LED's, surface mount LED's are a more robust solution increasing reliability and improving product life. They are also far more efficient at the dissipation of heat allowing the LED's to run at higher power and achieve significantly improved performance.

5 YEAR WARRANTY

All Raytec CCTV illuminators are provided with a 5 year warranty, unmatched anywhere in the CCTV lighting industry. Raytec illuminators provide guaranteed long life!



TECHNICAL SPECIFICATIONS



ILLUMINATOR

Max Distance: up to 250m (820ft)
Angle: Various - See Part Codes
Optics: SMT LED's
Consumption: 80W max
Voltage: 13.5V current controlled
Weight: 4kg
Environmental: IP66
Temp Range: -20 to +40°C (0 to 105°F)
Cable Length: 2.5m
Colour: Black
Wavelength: 850 or 950nm
Dimensions: 280 x 195 x 66mm

POWER SUPPLY

PSU Included
Input: Universal 100-240V AC auto-sensing
Output: 80W max
Temperature: -20 to +40°C (0 to 105°F)
PSU Features:
 Adjustable Photocell
 Adjustable power output for IR Telemetry Control
Other Available PSUs:
 Pulsed PSU with camera sync
 Premium PSU (includes camera power and photocell following contact)

BRACKETRY

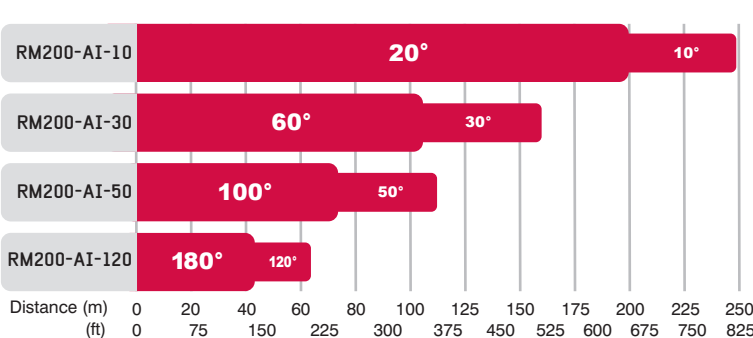
U Bracket and Adaptive Illumination bracket included

PART CODES

RM200-AI-10 RAYMAX 200, 10-20° AI, 850nm + PSU
 RM200-AI-30 RAYMAX 200, 30-60° AI, 850nm + PSU
 RM200-AI-50 RAYMAX 200, 50-100° AI, 850nm + PSU
 RM200-AI-120 RAYMAX 200, 120-180° AI, 850nm + PSU
 RM200-AI-50-C RAYMAX 200, 50-100° AI, 950nm + PSU

Other models available on request.

RAYMAX 200 ILLUMINATION DISTANCES



N.B Maximum distance is dependant upon camera/lens performance.

ALL RAYMAX DISTANCES

		METRES		FEET	
		Narrow	Wide	Narrow	Wide
RAYMAX 200	RM200-AI-10	249	200	817	656
	RM200-AI-30	160	106	525	346
	RM200-AI-50	112	74	367	243
	RM200-AI-120	64	42	210	139
RAYMAX 100	RM100-AI-30	80	53	262	173
	RM100-AI-50	56	37	184	121
	RM100-AI-120	32	21	105	69
RAYMAX 50	RM50-AI-30	40	26	131	87
	RM50-AI-50	28	18	92	61
	RM50-AI-120	16	11	52	35
RAYMAX 25	RM25-30	20	non AI	66	
	RM25-50	14	non AI	46	
	RM25-120	8	non AI	26	