

rayLUX 200

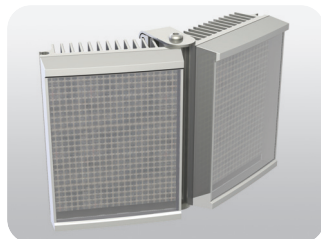
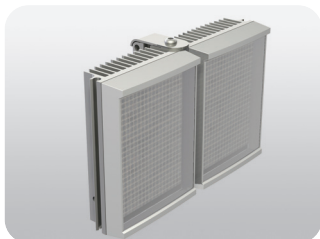
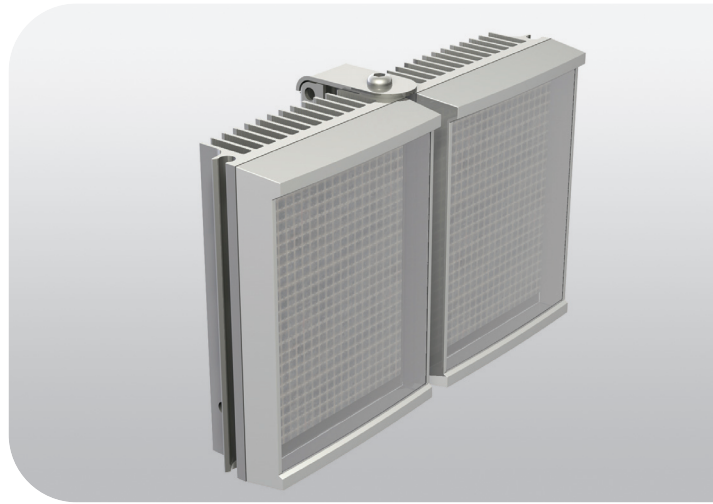
WHITE-LIGHT PRODUCT RANGE

Designed to be used with colour or day / night cameras the RAYLUX series of High Performance White-Light LED illuminators provide class leading performance, long life, energy efficiency and ultra low maintenance. They incorporate the very latest surface mount LED's to deliver excellent night-time pictures with improved optical output and outstanding reliability.

The unique Adaptive Illumination™ concept provides the flexibility to alter the angle of illumination on site to suit specific security needs and to match the camera's field of view. RAYLUX illuminators are also purpose designed to provide even output illumination.

Each unit is fitted with a Cool Running™ thermal management system to carefully control LED output and delivers a projected working life of 10 years.

RAYLUX illuminators are supplied with bracket and power supply. Control features on the power supply include adjustable power output, photocell and telemetry control. RAYLUX 200 is designed for low light installations up to 60m (200ft).



POWERFUL

- Distances up to 60m (200ft)
- Latest LED technology
- Ultra Wide Angle

FLEXIBLE

- Adaptive Illumination™
- Fully Controllable Power Supply

RELIABLE

- 10 year life
- Cool Running™ thermal management system

CONTROLLED

- C3 Colour Corrected White Light
- Even Output Illumination

rayTEC[®]

www.rayteccctv.com

ADAPTIVE ILLUMINATION™

Designed for RAYMAX Infra-Red and RAYLUX White-Light illuminators, Adaptive Illumination™ allows the installer to adjust the angle of the light projection from a single unit to fit the specific demands of any installation. Adjustment is quick and convenient and any angle from 120-180 degrees is easily selectable. Adaptive Illumination is patent pending technology available exclusively from Raytec.

COOL RUNNING™ Thermal Management System

Cutting edge materials science techniques have been employed to improve thermal efficiency throughout the unit. Cool Running™ is specifically designed to allow all Raytec LED products to provide exceptionally long life - up to 10 years.

SMT (Surface Mount Technology)

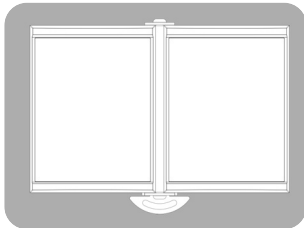
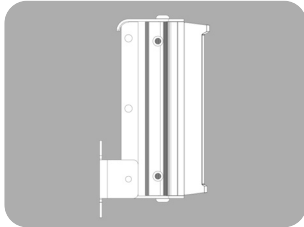
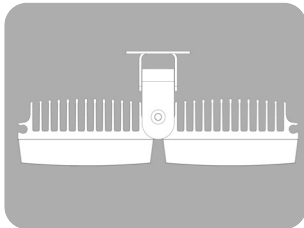
The future of lighting is surface mount LED technology. Compared to standard through hole LED's, surface mount LED's are a more robust solution increasing reliability and improving product life. They are also far more efficient at the dissipation of heat allowing the LED's to run at higher power and achieve significantly improved performance.

5 YEAR WARRANTY

All Raytec CCTV illuminators are provided with a 5 year warranty, unmatched anywhere in the CCTV lighting industry. Raytec illuminators provide guaranteed long life!



TECHNICAL SPECIFICATIONS



ILLUMINATOR

Max Distance: up to 60m (200ft)
Angle: Various - See Part Codes
Optics: SMT LED's
Consumption: 80W max
Voltage: 14V current controlled
Weight: 4kg
Environmental: IP66
Temp Range: -20 to +40°C (0 to 105°F)
Cable Length: 2.5m
Colour: Silver
Wavelength: White-Light
Dimensions: 280 x 195 x 66mm

POWER SUPPLY

PSU Included
Input: Universal 100-240V AC auto-sensing
Output: 80W max
Temperature: -20 to +40°C (0 to 105°F)
PSU Features:
 Adjustable Photocell
 Adjustable power output for IR Telemetry Control
Other Available PSUs:
 Pulsed PSU with camera sync
 Premium PSU (includes camera power and photocell following contact)

BRACKETRY

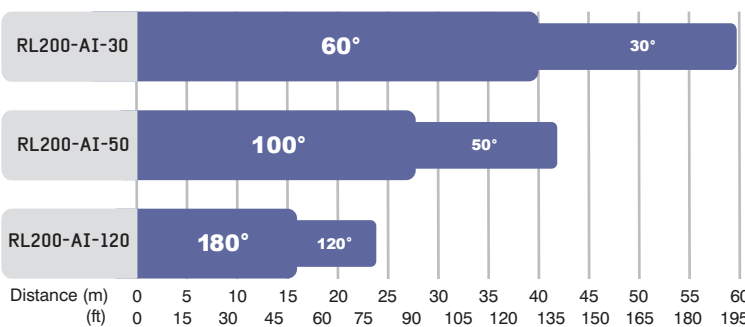
U Bracket and Adaptive Illumination bracket included

PART CODES

RL200-AI-30 RAYLUX 200, 30-60°, White-Light + PSU
 RL200-AI-50 RAYLUX 200, 50-100°, White-Light + PSU
 RL200-AI-120 RAYLUX 200, 120-180°, White-Light + PSU

Other models available on request.

RAYLUX 200 ILLUMINATION DISTANCES



N.B Maximum distance is dependant upon camera/lens performance.

ALL RAYLUX DISTANCES

		METRES		FEET	
		Narrow	Wide	Narrow	Wide
RAYLUX 200	RL200-AI-30	60	40	197	130
	RL200-AI-50	42	28	138	91
	RL200-AI-120	24	16	79	52
RAYLUX 100	RL100-AI-30	42	28	138	91
	RL100-AI-50	30	20	98	65
	RL100-AI-120	18	12	59	39
RAYLUX 50	RL50-AI-120	12	8	39	26
RAYLUX 25	RL25-120	8	non AI	26	