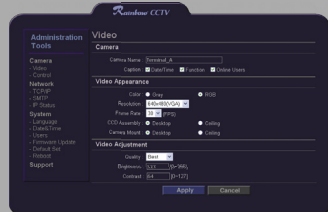


- Stable and Compact Sized 1 CH Video Web Server
- High Frame Rate with Superior Video Quality (MAX. 30fps / M-JPEG)
- Dynamic IP Support with DDNS Service
- Various Image Size Support
- Powerful PTZ Function with Various Protocol
- 1CH Loop-Through Video Output for CCTV Monitor, VCR, DVR, etc.
- Pure WEB based Monitoring Solution
- Remote System management : Configuration and Upgrade



Web based monitoring



Remote system management



| Specifications                 |              | NVS1   |
|--------------------------------|--------------|--|
| Hardware                       | CPU          | 32-Bit RISC Processor                            |
|                                | OS           | Embedded Linux                                   |
|                                | Flash Memory | 8MB  |
|                                | RAM          | 16MB   |
| Viewer                         |              | Web Browser Based Monitoring                     |
| Network                        | Protocol     | TCP/IP, HTTP, FTP, SMTP, PPP, UDP and More       |
|                                | Interface    | 10/100 base-T Ethernet (RJ-45)                   |
| Compression                    | Algorithm    | M-JPEG   |
|                                | Rate         | 1/10~1/1200                                      |
| Video                          | Input        | 1CH, NTSC/ PAL                                   |
|                                | Output       | 1CH, NTSC/ PAL                                   |
|                                | Size         | 640X480, 320X240, 160X120                        |
|                                | Frame Rate   | 30 frame/sec (320x240) / 15 frame/sec (640x480)  |
| Pan/Tilt Control               |              | RS-485   |
| Power                          |              | 12VDC / 500mA (use regulated power supply only)  |
| Dimensions (including bracket) |              | 3.9" x 1.1" x 3.9" / 98mm x 27mm x 100mm (w/h/d) |
| Weight                         |              | Approx. 2.3 oz. / 150g                           |
| Operating Temperature          |              | 32°F~104°F (0°C ~ 40 °C)                         |