

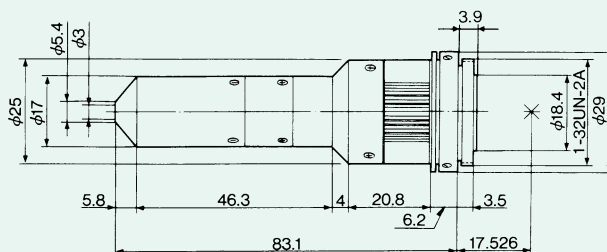
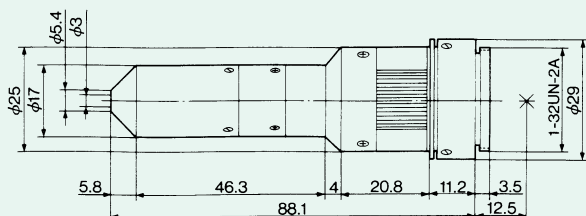
1/2 Format Manual Iris Pinhole

■ HS620P(C60613)

CS-MOUNT
Unit:mm

■ H620P(C60612)

C-MOUNT
Unit:mm



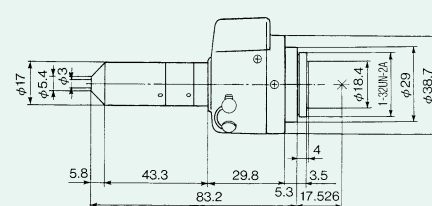
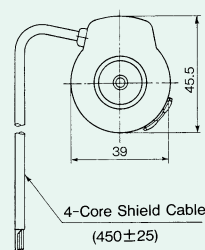
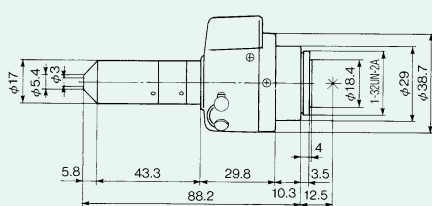
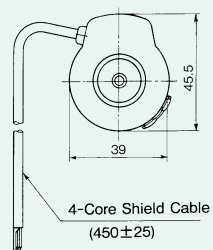
1/2 Format Auto-Iris Pinhole

■ HS620PE(C60627)

CS-MOUNT
Unit:mm

■ H620PE(C60626)

C-MOUNT
Unit:mm



■ Specifications		HS620P	H620P	HS620PE	H620PE
Focal Length		6.2mm	6.2mm	6.2mm	6.2mm
Max. Aperture Ratio		1:2.0	1:2.0	1:2.0	1:2.0
Iris Range		F2.0~Close	F2.0~Close	F2.0~300	F2.0~300
Operation Method	Iris	Manual	Manual	Auto	Auto
	Focus	Fixed	Fixed	Fixed	Fixed
	Zoom	—	—	—	—
1/4 Format Angle of View	Horizontal	32.44	32.44	32.44	32.44
	Vertical	24.46	24.46	24.46	24.46
1/3 Format Angle of View	Horizontal	42.82	42.82	42.82	42.82
	Vertical	32.44	32.44	32.44	32.44
1/2 Format Angle of View	Horizontal	56.12	56.12	56.12	56.12
	Vertical	42.82	42.82	42.82	42.82
Min. Object Distance		0.3m	0.3m	0.3m	0.3m
Back Focal Length		14.23mm	14.23mm	14.23mm	14.23mm
Flange Back Length		12.5mm	17.526mm	12.5mm	17.526mm
Filter Screw Size		—	—	—	—
Temperature Range		-20°C~+50°C	-20°C~+50°C	-20°C~+50°C	-20°C~+50°C
Dimensions		φ29×88.1mm	φ29×83.1mm	39×45.5×88.2mm	39×45.5×83.2mm
Weight		67g	63g	105g	100g
Remarks				Video & DC Iris	Video & DC Iris