



# WM3026 Mount

## WALL MOUNT, EXTRA HEAVY DUTY, PAN/TILT AND ENCLOSURE

### Product Features

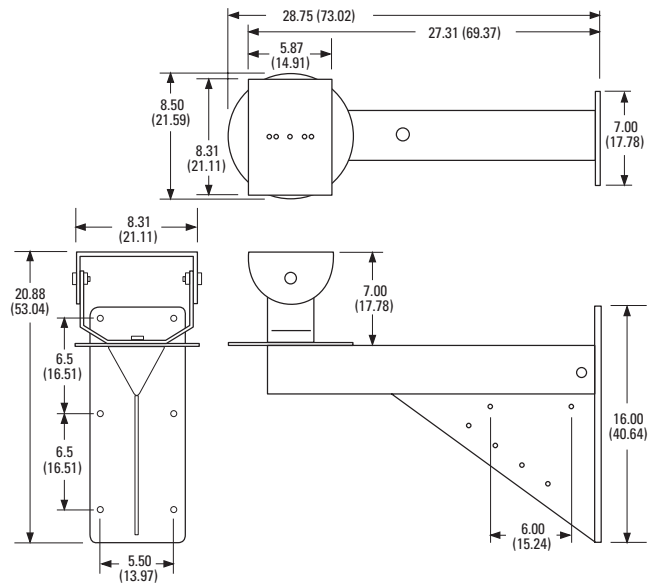
- Aluminum Construction
- Maximum Load 300 Pounds (136.08 kg)
- For Use with Heavy Duty Pan/Tilts and Enclosures
- Built-in Gusset Provides Added Support and Ample Space for Mounting an External Receiver
- Two 3/4-Inch NPT Threaded Holes on Side of Mount Arm Accommodate Flexible Metal Conduit Connectors
- Adjustable Head Easily Removed for Use with Heavy Duty Pan/Tilt – No Special Adapters Required



The **WM3026** wall mount has been designed specifically for use with Pelco's heavy duty pan/tilts and/or enclosures. Manufactured from 0.25-inch (6.35 mm) aluminum, the **WM3026** is capable of supporting a maximum load of 300 pounds (136.08 kg) and can be safely mounted to any vertical load-bearing surface.

The **WM3026** includes an adjustable mounting head, built-in pan/tilt adapter and gusset for added support. This flexible design allows you to simply remove the adjustable head for heavy duty pan/tilt applications – no special mounting adapters are required. In addition, the gusset can be utilized for mounting a standard receiver in close proximity to the camera, enclosure, and/or pan/tilt.

In addition, the two 3/4-inch NPT threaded holes on the sides of the mount arm will accommodate flexible metal conduit in applications where cabling must be installed externally to the mounting surface.



NOTE: VALUES IN PARENTHESES ARE CENTIMETERS; ALL OTHERS ARE INCHES.



DataFAX  
SPEC: 2258  
MANUAL: 22586

C258 / REVISED 11-98



# TECHNICAL SPECIFICATIONS

## MODEL

WM3026 Extra heavy duty wall mount for use with pan/tilts and/or enclosures

## MECHANICAL

Pan Adjustment 360°  
Tilt Adjustment ±90°  
Cable Entry One cable entry hole on top of mount arm; two 3/4-inch NPT threaded holes (one on each side) for conduit. Cable may also enter the mounting arm directly through cutout on mounting plate. Three hole plugs provided to cover unused holes.

Suggested Mounting Method Secure to wall with six 3/8-inch diameter fasteners of suitable size (not supplied)

## GENERAL

Maximum Load 300 lb (136.08 kg)  
Construction 0.25-inch (6.35 mm) aluminum  
Finish Gray polyester powder coat  
Environment Indoor/outdoor  
Unit Weight 15.6 lb (7.1 kg)  
Shipping Weight 23 lb (10.42 kg)

## COMPATIBLE RECEIVERS

The following standard receivers (indoor or outdoor models) can be mounted to the WM3026:

CX9024RX Series  
CX9115RX Series  
CX9220RX Series  
CX9224RX Series  
ERD97P21-U



**Pelco Worldwide Headquarters:**

3500 Pelco Way, Clovis, California 93612-5699 USA

**USA & Canada** Tel: (800) 289-9100 • FAX (800) 289-9150 • DataFAX (800) 289-9108

**International** Tel: (559) 292-1981 • FAX (559) 348-1120 • DataFAX (559) 292-0435

[www.pelco.com](http://www.pelco.com)

Specifications subject to change without notice.  
©Copyright 1998, Pelco. All rights reserved.