



HS4012 Enclosure

HIGH SECURITY, INDOOR, CEILING/WALL/PEDESTAL MOUNT

Product Features

- Indoor Applications
- Removable Camera Sled
- Two Conduit Knock-Out Holes for Cable Entry
- Tamper-Proof Fasteners
- Steel Construction (16-Gauge)
- Hinged Side Panels Allow Easy Access to Camera and Lens
- Wall, Ceiling, or Pedestal Mounting

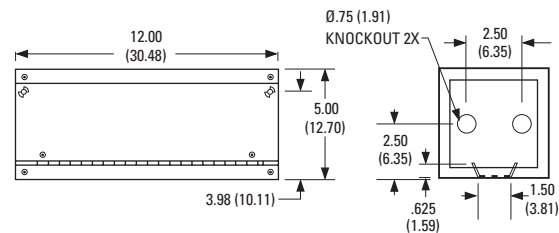
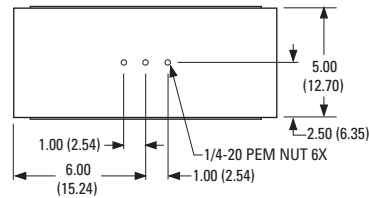


The **HS4012** is a high security enclosure designed to provide a high degree of protection against vandalism in such applications as correctional facilities, bus stations, schools, or other indoor applications.

Constructed of steel, this enclosure will accommodate camera and lens combinations up to 4.50" H x 4.50" W x 10.375" L (11.43 x 11.43 x 26.33 cm) and features an optically clear 0.25-inch (6.35 mm) thick impact-resistant Lexan® window.

The hinged side panels allow easy access to the camera and lens for servicing. Tamper-proof fasteners secure the side panels, thereby restricting access to unauthorized personnel.

Mounting holes in the top and bottom allow the enclosure to be used with a variety of mounts.



NOTE: VALUES IN PARENTHESES ARE CENTIMETERS; ALL OTHERS ARE INCHES.



DataFAX
SPEC: 2488
MANUAL: 24886

C488 / REVISED 10-02



International Organization
for Standardization;
Registered ISO 9001



TECHNICAL SPECIFICATIONS

MODEL

HS4012 High security indoor camera enclosure

MECHANICAL

Camera Mounting	Multiple holes on adjustable camera sled
Maximum Camera and Lens Size	Accepts camera and lens combinations* (including BNC connector) up to: 4.50" H x 4.50" W x 10.375" L (11.43 x 11.43 x 26.33 cm)
Viewing Window Area	4.00" H x 4.00" W (10.16 x 10.16 cm)
Cable Entry	Two 0.75-inch (1.91 cm) knock-out holes on rear of enclosure
Security	Two tamper-resistant screws on each access door (hollow Allen wrench supplied)

*Assumes lens is fully extended.

GENERAL

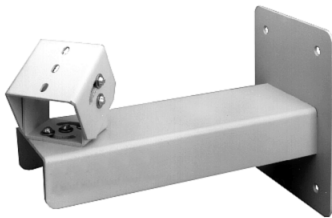
Front Window	0.25-inch (6.35 mm) thick Lexan®
Construction	0.059-inch (1.49 mm) thick, 16-gauge steel
Finish	Gray polyester powder coat
Environment	Indoor; 32° to 120°F (0° to 49°C)
Weight	6.5 lb (2.95 kg)
Shipping Weight	8 lb (3.62 kg)

CERTIFICATIONS/RATINGS

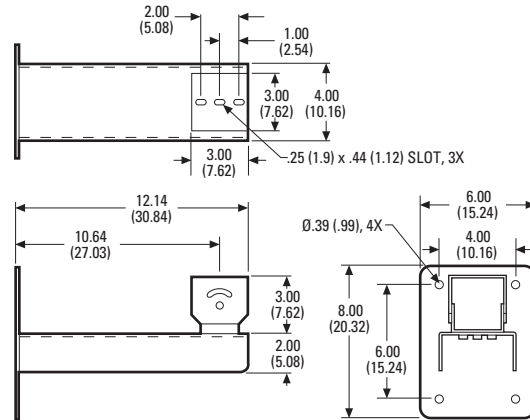
- UL Listed
- Meets NEMA Type 1 standards

RECOMMENDED MOUNTS

Ceiling/ Pedestal	EM1009U,	Medium duty ceiling/pedestal mount;
	EM1015U	maximum load 40 lb (18.14 kg)
	MM22	Medium duty ceiling/pedestal mount;
Wall	EM1400	maximum load 40 lb (18.14 kg)
	EM1900U	Light duty wall mount; maximum load
	EM22	20 lb (9.07 kg)
	EM2400	Medium duty wall mount; maximum
	HSWM12	load 40 lb (18.14 kg)
		Medium duty high security wall mount
Pipe/Pole	EM1109	with tamper proof hardware; maximum
		load 40 lb (18.14 kg)
	EM2000	Medium duty pedestal mount for
	EM2200	horizontal or vertical pipe/pole
	applications; maximum load 40 lb	
	(18.14 kg)	Medium duty mount for vertical pipe/
		pole applications; maximum load 40 lb
		(18.14 kg)
		Medium duty mount for horizontal pipe/
		pole applications; maximum load 40 lb
		(18.14 kg)



HSWM12 WALL MOUNT



NOTE: VALUES IN PARENTHESES ARE CENTIMETERS;
ALL OTHERS ARE INCHES.



Pelco Worldwide Headquarters:
3500 Pelco Way, Clovis, California 93612-5699 USA
USA & Canada Tel: (800) 289-9100 • FAX (800) 289-9150 • DataFAX (800) 289-9108
International Tel: (559) 292-1981 • FAX (559) 348-1120 • DataFAX (559) 292-0435
www.pelco.com

Lexan® is a registered trademark of the General Electric Company.
Specifications subject to change without notice.
©Copyright 2002, Pelco. All rights reserved.