



## PRODUCT SPECIFICATION

# EM1109/EM2000/EM2200 Mount PIPE/POLE MOUNT, MEDIUM DUTY, ENCLOSURE

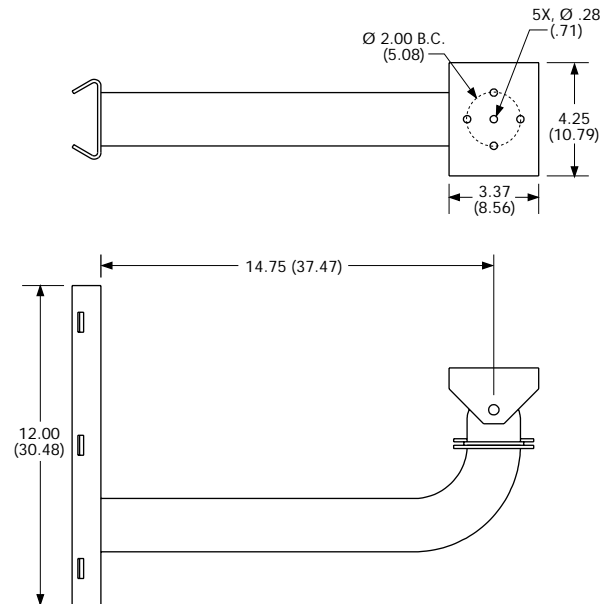
### Product Features

- Low Cost
- Manually Adjustable Swivel Head
- Cable Feedthrough Hole
- Supports up to 40 Pounds (18 kg)
- Mounts on Vertical or Horizontal Pipe/Pole (see model description); Mounting Straps Included
- Compatible with Most Pelco Enclosures Having a 2-Inch (5.08 cm) Mounting Pole Pattern

The **EM1109/EM2000/EM2200** are medium duty enclosure mounts designed for applications where mounting on a pipe or pole is necessary. These mounts can be used with Pelco enclosures having a 2-inch (5.08 cm) mounting hole pattern and are capable of supporting up to 40 pounds (18 kg). All three mounts feature a manually adjustable swivel head and a cable feedthrough hole to conceal wiring. Multiple mounting holes on the tilt table provide maximum 360 degree horizontal positioning of the enclosure.

The **EM1109** is a pedestal mount for use on a horizontal or vertical pipe or pole. The **EM2000** is a "J" type mount for use on a vertical pipe or pole, and the **EM2200** is a "hook" type mount for use on a horizontal pipe or pole. The **EM1109/EM2000/EM2200** must be mounted on pipes or poles having a minimum 3-inch (7.62 cm) diameter. Mounts are secured to the pipe or pole with stainless steel mounting straps. The straps are 28.5 inches (72.39 cm) in length. Two 1/4-20 mounting bolts required to secure the enclosure to the mount are also supplied.

The **EM1109/EM2000/EM2200** are constructed of aluminum and have a white epoxy powder coat finish.



NOTE: VALUES IN PARENTHESES ARE CENTIMETERS; ALL OTHERS ARE IN INCHES.

EM2000 DIMENSION DRAWING

International Standards Organization Registered Firm ISO 9001 Quality System

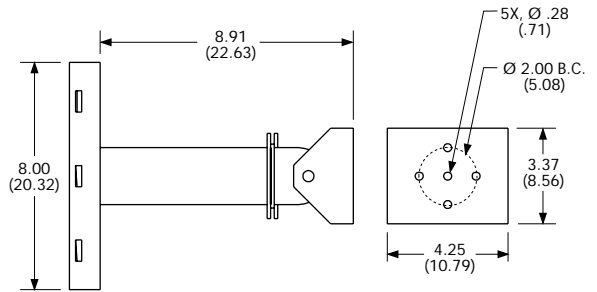




# TECHNICAL SPECIFICATIONS

## MODELS

- EM1109 Medium duty pedestal mount for horizontal or vertical pipe or pole applications. Manually adjustable swivel head and cable feedthrough hole.
- EM2000 Medium duty 90 degree "J" mount for vertical pipe or pole applications. Manually adjustable swivel head and cable feedthrough hole.
- EM2200 Medium duty "hook" mount for horizontal pipe or pole applications. Manually adjustable swivel head and cable feedthrough hole.



NOTE: VALUES IN PARENTHESES ARE CENTIMETERS; ALL OTHERS ARE IN INCHES.

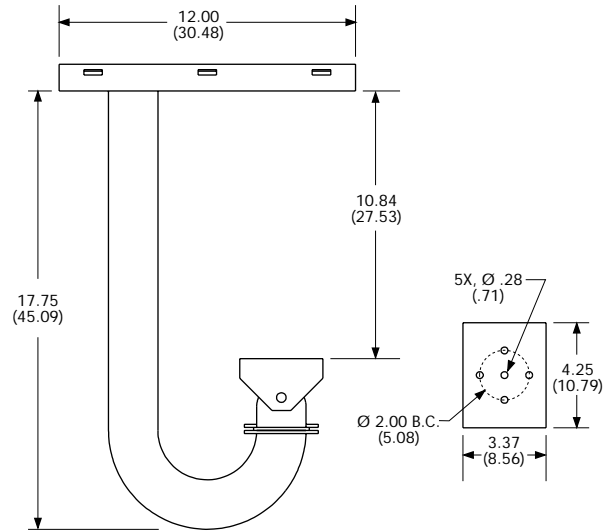
EM1109 DIMENSION DRAWING

## MECHANICAL

- Pan Adjustment Unlimited 360°
- Tilt Adjustment ±75°
- Locking Method 3/8-16 hex head bolts (on manually adjustable swivel head)

## GENERAL

- Suggested Mounting Method Slots provided for mounting straps; three stainless steel straps supplied. Strap length 28.5 inches (72.39 cm)
- Enclosure Mounting Two 1/4-20 mounting bolts (supplied)
- Maximum Load 40 lb (18 kg)
- Construction Aluminum
- Finish White epoxy polyester powder coat
- Environment Indoor/outdoor
- Unit Weight
  - EM1109 1.88 lb (0.85 kg)
  - EM2000 3.05 lb (1.38 kg)
  - EM2200 3.51 lb (1.59 kg)
- Shipping Weight
  - EM1109 3 lb (1.36 kg)
  - EM2000 8 lb (3.6 kg)
  - EM2200 9 lb (4.1 kg)



NOTE: VALUES IN PARENTHESES ARE CENTIMETERS; ALL OTHERS ARE IN INCHES.

EM2200 DIMENSION DRAWING

## RECOMMENDED ENCLOSURES

Pelco enclosures having a 2-inch (5.08 cm) mounting hole pattern can be used with these mounts. Be sure the enclosure/camera/lens combination you select does not exceed 40 pounds (18 kg) and is suitable for the type of mount you have selected. The following lists most applicable enclosures.

- EH3010/EH3014 Series (see C404 spec)
- EH4010 EH4014/EH4018 Series (see C413 spec)
- EH3508 Series Environmental (see C1435 spec)
- EH3512/EH3515 Series Environmental (see C478 spec)
- EH4700 Series Environmental (see C1405 spec)
- EH4700DB Series Environmental (see C1446 spec)
- E700 Series Dust-Tight (see C415 spec)
- EHX4E Explosion-Proof (see C417 spec)
- EH8100 Series Pressurized (see C410 spec)
- HS4012 High Security (see C488 spec)

■ Indicates change or addition since last revision.