



DX8000 Series Digital Video Recorder

8/16 CAMERA INPUTS, 80 GB-1 TB STORAGE, ADVANCED SEARCH CAPABILITIES

PRODUCT FEATURES

- Up to 720 x 480 Recording Resolution
- Up to 480 Images Per Second (IPS) Recording Rate at 320 x 240 Resolution (NTSC)
- Up to 400 Images Per Second (IPS) Recording Rate at 352 x 288 Resolution (PAL)
- Up to 16 Camera Inputs and Outputs with Auto Termination
- Maximum Internal Storage Capacity of 1 TB
- Multiple Displays for Live Viewing or Playback While Recording
- Continuous, Motion Detection, Alarm, and Scheduled Recording
- Ability to Connect Multiple DX8000s Together
- Ability to Support Five Simultaneous Clients
- Network Bandwidth Throttling
- Digital Zoom on Playback
- Pre-Motion and Pre-Alarm Recording
- On-Screen PTZ Control with Positioning Device Programming Capability
- Up to 16 Channels of Audio Recording (Optional)
- Includes Remote PC, Web, and Handheld Client Software
- Proprietary Compression Technology Offering High-Quality and Small File Sizes
- Security and Lockdown Protection Based on NIST and Microsoft® Standards



(MONITOR IS NOT SUPPLIED)

The **DX8000 Series** Digital Video Recorder (DVR) represents the next generation of high-performance, PC-based digital video recorders. It is designed for those users who demand an easy-to-operate, yet innovative DVR. The **DX8000** features built-in video motion detection, alarm-based recording, and relay output controls. Models range from an eight-channel, single 80 GB HDD unit to a sixteen-channel unit with up to 1 TB of storage.

Fully implemented networking capabilities allow remote administration, playback, and export using the included PC client application. Live viewing is supported on a variety of client platforms, including Internet browsers and Pocket PC-compatible handheld devices.

Versatile high-speed search operations include time and date, event list, thumbnail, and intelligent pixel searching. Extensive scheduling features allow customizing of weekday, weekend, and special event recording.

The **DX8000** offers users a highly intuitive and ergonomically designed interface that provides simple and efficient access to all setup and operations functions. Manual backup can be performed using a number of optical, magnetic, and mapped network drive options.

Overall, the **DX8000** combines a feature-rich security platform with a flexible and intuitive user interface offering an unprecedented level of functionality.



DataFAX
SPEC: 2623
MANUAL: Not Available through DataFAX

C623 / REVISED 4-04



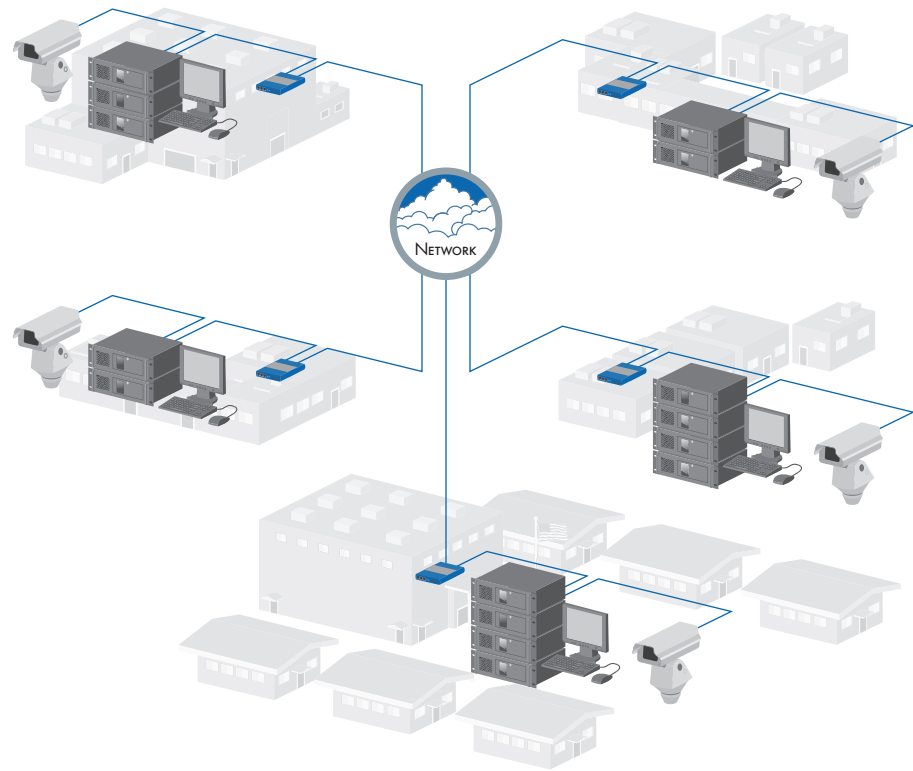
International Organization
for Standardization,
Registered ISO 9001



TECHNICAL SPECIFICATIONS

APPLICATIONS

- Connect to multiple sites simultaneously
- Supports up to five active server-to-server connections
- View live, playback, and search video
- Display 1, 4, 9, or 16 cameras simultaneously
- Control and configure sites remotely



ADDITIONAL FEATURES

- Local and Remote Administration
- Local and Remote Live, Search, and Playback Viewing
- Individual Camera Channel Configuration
- Display of Cameras from Different Sites on One Screen
- Dynamically Adjustable Frame Rate and Image Quality for Motion and Alarm Recording
- Dynamically Adjustable Frame Rate and Image Quality for Pre-Motion and Pre-Alarm Recording
- Pre-Alarm Recording up to 60 Seconds (up to 15 Minutes with Optional 256 MB RAM Upgrade)*
- Monitor System Changes Using Activity Logs
- User-Friendly and Highly Intuitive Graphical User Interface
- Local and Remote Software Upgrade Capabilities
- Multilevel Password and User Configuration
- Automatic Image Watermarking
- Multilanguage Support (English, German, French, Italian, Portuguese, and Spanish)
- User-Definable PTZ Presets, Patterns, and Preset Tours
- Display up to 16 Local and Remote Cameras on a Single Screen
- Print Still Images from Video
- Export Video and Still Images in Multiple Formats, Including DX8000 Native, AVI, ASF, BMP, TIFF, and JPEG
- API Facilitates Development and Integration of Third-Party Applications
- Ability to Configure Any Number of Camera Channels for Covert Mode

SECURITY

The DX8000 incorporates a number of vigorous security measures, recognized by the National Institute of Standards and Technology (NIST) and Microsoft®, to ensure system integrity and to safeguard data.

AUDIO RECORDING

The DX8000 supports audio recording capabilities with the installation of the DX8000-AUD audio expansion option. The DX8000 accepts up to 16 individual monaural audio inputs. Each input is designed to receive an unbalanced, line-level audio signal with voltages between -1 V and +1 V into an impedance of 1 k Ω or more.

* Pre-alarm estimate is based on a 16-channel DVR with a recording resolution of 320 x 240 (CIF) and a frame rate of four 3 KB images per second.
Note: Image sizes can vary greatly depending on application.

TECHNICAL SPECIFICATIONS

TECHNICAL SPECIFICATIONS

Electrical/Video

Input Voltage	100-240 VAC, 50/60 Hz, auto-ranging**	
Signal System	NTSC/PAL	
Operating System	Windows® 2000 and Service Pack 4	
Recording Resolutions	NTSC	PAL
	320 x 240	352 x 288
	640 x 240	704 x 288
	640 x 480	704 x 576
	720 x 240	720 x 288
	720 x 480	720 x 576

Compression	Pelco proprietary	
Video Inputs	8/16 (looping with automatic termination)	
VGA Outputs	1	
S-Video Output	1	
Analog		
Video Outputs (Optional)	2	
Alarm Input Terminals	8/16 (user selectable, N.O./N.C.)	
Relay Output Terminals	8/16 (user selectable, N.O./N.C.)	
Remote Administration	Full remote control via TCP/IP network	
Total Recording Rate	Up to 480 images per second	

Mechanical

Connectors	
BNC	Video inputs and outputs
6-pin mini-DIN	PS/2 mouse and keyboard
DB9	COM 1 and COM 2 (disabled)
DB15	Monitor port (SVGA) and audio input(s)
RJ-45	Ethernet port (100 BaseT) and RS-485/RS-422 ports
S-Video (from VGA card)	Analog monitor output (disabled)
USB	Six high-speed USB 2.0 ports (2 front, 4 rear)
Miniature	
Male Phone Plug	Audio Output

General

Environmental																																		
Operating Temperature	50° to 95°F (10° to 35°C)																																	
Relative Humidity	Maximum 80%, non-condensing																																	
Dimensions																																		
Desktop	7.0 (H) x 17 (W) x 19.9 (D) inches (17.78 x 43.18 x 50.55 cm)																																	
Rack Mount	7.0 (H) x 19.0 (W) x 22 (D) inches (4 RUs) (17.78 x 48.26 x 55.88 cm)																																	
Unit Weight (Approximate)	<table><thead><tr><th></th><th>Unit</th><th>Shipping</th></tr></thead><tbody><tr><td>DX8008-080</td><td>39.1 lb (17.8 kg)</td><td>60 lb (27 kg)</td></tr><tr><td>DX8008-250</td><td>39.1 lb (17.8 kg)</td><td>60 lb (27 kg)</td></tr><tr><td>DX8008-500</td><td>40.5 lb (18.4 kg)</td><td>61 lb (28 kg)</td></tr><tr><td>DX8008-750</td><td>41.9 lb (19.0 kg)</td><td>63 lb (29 kg)</td></tr><tr><td>DX8008-1000</td><td>43.2 lb (19.6 kg)</td><td>64 lb (29 kg)</td></tr><tr><td>DX8016-080</td><td>39.7 lb (18.0 kg)</td><td>61 lb (28 kg)</td></tr><tr><td>DX8016-250</td><td>39.7 lb (18.0 kg)</td><td>61 lb (28 kg)</td></tr><tr><td>DX8016-500</td><td>41.1 lb (18.6 kg)</td><td>62 lb (28 kg)</td></tr><tr><td>DX8016-750</td><td>42.5 lb (19.3 kg)</td><td>64 lb (29 kg)</td></tr><tr><td>DX8016-1000</td><td>43.8 lb (19.9 kg)</td><td>65 lb (29 kg)</td></tr></tbody></table>		Unit	Shipping	DX8008-080	39.1 lb (17.8 kg)	60 lb (27 kg)	DX8008-250	39.1 lb (17.8 kg)	60 lb (27 kg)	DX8008-500	40.5 lb (18.4 kg)	61 lb (28 kg)	DX8008-750	41.9 lb (19.0 kg)	63 lb (29 kg)	DX8008-1000	43.2 lb (19.6 kg)	64 lb (29 kg)	DX8016-080	39.7 lb (18.0 kg)	61 lb (28 kg)	DX8016-250	39.7 lb (18.0 kg)	61 lb (28 kg)	DX8016-500	41.1 lb (18.6 kg)	62 lb (28 kg)	DX8016-750	42.5 lb (19.3 kg)	64 lb (29 kg)	DX8016-1000	43.8 lb (19.9 kg)	65 lb (29 kg)
	Unit	Shipping																																
DX8008-080	39.1 lb (17.8 kg)	60 lb (27 kg)																																
DX8008-250	39.1 lb (17.8 kg)	60 lb (27 kg)																																
DX8008-500	40.5 lb (18.4 kg)	61 lb (28 kg)																																
DX8008-750	41.9 lb (19.0 kg)	63 lb (29 kg)																																
DX8008-1000	43.2 lb (19.6 kg)	64 lb (29 kg)																																
DX8016-080	39.7 lb (18.0 kg)	61 lb (28 kg)																																
DX8016-250	39.7 lb (18.0 kg)	61 lb (28 kg)																																
DX8016-500	41.1 lb (18.6 kg)	62 lb (28 kg)																																
DX8016-750	42.5 lb (19.3 kg)	64 lb (29 kg)																																
DX8016-1000	43.8 lb (19.9 kg)	65 lb (29 kg)																																

CERTIFICATIONS

- CE
- UL Listed
- UL Listed to Canadian Safety Standards
- FCC, Class B (Class A if audio option is installed)

At the time of this printing, other certifications are pending. Please consult the factory, our website (www.pelco.com), or the most recent B.O.S.S.® update for the current status of certifications.

REMOTE PC CLIENT APPLICATION

Recommended PC Requirements

Processor	Intel® Pentium® III, Pentium 4 with 800 MHz minimum processor speed
Memory	128 MB RAM
Video	AGP VGA card with minimum 64 MB video RAM (nonshared memory), 1024 x 768 display resolution, and DirectX® 8.1 application programming interface.
Monitor	SVGA or XGA with 1024 x 768 resolution
Operating system	Windows 2000 (SP4) or Windows XP Professional DirectX 8.1 or better Microsoft Internet Explorer 5.5 or later 500 MB free disk space
Mobile PDA Client Application	A Pocket PC with Microsoft PPC 2002 or higher, Intel XScale® CPU with minimum 400 MHz processor speed, and minimum 64 MB of memory

** It is recommended that an Uninterruptible Power Supply (UPS) device be used with the DX8000 with a 700 VA or better rating.

TECHNICAL SPECIFICATIONS

MODELS

Model Number	No. of Camera Inputs	Total HDD Space (GB)	Optical Drive
DX8008-080	8	80	CD-RW
DX8008-250	8	250	CD-RW
DX8008-500	8	500	CD-RW
DX8008-750	8	750	CD-RW
DX8008-1000	8	1000	CD-RW
DX8016-080	16	80	CD-RW
DX8016-250	16	250	CD-RW
DX8016-500	16	500	CD-RW
DX8016-750	16	750	CD-RW
DX8016-1000	16	1000	CD-RW
DX8008-080DVD	8	80	DVD-RW
DX8008-250DVD	8	250	DVD-RW
DX8008-500DVD	8	500	DVD-RW
DX8008-750DVD	8	750	DVD-RW
DX8008-1000DVD	8	1000	DVD-RW
DX8016-080DVD	16	80	DVD-RW
DX8016-250DVD	16	250	DVD-RW
DX8016-500DVD	16	500	DVD-RW
DX8016-750DVD	16	750	DVD-RW
DX8016-1000DVD	16	1000	DVD-RW

Supplied Accessories

Power cords (USA and European), keyboard, PS/2 mouse, DX8000 recovery CD, remote client application CD, audio input breakout cables (optional), alarm and relay terminal blocks, and rack mounting kit. (Monitor is not supplied with DX8000 Series DVR.)

Optional Accessories

DX8000-ISCI	DX8000 Internal Ultra 160 SCSI card
DX8000-MUX8	DX8000 8-channel multiplexed analog output display card
DX8000-MUX16	DX8000 16-channel multiplexed analog output display card
DX8000-AUD	DX8000 8-channel audio input card
DX8000-EXD	DX8000 IDE Extension PCI card
DX8000-256RAM	DX8000 Memory upgrade from 256 MB to 512 MB



Pelco Worldwide Headquarters:

3500 Pelco Way, Clovis, California 93612-5699 USA

USA & Canada Tel: (800) 289-9100 • FAX (800) 289-9150 • DataFAX (800) 289-9108

International Tel: (559) 292-1981 • FAX (559) 348-1120 • DataFAX (559) 292-0435

www.pelco.com

B.O.S.S.® is a registered trademark of Pelco.
 Microsoft®, Windows®, and DirectX® are registered trademarks of Microsoft Corporation.
 Intel XScale,® and Pentium® are registered trademarks of Intel Corporation.
 Specifications subject to change without notice.
 ©Copyright 2004, Pelco. All rights reserved.