

Low Voltage 5.6" Colour LCD Monitor

- Dual Video channels
- Advanced LED Backlight Technology
- On Screen Display
- IR Remote Control Handset
- 140°H x 80°V Viewing Angle
- 2-channel Audio function
- 4-way Mirror function
- Channel Switching trigger function*
- Universal Mounting Bracket
- Dedicated Power Supply

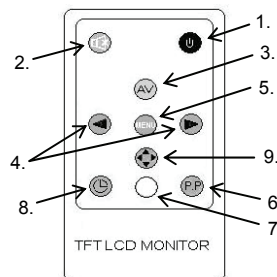


Display	5.6" Colour TFT LCD
Power	12V DC ±10%/ 200mA
Operating Temp.	0 °C ~ +60 °C
Housing	Internal Use only

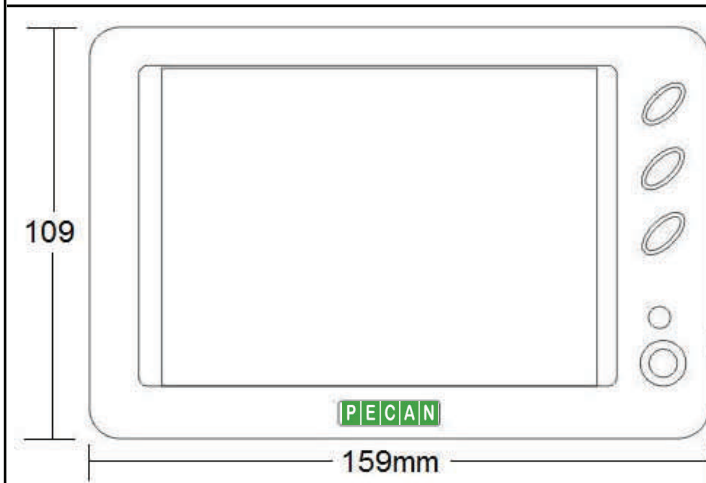
1. Press "**POWER**" button to turn unit ON / OFF
2. Press "**MUTE**" button to mute audio. Press again to restore audio function.
3. Press "**AV**" button to switch between VIDEO Channel 1 and VIDEO Channel 2.
4. Press "**ARROW**" buttons to adjust volume
5. Press "**MENU**" button to choose Brightness, Colour, Contrast, Tint (NTSC system only) and Volume then adjust their values using "**ARROW**" buttons
6. Press "**PP**" key on Remote Handset, to select preferred Picture: "**Standard-Soft-Vivid-Light-Memory**"
7. **MODE** button is not in use
8. "**SLEEP**" timer control appears as following table: **SLEEP OFF>15>30>45>60>75>90>105>120>OFF**
9. Press "**MIRROR**" button for adjusting picture orientation

Please note:- Some menu text is not visible without a video signal input

** To change channel, ground the channel switch trigger wire - (6) below.
eg. To view a reversing camera when reverse gear is selected*

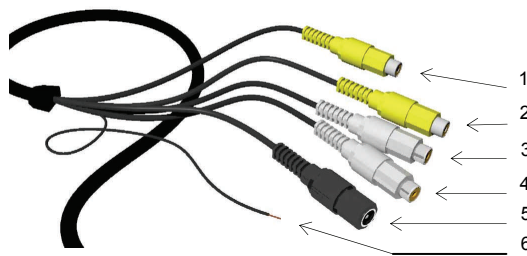


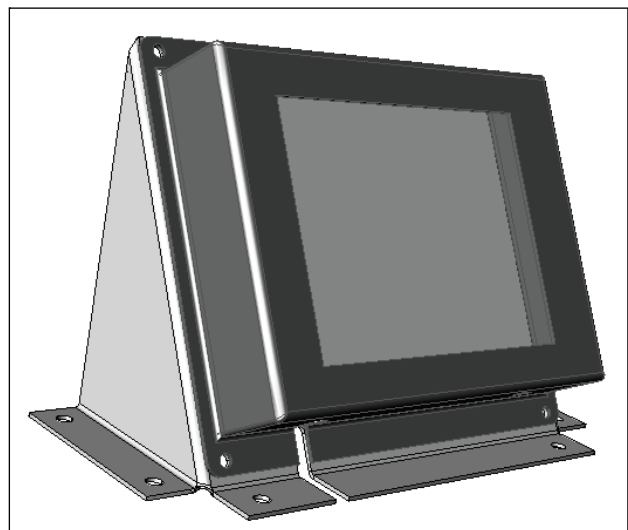
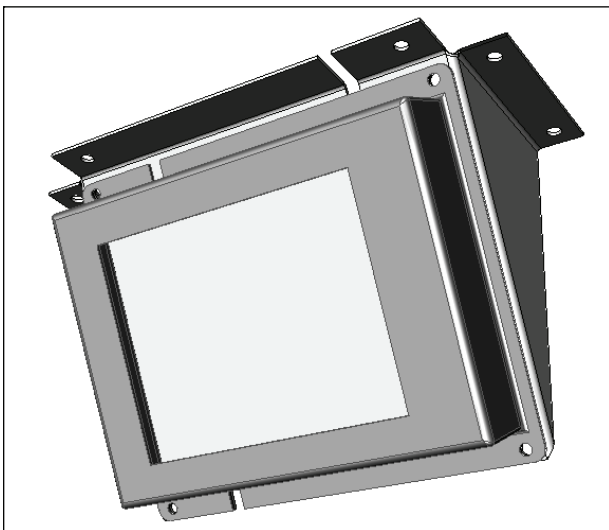
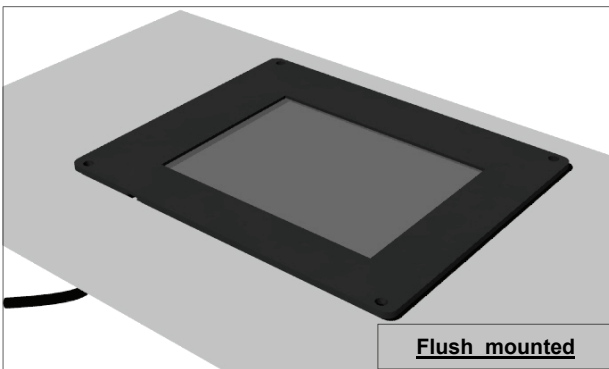
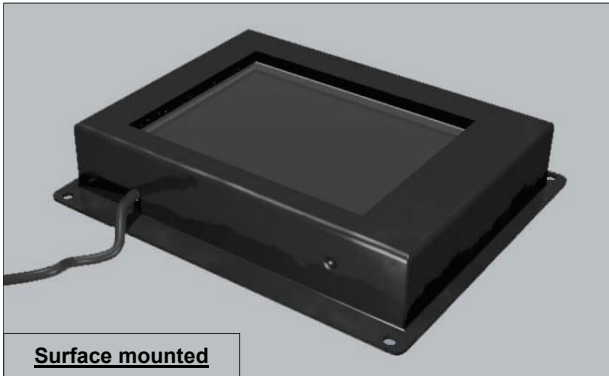
Style	Mode	Channels	Resolution	Audio	Case	Power consumption	ORDER CODE
5.6" LCD	Colour TFT	Twin	320 x 234 VGA	2 channels	ABS	200mA	LCD564
This monitor is supplied with an IR remote control handset, a 12vDC PSU and a universal mounting bracket							



850mm flying lead

1. Yellow phono socket: -Video input 1
2. Yellow phono socket: -Video input 2
3. White phono socket: -Audio input 1
4. White phono socket: -Audio input 2
5. Black DC jack: -12VDC in (centre +)
6. Channel switch trigger wire





Fitted to optional angled bracket—LCD564AB

