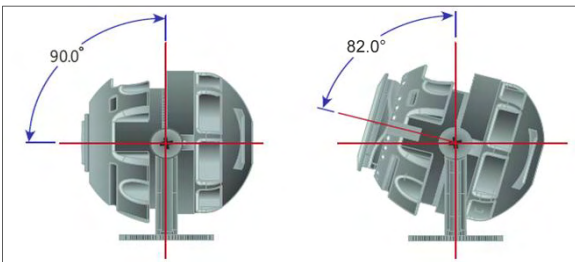


D108-HD-SDI Series 1080p Internal Dome Camera

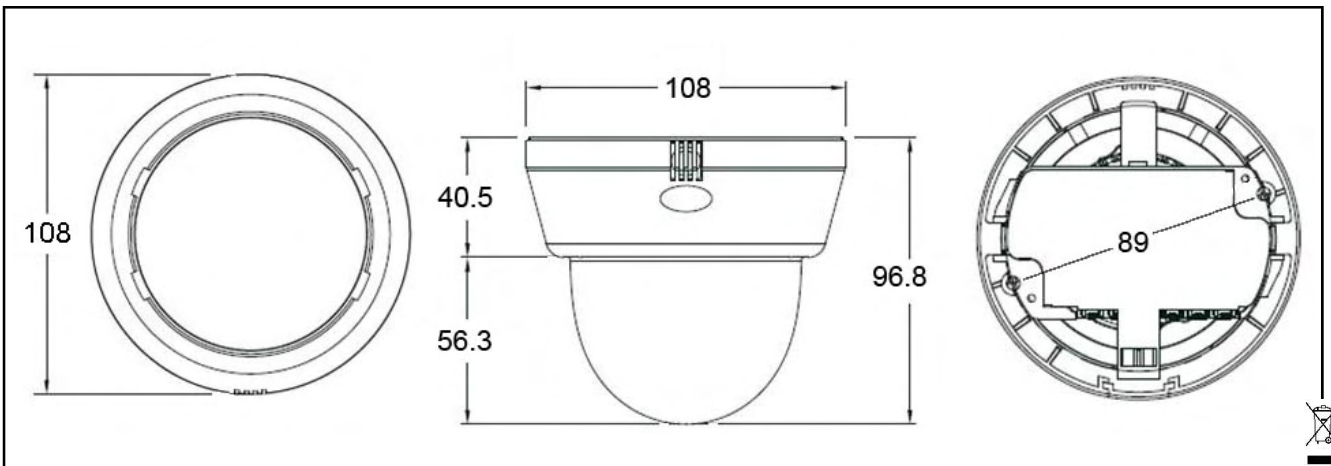
- Sony® 1/3" CMOS Sensor
- 2.0 Megapixel (1080p) High Definition
- 3.5-16mm F1.2 Auto-Focus Lens
- Analogue 2nd Video output
- OSD (On-Screen Display) controls
- Wide DC Voltage tolerance (10~16vDC)
- Dual Voltage (12vDC/24vAC)
- 850nm Infrared Lighting to 20m (option)*
- True Day Night function (w/LED option)
- Maximum Dynamic Range
- RS-485 Port
- 3-Axis Camera adjustment
- Simple 2-screw surface mounting system



* For critical viewing applications additional lighting may be required

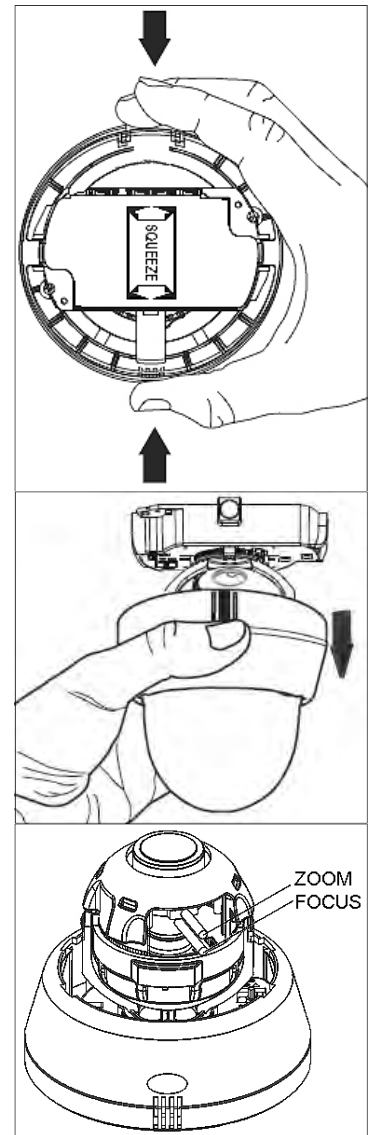


Mode	Sensor	Resolution Col/B&W	Sensitivity	Power	Features	ORDER CODE
Col/B&W	1/3" CMOS	1920x1080 pixels 25fps	0.5/0.01 0.0lux (LEDs on)	Max 2.2W	User cable connector	D108-HD-SDI
TDN					IR LED range to 20m	D108LT-HD-SDI
HDMI-VIDEO Adaptor available for use in standard analogue co-ax installations						



Specifications

Model	D108-HD-SDI	D108LT-HD-SDI
Pick-up Device	1/3" 2.0 Megapixel CMOS	
Mode	Col/Mono	True Day/Night
Total pixels	2016(H) x 1108(V)	
Resolution	1920 x 1080 pixels (Colour) 25 fps	
	1920 x 1080 pixels (TDN/B&W) 25 fps	
Frame Rate	25 fps (PAL)	
Sync system	Internal	
S/N Ratio	>50dB (AGC off)	
Electronic Shutter speed	1/25s [PAL]	
Lens	3.5~16mm F1.2, Auto-Focus*	
Min. illumination	0.5 lux (F1.6, 30 IRE) Col-our	0.01 lux (F1.6, 30IRE) TDN/ B&W 0.0 lux (IR on)
IRLED	N/a	20pcs Ø3mm IR to 20m (Intelligent camera sync.)
SDI output	Main Monitor	HD-SDI 1080P
	Sub Monitor	Composite Video
HD-SDI Transmission	Cable length: max. 100M (75Ω RG6 recommended)	
Operating temp.	-10°C ~ +55°C	
Storage temp.	-20°C ~ +70°C	
RS-485	Built-in	
MAX-DR	Off/On 0~15	
Gain	Low/Mid/High	
Privacy	Off/On (28-zones)	
Motion	Off/On	
Alarm	1 x External trigger input	
Mirror	Vertical and Horizontal Flip	
Digital Zoom	0~112	
Voltage	12vDC/24vAC ±10%	
Power	Max 2.2W	



*Auto-Focus Lens

Due to the sensitivity of a MegaPixel lens, it can be hard to gain sharp focus definition.

With the **PECAN** Auto-Focus Lens Series, this is just one click and a few seconds away.

Watch the lens functioning and monitor progress on the time bar throughout the AF process.