



CCD-WBOX Wall Box with discrete camera.

- > Wall mount
- > Smoked lens

CCD-WBOX/E, CCD-WBOX,
CCD-WBOX/HR
COL-WBOX/E, COL-WBOX,
COL-WBOX/HR
/A Audio function available as option



CCD-SSP Stainless Steel Plate for flush mounting.

- > Ceiling or wall flush mounting.
- > Tamper resistant fixings.

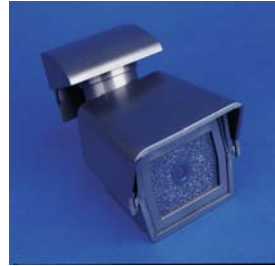
CCD-SSP/E, CCD-SSP
COL-SSP/E, COL-SSP



CCD-CASE Passive Infra-red Detector case with covert camera.

- > Monochrome, Colour, audio and high resolution version available
- > Smoked lens
- > Adjustable bracket included

CCD-CASE/E, CCD-CASE,
CCD-CASE/HR
COL-CASE/E, COL-CASE,
COL-CASE/HR
/A Audio function available as option



CCD-EXT Interior or Exterior camera.

- > Weatherproof (IP65)
- > Sunshield
- > Adjustable ball joint bracket included

CCD-EXT/E, CCD-EXT, CCD-EXT/HR
COL-EXT/E, COL-EXT, COL-EXT/HR
/A Audio function available as option



CCD-CT Ceiling tile housing with covert camera.

- > Flush mount
- > Lexan Glass camera protection

CCD-CT/E, CCD-CT, CCD-CT/HR
COL-CT/E, COL-CT, COL-CT/HR
/A Audio function available as option

Lenses

F= (mm)	Approx. Diagonal
2.9mm	120°
3.6mm	90°
6.0mm	54°
8.0mm	40°
12.0mm	26°

Fixed focus units have 3.6mm lens as standard. Alternatives can be specified.

Vari-focal Lens 4-8mm (80° -40°)

Economy /E, Standard and High Resolution /HR variations on most models.

Camera Models	Economy	Standard	Hi-Resolution
	/E		/HR
Interline Transfer CCD	1/4" - Mono	1/3" - Mono	1/3" - Mono
Horizontal Resolution	380 TVL	380 TVL	570 TVL
Light Sensitivity	0.2 Lux	0.2 Lux	0.12 Lux
Signal to Noise Ratio	>45 dB	>45 dB	>45 dB
Iris / Exposure	Electronic	Electronic	Electronic
Lens housing	CPLT	SKL	CPLT
Spectral Response	380-1000 nm	380-1000 nm	380-1000 nm
Power (12V DC)	85mA; 1.0W	100mA 1.2W	100mA 1.2W

Economy	Standard	Hi-Resolution
	/E	/HR
1/4" - Col	1/3" - Col	1/3" - Col
330 TVL	330 TVL	450 TVL
4 Lux	2 Lux	1 Lux
>45 dB	>46 dB	>46 dB
Electronic	Electronic	Electronic
CPLT	CPLT	CPLT
380-660 nm	380-660 nm	380-660 nm
100mA 1.2W	140mA 1.6W	160mA 1.95W

Signal	Composite Video into 75 Ohm	Operating Temperature	-10 to +55 °C
Gamma Correction	0.45	Storage Temperature	-20 to +70 °C
Auto Exposure	Electronic (1/50-1/80,000 sec)	Air Humidity	Maximum 85%

The Camera kits require a regulated 12 Volt DC supply.

Audio option available on Standard Mono, Standard Colour and Colour Economy models.

Whilst every effort has been made to ensure the accuracy of the information provided, no liability can be undertaken for any errors or omissions. All dimensions stated in this document are approximate. Stortech Electronics Ltd reserves the right to alter the specifications and introduce improvements without prior notice.

Stortech Electronics Ltd.
Harlow,
Essex.
Great Britain

Telephone 01279 419913
www.stortech.co.uk

STORTECH
ELECTRONICS LTD
PECAN is the CCTV division of
Stortech Electronics Ltd