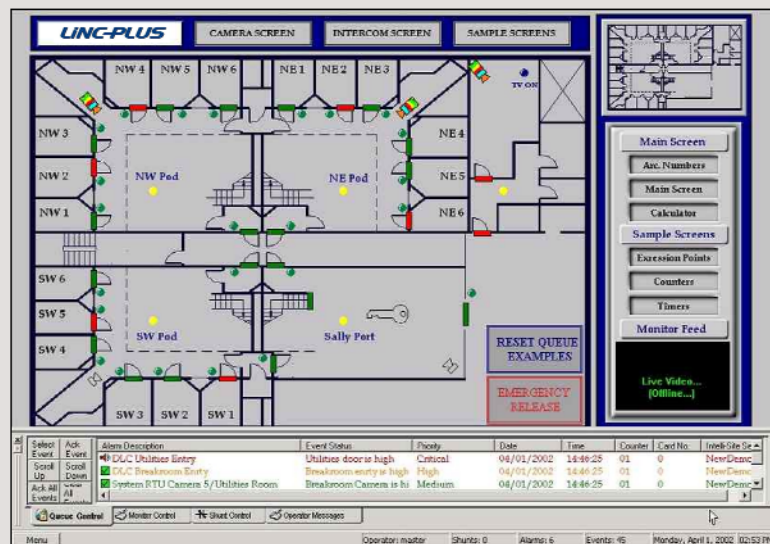


PCSC



LiNC-PLUS™ software is a complete line of scalable PC-based systems designed to integrate, control and manage electronic security components and subsystems into a networked integrated security management solution. LiNC-PLUS integrates electronic security products and subsystems from multiple manufacturers across the industry into a single, functionally enhanced, centrally controlled integrated security system.

LiNC-PLUS utilizes state-of-the-art software for the benefit of the customer, allowing them to select those products that best meet their unique requirements from the industry's offerings. LiNC-PLUS runs under Microsoft® Windows® 2000, one of the most powerful 32-bit desktop operating systems with a focus on performance, security, reliability and manageability.

LiNC-PLUS utilizes a user-defined Graphical User Interface (GUI). This GUI is designed to provide an intuitive, flexible and easy to use integrated security management system.

SUB-SYSTEMS INTEGRATION:

- Programmable Logic Controllers (PLC)
- Closed Circuit Television Matrix Switchers
- Video Badging Systems
- Digital Video Multiplexers & Recorders
- Burglar Alarm Digital Receivers
- Intercom, Paging & Communication Systems
- Fire Alarm Systems and Panels
- Time Lapse Video Recorders
- Access Control Systems and Field Panels
- Perimeter & Fence Detection Systems
- Panic & Duress Alarm Systems
- Parking & Gate Control Systems

KEY FEATURES

- User-Defined Graphical Interface
- Text-to-Speech Annunciation Module (TSA)
- Full Graphical Drag-and-Drop Configuration
- On-Screen Live Video Display (LVD)
- User-Defined Functionality
- Card Management Module (CMS)
- ODBC Compliant Database Manager
- Video Badging Module (VBS)
- Standard and User-Defined Reports
- Ethernet LAN/WAN Compatibility
- Native Client/Server Architecture
- TCP/IP Protocol, standard
- Server Redundancy
- Digital Video Recording Module (DVR)

FEATURE OVERVIEW

LiNC-PLUS provides users with a number of features and benefits that enhance and improve the overall facility security program, some of which are listed below:

- Scalable System Capacities and Functions: LiNC-PLUS will accommodate small, medium and large single-user/multi-user system requirements. It can be easily expanded by integrating additional LiNC-PLUS software modules and security products from across the industry.
- Integration Support for Existing and Future Equipment: LiNC-PLUS is a true, open-integration software package that can incorporate previously installed and future electronic security equipment from different manufacturers into a single, fully integrated single/multi-user security enterprise system.
- User-Defined Functionality: LiNC-PLUS allows the system administrator to pre-define actions to be executed upon the occurrence of each system event. The administrator can also change previously defined actions at any time, as often as necessary.

SPECIFICATIONS & DRAWINGS

- Multiple events are processed simultaneously in a multi-tasking, multi-threaded environment.
- User-Defined Alarm and Event Processing: LiNC-PLUS allows the system administrator to customize messages, priorities, colors, action groups, audio sounds (wav files), functionality and icons associated with alarm and event conditions.
- User-Defined Graphical User Interface: LiNC-PLUS utilizes a user-defined Graphical User Interface (GUI, or MMI, HMI) that is designed and configured to meet the unique needs and skill level of each user. The LiNC-PLUS Graphical User Interface (GUI) is comprised of standard windows tool bars, directory trees, dialog boxes and graphic images. These graphic images are designed and produced utilizing industry standard graphics software packages that support the BMP, JPEG and WMF image formats.
- Industry Standard Database: LiNC-PLUS incorporates a Microsoft Access database to provide consolidated reporting and automated event processing for all system devices. The LiNC-PLUS database can be linked to external databases utilizing industry standard ODBC drivers and SQL routines to provide custom report generation and upstream/downstream data transfers to meet the unique requirements of each user. Additionally, LiNC-PLUS can be configured to support multiple user-defined databases at the same time to provide true systems integration.
- Standard & Custom Reports: LiNC-PLUS utilizes a built-in report generator to provide users with quick pre-defined reports that include data specific to security operations. Additionally, LiNC-PLUS can run, display and print user-defined reports utilizing the industry standard RPT template format.
- Enhanced Features: LiNC-PLUS allows the user to incorporate Card Management, Video Badging, on-screen Live Video Display, Text-to-Speech Annunciation, Ladder Logic Programming and Server-to-Server operations to provide the user with a powerful and intuitive integrated security management system.
- Standard Product: Since LiNC-PLUS is a standard software product, expensive and time consuming custom development is not required to define or change the unique functionality of the system.

OPTIONAL ADD-ON MODULES & CAPACITY UPGRADES

- Redundancy Module (per server)
- Client Workstation License (per remote workstation)
- Digital Video Recording Module (per 8 inputs)
- Cardholder Capacity Upgrade (per 5K records)
- Inputs/Outputs Capacity Upgrade (per 128 points)
- Readers Capacity Upgrade (per 32-reader batch)
- OPC PLC Client Module (per site license)
- OPC PLC Server Package (per site license)
- Device drivers available for many popular CCTV Matrix Switchers, Access Control Panels and more - call for information

