

**Technical Support**

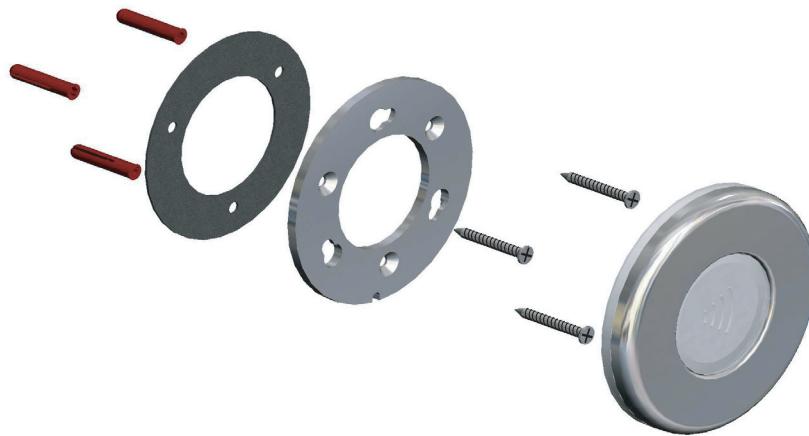
☎ 01273 811011



support@paxton.co.uk

Technical help is available: Monday - Friday from 07:00 - 19:00 (GMT)  
Saturday from 09:00 - 13:00 (GMT)

Documentation on all Paxton products can be found on our website - <http://www.paxton.co.uk/>

**Fitting**

Fix the backplate to the wall with the stainless steel screws provided in the fitting kit. The small slot in the plate edge should be positioned at the bottom.

Where the unit is to be fitted to a smooth surface, bulkhead, etc. a gasket is supplied to provide a weatherproof seal between the backplate and the mounting surface. (The unit has its own integral seal)

Locate the unit in the keyhole slots provided in the backplate. Make sure that the locking pin is close to the slot in the edge of the backplate. Rotate the unit clockwise until the locking pin engages in the slot.



To remove the unit, insert a small screwdriver into the cut out provided and use it to lift the locking pin. The unit can then be rotated anticlockwise to release it from the backplate.

## Suitability

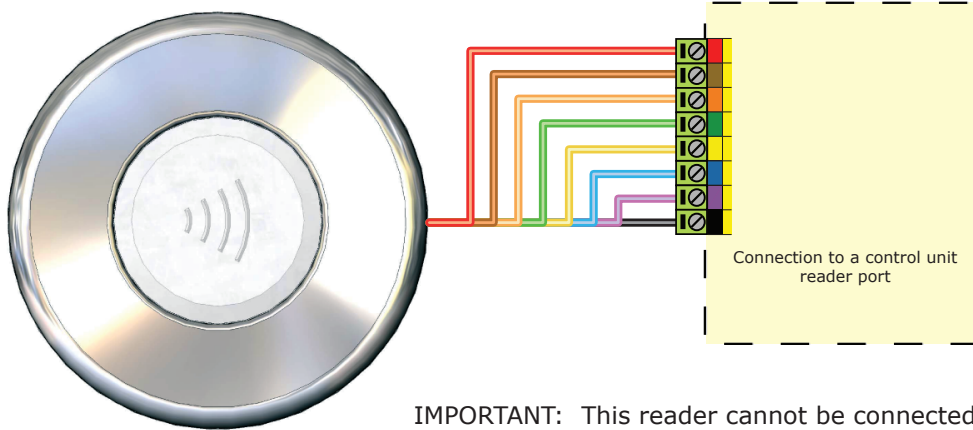
Security-sensitive doors ✓

Mounted on metal surface ✓

Wet environments ✓

Readers mounted together **300mm**  
between readers

## Wiring



**IMPORTANT:** This reader cannot be connected in parallel with other readers and keypads.

## LED indications

The marine reader has NO Amber LED indication.

Blue - Normal mode (waiting for card)  
Green flashing - Access Permitted  
Red flashing - Access Denied  
Card + PIN - Not supported

Switch 2 - Colour zoning. With only a single colour indication available, active/barred colour zones cannot be displayed. The reader retains the display selected by the previous user card. Presenting a valid card leaves the reader green, presenting a card for a disabled colour zone leaves the reader red.

## Connection modules



### Reader junction box (325-020)

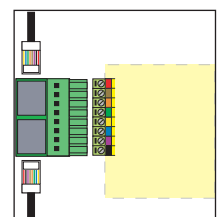
This module can be used to provide a connection point for the reader RJ45 plug. The terminals on the module are then wired colour for colour to the controller.

Alternatively, the reader can be wired directly into the screw terminals of the control unit by first cutting off the RJ45 plug and stripping back the wires in the cable.

### Reader port module (325-030)

This module may be purchased separately to speed up the installation and replacement of readers.

The reader port module is designed to convert the standard reader ports on Switch2 and Net2 controllers to accept one or two RJ45 connections. Pull off the screw terminal block from the reader port and simply replace it with this module.



Further information on how to purchase Installer Tools is available at:  
<http://paxton.info/841>

## Cable extensions

Readers can be extended using Belden CR9540 10-core overall screened cable to a maximum of 100 metres.

## Backlight dimming card

The backlight on the unit may be dimmed down or turned off if required. A dimming card is provided with this unit.

Present this card within 2 minutes of powering up the reader and the backlight (blue) will reduce in brightness. Repeated presentations will reduce the brightness in stages down to no illumination. Showing the card again will return the backlight to full power.

<b>Specifications</b>			
<b>Environment</b>	Min	Max	
Operating temperatures - all items	-35 °C	+70 °C	
Waterproof		IPX7	Outdoor Use
Cable length			5 metres
<b>Electrical</b>	Min	Max	
Voltage	8V DC	14V DC	
Current	130 mA	220 mA	
Carrier frequency			125 kHz
Clock and data bit period			600 µs
<b>Read Range</b>	Token	Keyfob	Hands Free Token
	40 mm	30 mm	400 mm
<b>Dimensions</b>	Diameter	Depth	
	106 mm	16 mm	

<b>Contents in box</b>		
PROXIMITY marine reader		
Reader backplate		
Backplate gasket		
Backlight dimming card		
Documentation		
<b>Fitting kit</b>	Qty	Description
Kit fk1-079	3	No 8 x 1.5 in pozi pan self tapping screw - zinc
	3	Wall plugs

This product is not suitable for retail sale. All warranties are invalid if this product is not installed by a competent person.

# CE0889

The declaration of conformity is available on request. Contact details are provided at: <http://paxton.info/596>