



## i-PRO management software for multi-recorder multi-site system

### Key Features: WV-ASM200/WV-ASE201

- Supports 16:9 video stream and 16:9 HD monitor. Displays 16:9 and 4:3 videos from IP cameras on the same screen.
- H.264 recording data in the SD/SDHC memory card can be downloaded.
- Convert file format from n3r (proprietary format) to MP4.
- Online management system enables easy use without dongle.
- Up to 100 recorders, 64 encoders and 256 directly connected cameras can be registered. Up to 6,400 cameras registered in the recorders and 256 cameras registered in the encoders are automatically registered in the WV-ASM200 (the number of the cameras depends on the recorder and encoder).
- Live images can be received directly from the camera/encoder or via the recorder enabling flexible network design.
- Multi-Monitor option enables simultaneous use of Operation Display (1 / 4 / 9 / 16 split), Live Display (1 / 4 / 9 / 16 split) and Map Display each on a dedicated monitor. Single or two monitor operation is also available. A total of 20 screens can be displayed with the simultaneous use of the Operation Display and the Live Display at a time.<sup>\*1</sup>
- Up to 16x 30 ips/camera images can be displayed in H.264 1.5 Mbps mode (VGA: Normal quality mode) or MPEG-4 2 Mbps mode (VGA: Normal quality mode, QVGA: High quality mode, depending on the camera and camera setup).
- Up to 400 camera groups: Cameras and multiscreen mode for the Operation Display can be programmed and called up by manual or sequence operation.
- Image resolution dynamically changes depending on the screen mode: VGA for Quad screen, QVGA for 16 split screen, enabling optimum network usage (depending on the camera model).
- Panasonic camera control: Pan/Tilt, Zoom, Focus, Brightness, Preset position call and program (up to 256), Auto mode, AUX 1 ~ 3, Click Centering, Wheel Zoom, Specified area zoom by mouse dragging (depending on the camera model)
- A camera, a group or a sequence can be called up on the Operation Display by their ID with the optional system controller WV-CU950.<sup>\*1</sup> The camera displayed in the active window can be controlled by the system controller. Recorder playback operation can also be made by the system controller with Jog/Shuttle.
- Alarm notification: A pop-up alarm message is displayed.
- Individual alarm reset is possible.
- Operation Display, Live Display, and Map Display reacts correspondingly with the alarm.
- Displays the present alarm log in red.
- When an alarm occurs, the monitor changes into the map automatically showing where the alarm happened.
- Illustrated camera, alarm and recorder icons for intuitive operations
- Up to 64 camera icons can be freely positioned on a map with alarm status indicated by the color of the icons.<sup>\*1</sup>
- Recorded images of up to 64 cameras (in case with WJ-ND400) can be downloaded by one operation. Downloaded images can be viewed by the viewer software (provided).
- Sophisticated user management: User authentication with time limited password, 5 user levels, User-Camera View/Control partitioning in conjunction with recorder's user management function, Up to 32 user registrations
- System logs can be saved in CSV format. Operation logs can automatically be erased when specified time has passed (31 / 92 / 184 / 366 days).
- Audio from a camera can be heard and the operator voice can be transmitted to the camera's audio output through the network (single channel at a time, full/half duplex depending on the camera).
- Recorded audio with the WJ-ND200 or WJ-ND400 or WJ-NV200 can be played back (single channel at a time).
- Video Analytic functions of the WJ-NT314 such as intruder detection and object abandonment/removal detection can be displayed.
- When used with WJ-ND400 series, WJ-HD716/616, WJ-NV200, VMD search can be operated.

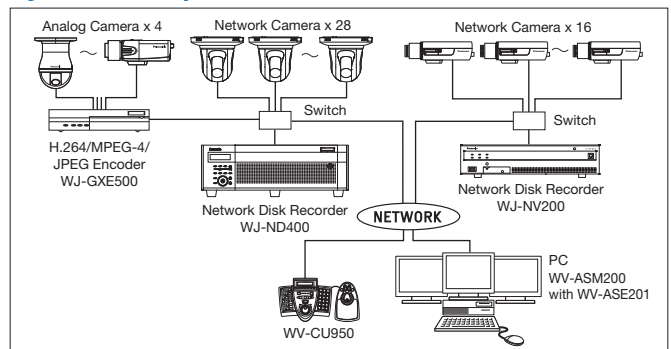
<sup>\*1</sup> WV-ASE201 is necessary.

### Optional Accessory

Ethernet System Controller with 3D-Joystick & Jog/Shuttle  
**WV-CU950**  
(WV-ASE201 is necessary.)



### System Example



## Specifications: WV-ASM200/WV-ASE201

<b>Supported Equipment</b>	Supported Cameras	Direct: Panasonic i-PRO series Network cameras except WV-NM100 Via Recorder: Panasonic i-PRO series Network cameras, BB series (specific models) and Axis® (specific models)	
	Supported Recorders	WJ-ND400 series, WJ-ND300 series, WJ-ND200 series, WJ-HD716/616, WJ-HD300A series, WJ-NV200	
	Supported Encoders	WJ-GXE500, WJ-NT304, WJ-NT314	
	Supported Controller <sup>1</sup>	WV-CU950	
	Supported Image Format	H.264, MPEG-4 (i-PRO series except WV-NM100), M-JPEG	
	Supported Image Resolution	2,048 x 1,536, 1,920 x 1,080, 1,280 x 960, 1,280 x 720, 960 x 720, 800 x 600, 640 x 480, 640 x 360, 320 x 240, 320 x 160 (depending on the source equipment)	
	Max. Recorder Registrations	100, Cameras registered in the recorders are automatically registered in WV-ASM200	
	Max. Encoder Registrations	64, Cameras registered in the encoders are automatically registered in WV-ASM200	
	Max. Camera Registrations	Camera direct: 256, Via Recorder: 6,400 (in case with WJ-ND400), 3,200 (in case with WJ-ND300), 1,600 (in case with WJ-ND200/WJ-NV200), Via Encoder: 256 (in case with WJ-GXE500, WJ-NT314/304)	
	<b>GUI Function</b>	Camera Control (depending on the Camera)	Pan/Tilt, Zoom, Focus, Brightness, Preset position call and program (up to 256), Auto mode (SEQ, SORT, AUTO PAN, PATROL, AUTO TRACK), AUX 1 ~ 3, Click centering, Wheel zoom, Drag and zoom
Recorder Control (depending on the Recorder)		REC, PLAY, Rev PLAY, Pause, Stop, FF (up to 96x), REW (up to 96x), Prev Record, Next Record, Prev Image, Next Image, Skip (up to 60 min.), Rev Skip, (up to 60 min.) Text	
Event Search		Target: Recorder (Camera) / Group / Map <sup>1</sup> , Search criteria: Time date, Event type, Text	
VMD Search		In case with WJ-ND400 series, WJ-HD716/616, WJ-NV200	
Multiscreen Mode		Spot / Quad (A-D) / 9 split / 16 split	
Sequence Display		10 programs, 64 steps/pattern, Spot / Quad / 9 split / 16 split Dwell time: 3s / 5s / 10s / 15s / 20s / 25s / 30s / 35s / 40s / 45s / 50s / 55s / 1min	
Display Performance		30 ips x 16 screens at H.264 1.5 Mbps, 30 ips x 16 screens at MPEG-4 2 Mbps	
Multi-Monitor <sup>1</sup>		Up to 3 monitors (Operation / Live / Map), Up to 20 cameras can be displayed (Operation-4, Live-16)	
Camera Group Display		Up to 400 groups with 16 alphanumeric titles	
Number of Maps <sup>1</sup>		Up to 100 maps (JPEG or Bit map), Link: 64 cameras and 20 maps / map	
Image Download		Recorded images of up to 64 cameras (in case with WJ-ND400) can be downloaded. Manual download only. Viewer software can be extracted from the main software.	
SD memory Download		Indicates the function featured in some Panasonic's cameras that transfers H.264 video files (mp4 files) saved on the SD memory card equipped with the camera to a PC using the FTP function.	
Recorder/Camera Access		The access to the Recorder and Camera Web pages when logged in as admin	
File Conversion		Convert a n3r file to the standard format (mp4)	
Camera Title Display		On the GUI, Up to 16 characters	
Clock Display		On the GUI, Time: 12H/24H, Date: 5 formats (When the image comes from the recorder)	
Alarm Source		Panasonic alarm protocol	
Alarm Control		Reset, Auto reset (OFF / 10s / 20s / 30s / 1min / 5min)	
Alarm Action		Up to 16 alarm images can be displayed on the live monitor. Corresponding camera icon on the map lights up. Alarm message on the GUI and buzzer.	
Digital Zoom		Up to 4 times	
Text Attachment		Free comment can be attached for each record and reviewed at later time. Up to 200 characters	
System Log		Operation (100,000), System (1,000), Network error (1,000), Recorder error (1,000), Alarm (30,000)	
Recorder Log Download		Operator access, Network error, Error, Event	
User Management		Registration: Up to 32 users + Administrator, ID: 4-14 digit, PW: 4-8 digit, User level: 5 levels (Programmable), PW time limit: OFF / 31 / 92 / 184 / 366 days, Auto login: ON / OFF, Login user: Up to 16 users	
Security Method		User authentication (ID and Password), Host authentication (IP address), Alteration detection, Activation Key Card	
System Setup		Setup page in English, French, Italian, Spanish, German, Russian, Chinese, Japanese	
GUI Language		English, French, Italian, Spanish, German, Russian, Chinese, Japanese	
<b>General</b>		Supported OS <sup>2</sup>	Microsoft® Windows Vista® Business SP2 32bit/64bit, Microsoft® Windows® 7 Professional SP1 32bit/64bit The language of the OS must be same as selected GUI language.
		Required PC	CPU: Intel® Core™ i5-2400, 2500, Intel® Core™ i7-860 or faster RAM: 3 GB or more, VRAM: 512 MB or more (256 MB min.), Microsoft® DirectX® 9.0c or later Web Browser: Internet Explorer® 7.0 or later (depends on a connected device)
<b>Network</b>		Proxy	HTTP proxy supported (IP address and port No.)
	FTP	Passive/Active	
<b>Viewer Software</b>	Playback Control	Play, Rev Play, Pause, FF, REW, Prev Record, Next Record, Prev Image, Next Image	
	Additional Functions	Alteration detection, Save as JPEG, Two times zoom, Print	

<sup>1</sup> WV-ASE201 is necessary.

<sup>2</sup> Microsoft® Windows® XP not supported

### Trademarks and registered trademarks

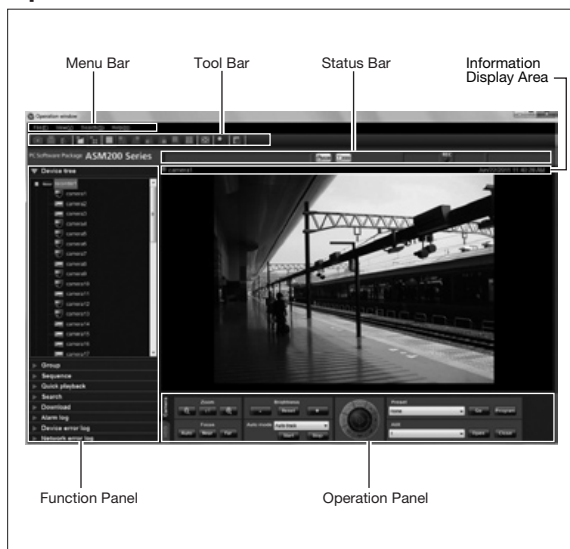
- Microsoft, and Windows are registered trademarks of Microsoft Corporation in the U.S. and other countries.
- Axis is a registered trademark of Axis Communications AB.
- Intel and Pentium are registered trademarks of Intel Corporation.
- "Super Dynamic", "SDI", "SDIII", "SD5", "SD5Link", "i-PRO" and "i-PRO SmartHD" logos are trademarks or registered trademarks of Panasonic Corporation.

### Important

- Panasonic recommends a dedicated PC to prevent installation errors and to keep best performance.
- Safety Precaution: carefully read the operating instructions and installation manual before using this product.
- Panasonic can not be responsible for network performance and/or other manufacturer products that reside on the network.
- When remote monitoring, please pay attention to the network design. For details, please contact your local Panasonic sales representatives.

## DISTRIBUTED BY:

## Operation Window



## Software Comparison Chart

Functions	WV-ASM200+WV-ASE201 Management Software	WV-ASM200 Management Software - Basic	
<b>Main Functions / Description</b>	Live / Playback / Control		
<b>Supported Devices</b>	Camera	Direct	i-PRO series <sup>3</sup>
		Via Recorder	i-PRO series <sup>3</sup> , Axis <sup>4</sup> , BB series <sup>4</sup>
	Recorder	NVR	WJ-ND400 series, WJ-ND300 series, WJ-ND200 series, WJ-NV200 series
		DVR	WJ-HD716/616, WJ-HD300A series
	Encoder		WJ-GXE500, WJ-NT314, WJ-NT304
<b>Max. Devices</b>	Controller		WV-CU950
	Camera	Direct	256
		Via Recorder	6,400 (with WJ-ND400 series) 3,200 (with WJ-ND300 series) 1,600 (with WJ-ND200 series/WJ-NV200 series)
		Via Encoder	256 (with WJ-GXE500, WJ-NT314/304)
	Recorder		100
	Encoder		64
	Controller		1
<b>AVMD Display (Frame and Tracking Line)</b>	Yes	Yes	
<b>Multiple Monitors Supported</b>	Yes (Up to 3 monitors: Operation / Live / Map)	No	
<b>Map Function</b>	Yes	No	
<b>Audio</b>	Yes (Live: 2-way, Playback: 1-way)		
<b>Event Search (T&amp;D, Event type etc.)</b>	Yes		
<b>VMD Search</b>	Yes (with WJ-ND400 series, WJ-HD716/616, WJ-NV200)		
<b>Image Download</b>	Yes		

<sup>3</sup> Except WV-NM100

<sup>4</sup> Specific Models only. Also, JPEG only is supported and camera control is not supported.

- All TV pictures are simulated.
- Masses and dimensions are approximate.
- Specifications are subject to change without notice.
- These products may be subject to export control regulations.
- All product pictures are NTSC models.

# Panasonic®

<http://panasonic.net/security/>

Printed in Japan (2A-081L)