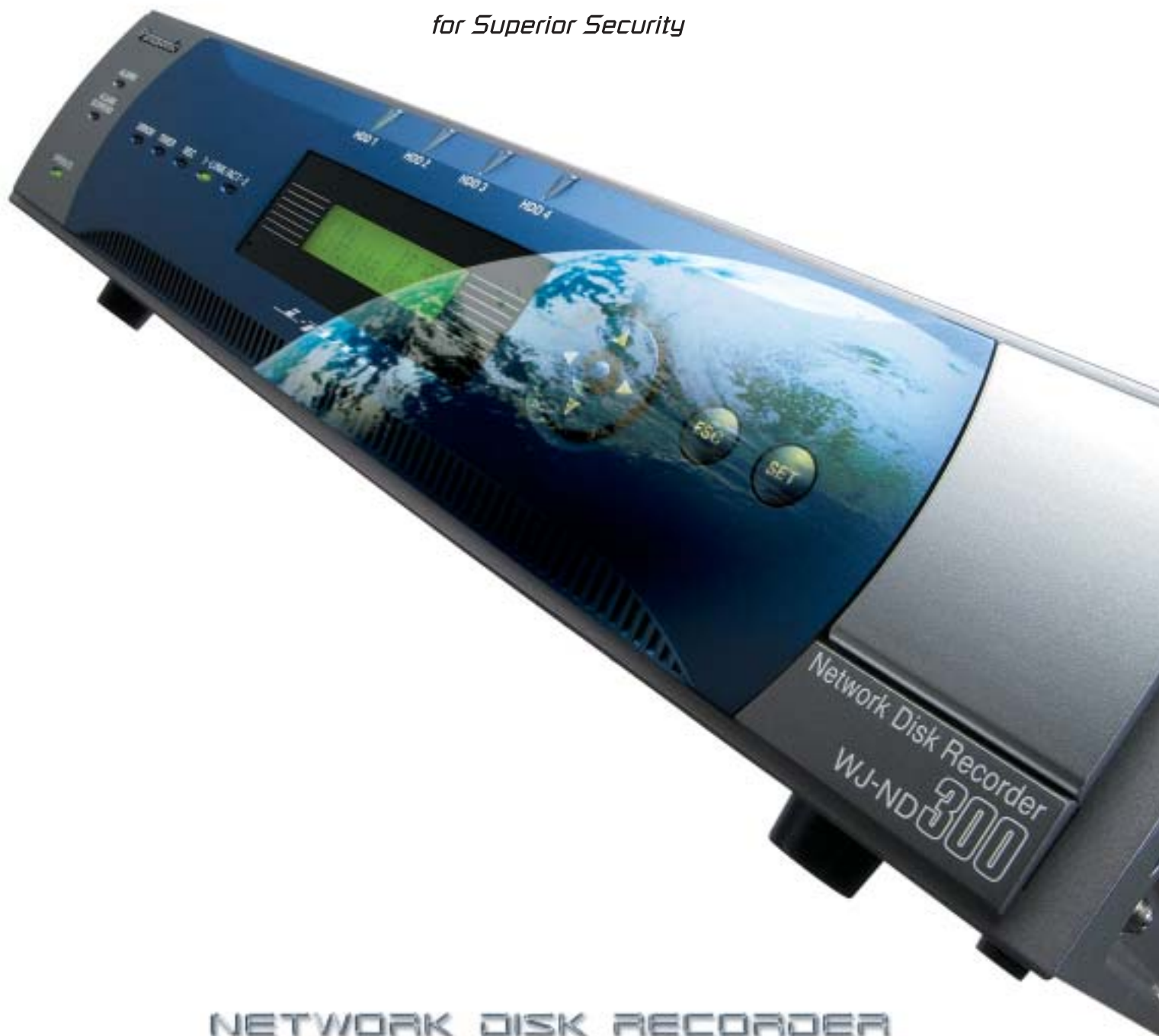


Panasonic
ideas for life

Network Disk Recorder
WJ-ND300

*The Network Recording Solution
for Superior Security*



NETWORK DISK RECORDER
WJ-ND300

i-PANA

Professional Surveillance

High Image Quality

Purpose of Measurement	Number of Camera	Data Stream from One Camera	Recording ips	Number of Clients
Maximum data stream and recording ips at maximum camera number	32	3 ips	3 ips	Two (2) Browser at 2 QUADs or One (1) WV-AS65 at 16 Screens
Maximum recording ips at practical number of camera connected	16	10 ips	5 ips	Two (2) Browser at 2 QUADs or One (1) WV-AS65 at 16 Screens
Maximum number of camera to provide maximum number of recording ips	10	10 ips	10 ips	Two (2) Browser at 2 QUADs or One (1) WV-AS65 at 16 Screens JPEG image compression

High Capacity Storage

The WJ-ND300 comes standard with 250GB of storage capacity. And can be configured with 3 additional hard disk drives for 1TB of storage. Additionally, with optional WJ-HDE300 Extension Units, a system can have up to 7TB of storage.

More Efficient Use of Image Storage Capacity

The Rate Control feature for MPEG-4* permits storage of only Intra Frame data. Data Stream Control for JPEG reduces only recording frame rate.

*Firmware upgrade available in 1st Quarter 2006 to support MPEG-4.

A Wealth of Advanced Surveillance Features

To increase surveillance efficiency the WJ-ND300 recorder provides a full array of Schedule, Event, Emergency, and External Timer recording features, multiple parameter filters that provide accelerated search, and supports E-mail notification via FTP.

High-level User Management

The WJ-ND300 allows for registration of up to 32 users with individual user ID and password. Operations and access to cameras and functions can be restricted for each user. For additional security, the host authorization function blocks access and operation from unregistered IP addresses.

Benefits of Combining Highly Reliable Surveillance and IP Network

Flexibility

Use of an IP Network allows camera placement anywhere along the network. It also permits live monitoring, search, playback and recording from a computer.

Scalability

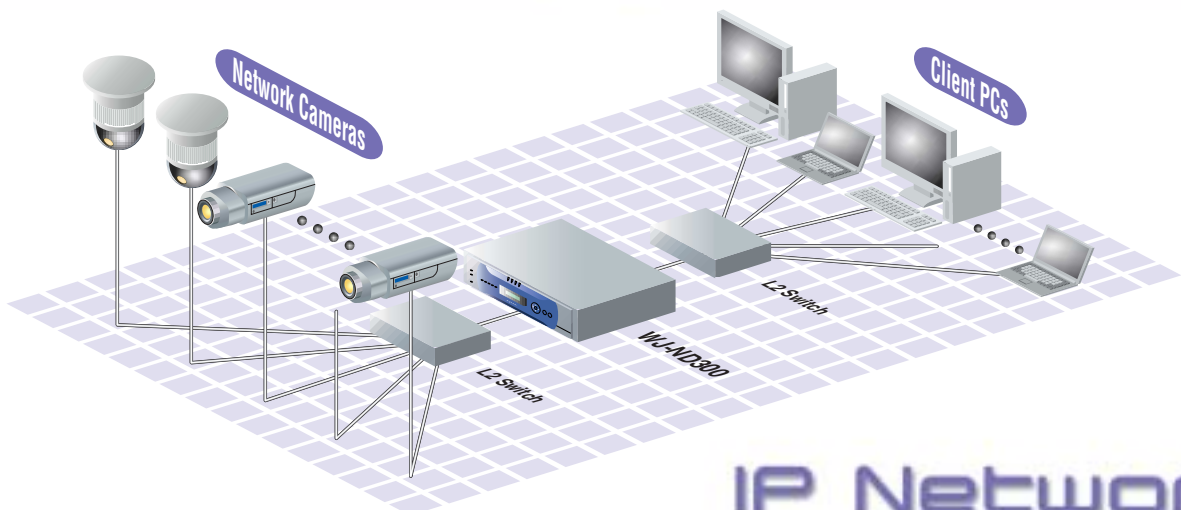
Use of an IP Network also reduces the number of steps required to add cameras and connect them to a hub. With our optional WV-AS65 Management PC Software, systems can incorporate up to 100 WJ-ND300 Network Disk Recorders and up to 3,200 cameras.

Cost Efficiency

Because the WJ-ND300 utilizes an existing network infrastructure, it sharply reduces costs in both time and money compared to systems that require dedicated cabling. The use of ordinary PCs eliminates the need for dedicated monitors. Plus, with hard disk storage, the burden of replacing video tapes or other consumables is also reduced.

Built with the Future in Mind

As digital networks become a pervasive component of contemporary life, the potential for networked video surveillance systems is enormous. The WJ-ND300 is designed to take full advantage of new networking advances and to simplify the integration of other surveillance applications (i.e. access control systems).



IP Network

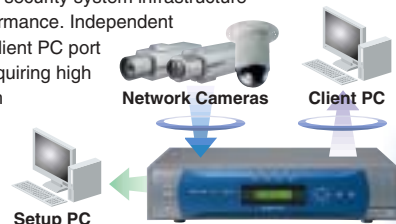
The Disk Recorder for MPEG-4*/JPEG Network Cameras

Panasonic introduces the new WJ-ND300 Network Disk Recorder with support for up to 32 Ethernet-linked network cameras. This multifunction disk recorder offers combining high image quality with the high frame rate. Plus, it gives you the full, IP-addressing capabilities required to maximize both flexibility and scalability. The possibilities are endless. From systems that exploit existing networks to high-performance systems using dedicated networks, even hybrid systems using analogue cameras, the WJ-ND300 meets security needs across a wide range of applications.

*Firmware upgrade available in 1st Quarter 2006 to support MPEG-4.

High Image Quality

The WJ-ND300 is the latest innovation in Panasonic's commitment to your company's security system infrastructure and network performance. Independent camera port and client PC port for applications requiring high image quality, high frame rate and multi-channel capabilities.



RAID5 Built-In

The Optional RAID5 Board; WJ-NDB301 enables high-level risk management by adding RAID5 capability to the WJ-ND300 itself.



System Integration with WJ-HD300A Series

Optional Management PC Software WV-AS65 permits simultaneous use of up to 100 WJ-ND300 and WJ-HD300A Series Digital Disk Recorders. By making it easy to construct hybrid systems incorporating existing analogue equipment, it brings a new level of flexibility to surveillance and security management.



Management PC Software: WV-AS65

Setup Couldn't Be Simpler

WJ-ND300 is equipped with a built-in Auto IP Setup feature that automatically assigns IP addresses to Panasonic's WV Series network cameras linked to the network. With no need to manually set each camera's IP address, getting your system up and running is easy.

MPEG-4*/JPEG Compatible

This disk recorder can be used with either MPEG-4* or JPEG cameras or in systems combining both. This flexibility allows systems to be tailored precisely to user needs using various combinations of cameras.

*Firmware upgrade available in 1st Quarter 2006 to support MPEG-4.

Usability is the key to a great interface

With your choice of eight languages (English, French, German, Italian, Spanish, Russian, Chinese, Japanese) and simultaneous access to each WJ-ND300 from up to eight clients.

Instinctive Operation

How simple is simple? Recorder and camera operations are just a click of a mouse away.

Control Tab

Quick access to rich array of search parameters for images stored in the WJ-ND300. Allows you to list logs in many different ways to facilitate searches for detailed information.

Filtered Search

Use Time & Date, REC Events, Camera, or Text parameters to filter data.



Camera images can be displayed single screen or four-screen as the sequence.



Camera Select Tab

To see a live image, simply click on the camera of your choice. Tree-type displays make it easy to organize cameras by floor or in other ways.

On four-window screens, click on this button to enlarge the active window.



Main Screen Playback

HDD Tab

Simply click with the mouse to playback images stored in the WJ-ND300. Speed up playback up to 96 times or reverse frame sequence. Images can also be downloaded to a client PC.

Camera Tab

Use your mouse to control Pan/Tilt, Zoom, and Preset networked camera features. Click on any point within the image to change camera direction. (*Only with compatible cameras.)

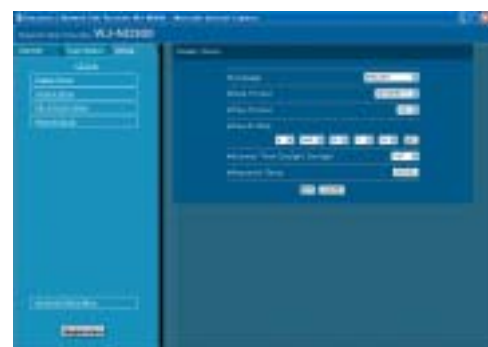
Main Screen Live

Easy Setup

For quick and easy choose Quick Setup. To fine tune your settings choose Advanced Setup.

Quick Setup

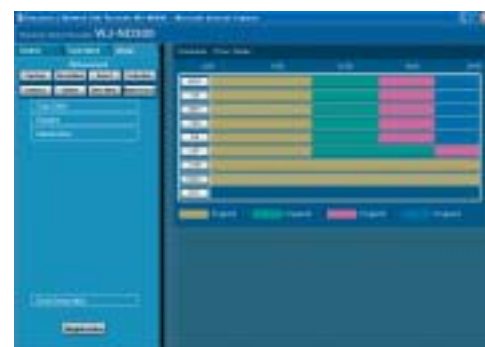
Display Setup, Camera Setup, Rec & Event Setup, and Network Setup: These four simple steps are all it takes to set up a basic system.



Example of screen showing quick setup functions.

Advanced Setup

System, Recording, Event, Schedule, Camera, Communication, User Management, and Maintenance steps allow you to fine tune your system. Frame rate can be specified for each camera.



It's easy to create a recording schedule time table.

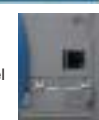
Measurement Function for Frame Rate Selection

After setting the WJ-ND300's monitoring and recording frame rate, click on the Measurement button to measure and display the frame rate for each camera. A red display signals that the frame rate selected has exceeded the available network bandwidth capacity.



Maintenance Port Located on the Front Panel

The maintenance port on the front panel of the WJ-ND300 makes it easy to connect the recorder to a PC.

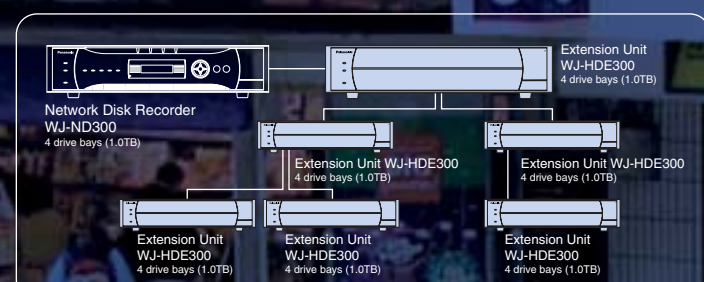


Outstanding scalability simplifies large system construction

Increase storage capacity, locate WJ-ND300 Network Disk Recorders in multiple locations, combine digital with analogue systems. WJ-ND300 makes it so simple.

Extension Unit WJ-HDE300 For high-capacity systems with 7TB of storage

The WJ-HDE300 can be equipped with up to 4 disk drives. Systems can have up to 28 drives (one 4-drive WJ-ND300 Network Disk Recorder + six 4-drive WJ-HDE300 Extension Units), for a total of 28 x 250GB = 7TB of storage.



Management PC Software WV-AS65 For multi-location surveillance using up to 100 WJ-ND300 Recorders



- 1 Title Bar
- 2 Menu Bar
- 3 Tool Bar
- 4 FAVORITE Tab
- 5 RECORDER Tab
- 6 Image Display Area
- 7 Channel Search Buttons
- 8 Camera Control Panel
- 9 RECORDER Control Panel
- 10 Status Bar

Network Mode

Remote control for multiple WJ-ND300 recorders via the network.

Display up to 16 channels at once

For live monitoring and playback, select a 1, 4, 9 or 16 window display. Drag and drop cameras from the Recorder & Camera Tree to the screen position of your choice.

Favorite Register

Register up to 500 frames and camera positions for instant access.

All-at-Once Search

Allows use of Filtered Search for images stored on multiple WJ-ND300 recorders.

Local Mode

Download images stored on multiple WJ-ND300 recorders to a client PC for Filtered Search, playback and management.

Two Download Types

Scheduled Download automatically downloads images at designated intervals. Manual Download is used for downloading live or playback images as needed.

Maintenance

Optimize PC hard disk space, erase all image files, or automatically delete files at specified intervals.

SPECIFICATIONS

WJ-ND300 Registration Capacity	up to 100 sets
User Registration Capacity	up to 32 users
User Types	5 types
Schedule Registration Capacity	up to 400 schedules
Favorite Registration Capacity	up to 500
Simultaneous Downloads	up to 10 accesses
Simultaneous Camera Image Displays	up to 16 cameras
Simultaneous File Playbacks	up to 4 files

*All of the photographs above were taken for the purpose of explanation; actual images may differ.



Network Disk Recorder WJ-ND300

*This product is using Axis HTTP API version 2.0. Approved by Axis Communications.

MAJOR OPERATING CONTROLS & TERMINALS

Front View

Rear View

- ① Operate Indicator
- ② Alarm Suspension Indicator
- ③ Alarm Indicator
- ④ Error Indicator
- ⑤ Timer Indicator
- ⑥ Recording Indicator
- ⑦ Camera Link Indicator
- ⑧ PC Link Indicator
- ⑨ HDD Access Indicators
- ⑩ LCD
- ⑪ Arrow Button
- ⑫ Escape Button
- ⑬ Set Button
- ⑭ Maintenance Port

- ① External Storage Connector
- ② Client PC Port
- ③ Camera Port
- ④ Serial Connector (for maintenance purpose)
- ⑤ Alarm Connector
- ⑥ Alarm/Control Connector
- ⑦ Power Switch
- ⑧ Signal Ground Terminal
- ⑨ Power Cord Inlet

SPECIFICATIONS

General	
Power Source	220 V - 240 V AC, 50 Hz
Power Consumption	85 W
Ambient Operating Temperature	+5 °C to +45 °C
Ambient Operating Humidity	Less than 85 %
Maximum Operating Altitude	2,000 m above sea level
Dimensions	420 mm (W) x 88 mm (H) x 350 mm (D) (excluding rubber feet and projections)
Weight	8.3 kg
Input/Output	
External Storage	High-speed serial interface, 480 Mbps (theoretical value), x1
Alarm/Control Connector	Emergency recording input*1, alarm output for available disk space of the HDD copy/event recording area*2, HDD error output*2, camera error output*2, error output*2, power outage recovery completion output*1, time adjustment input/output*3, power outage detection input*1, external recording mode switching*1, alarm output 8-16*2, alarm suspension input*1, alarm reset input*1, network error input*2, +5 V output*4, (D-sub 25-pin)
Alarm Connector	Alarm input 1-16*1, Alarm output 1-7*2, (D-sub 25-pin)
SERIAL Connector	RS-232C, x1 (9-pin D-sub)
Camera Port/PC Port	10 Base-T/100 Base-TX (RJ-45)
Maintenance Port	10 Base-T (RJ-45)

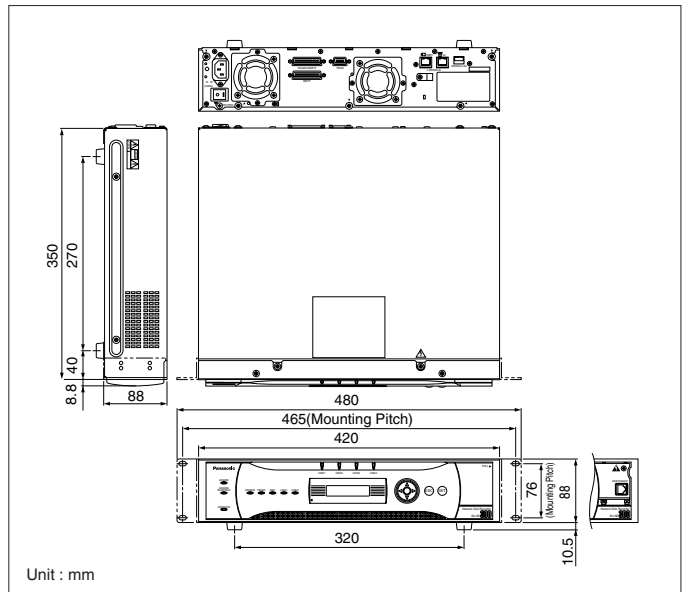
*1: Non-voltage make contact, -100 mA, +5 V pull-up

*2: Open collector output, 24 V max., 100 mA

*3: 52 kΩ, 5 V pull-up, -100 mA/make contact

*4: 200 mA at maximum

DIMENSIONS



OPTIONAL COMPONENTS & ACCESSORIES

Extension Unit
WJ-HDE300
(4 drive bays for optional HDD units)

Management PC Software
WV-AS65

Mega Pixel Colour Network Cameras
WV-NP1000 Series

- MPEG-4/JPEG output
- 600 TV lines

Lens: optional

Network Security Colour Cameras
WV-NP240 Series

- MPEG-4/JPEG output
- SD Memory card slot

Lens: optional

Network Security Colour Camera
WV-NP472

Lens: optional

Digital Disk Recorders
WJ-HD300A Series

- WJ-HD316A** (16ch)
- WJ-HD309A** (9ch)

Vandal Proof Network Colour Dome Cameras
WV-NW470S Series

Network Colour PTZ Dome Cameras
WV-NS320 Series

Trademarks and registered trademarks – Microsoft, and Windows are registered trademarks of Microsoft Corporation in the U.S. and other countries.

– Axis is a registered trademark of Axis Communications AB.

Important – Safety Precaution: carefully read the operating instructions and installation manual before using this product.

– Panasonic can not be responsible for network performance and/or other manufacturer products that reside on the network.

• All TV pictures are simulated. • Weights and dimensions are approximate. • Specifications are subject to change without notice. • These products may be subject to export control regulations.

DISTRIBUTED BY:

Panasonic System Solutions Company
Matsushita Electric Industrial Co.,Ltd.
4-3-1, Tsunashima-higashi, Kohoku-ku, Yokohama,
223-8639, Japan
Tel 81(0)45-540-5769
Fax 81(0)45-540-5773
URL <http://panasonic.co.jp/psc/cctv/en/index.html>

Panasonic
Panasonic is the brandname of Matsushita Electric.
Printed in Japan WJ-JKND300C(2N-749B)