

AP-360B Series

Motion detection and smart automation



AP-360B

WIRED PIR

AP-360BR

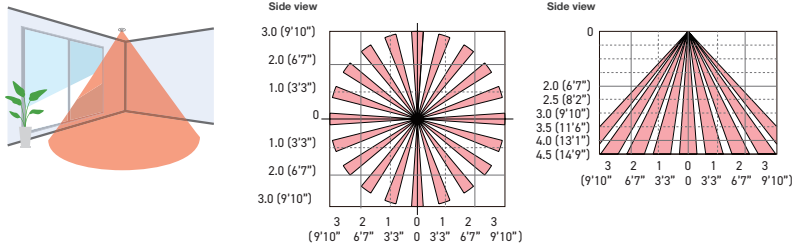
BATTERY-OPERATED PIR

Recessed mount indoor PIR motion detectors offering 360-degree detection area for security and home/building automation applications.



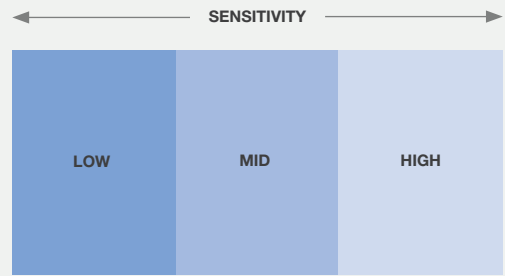
Ceiling mount 360-degree detection

Compact and discreet, AP-360B/BR sensors are installed in the ceiling to detect movement in lobby's, offices or rooms. Mounted at 4.5m (14.9') one detector will cover an area of 6m (20').



Selectable sensitivity

Detection sensitivity can be set to low, medium or high, to adapt to the ambience conditions.



Home and building automation



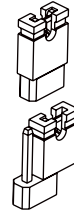
AP-360B/BR can be used for home and building automation applications, such as triggering escalators, air-conditioning, CCTV, audio announcement system, chime.

φ

Energy saving



Timer



In AP-360BR it is possible to enable the Battery Saving Timer with a choice between 120 sec (default) or 5 sec.

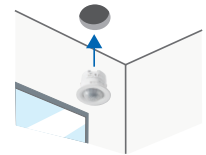
Specifications

Model	AP-360B(C)	AP-360BR(C)
Detection method	Passive infrared	
Detection area	< Ceiling mount > φ6m (20') at mounting height 4.5 m (14'9")	
Mounting height	2.5 to 4.5 m (8'2" to 14'9")	
Mounting type	Recessed ceiling mount/86-type box mount	
Sensitivity	2.0°C at 0.6 m/s (3.6°F at 2'/s)	
Detection speed	0.3 to 3.0 m/s (1'/s to 9'10"/s)	
LED indicator	Warm-up upon power on: blinking / Stand-by: off Alarm: solid on	Warm-up upon power on: blinking / Stand-by: off Walk test: solid on Alarm: off
Alarm period	Approx. 2s / 30s / 120s (selectable)	Approx. 2 s
Illuminance	20 to 320 lux (variable/not detected)	-
Battery saving timer	-	120 s / 5 s selectable
Alarm output	N.O./N.C., 28 V DC 200 mA max.	N.O./N.C., 3.6 V DC 10 mA max.
Tamper switch	N.C. 28 V DC 100 mA max. The contact opens once the casing is detached.	
Warm-up time	Approx. 60 s	
Power supply	9.5 to 16 V DC	2.7 to 3.6 V DC (CR123A battery)
Current	12 V DC Stand-by: 11mA, Max.: 13 mA	3 V DC Stand-by: 10µA, Max.: 4 mA
PIR sensitivity	H/ M/ L	
Weight	50 g (1.76 oz)	
Operation temperature	-20 to +50°C (-4°F to +122°F)	
Operation humidity	< 95%	
Location	Indoors	
Dimensions	ø52 x 42.5 mm (ø2.05 in. x 1.67 in.): without switch box 86 x 86 x 42.5 mm (3.39 x 3.39 x 1.67 in.): with 86-type box	

Recessed or 86-type box mount installation

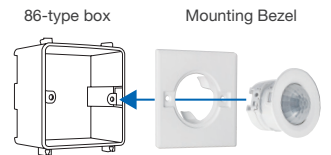
Recessed Mount

The detector can be installed with recessed mount on the ceiling.

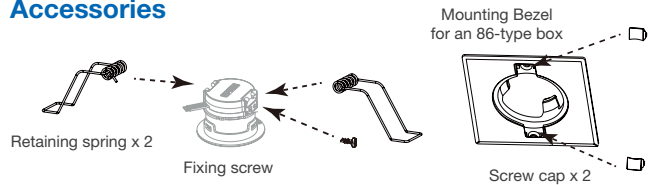


Recessed Mount with 86-type box

86-type box mount is available by using the included decorative plate.

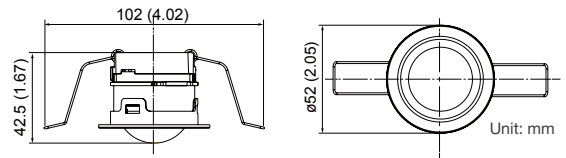


Accessories



Dimensions

Without switch box



OPTEX CO., LTD. (JAPAN)
www.optex.co.jp/e

OPTEX EMEA Security Headquarters

OPTEX EUROPE LTD (UK and Africa)
OPTEX Security B.V. (EU)
OPTEX Dubai Branch (Middle East)
W: www.optex-europe.com
E: marketing@optex-europe.com

OPTEX SECURITY SAS

(France, French speaking North
and West African countries)
W: www.optex-europe.com/fr
E: contact@optex-security.com

OPTEX SECURITY Sp.z.o.o.

(Eastern Europe, Turkey)
W: www.optex-europe.com/pl
E: optex@optex.com.pl