

AEOS faces: Graphical Alarm Handler

For a well-functioning security policy, it is crucial that alarms are handled consistently and registered properly. This can only be achieved if there are clear alarm handling procedures and work instructions. This can be a challenge, especially if security tasks and guard services are outsourced. The frequent changes in security personnel and guards can be a potential risk for the consistent handling and proper registration of alarms. The AEOS Graphical Alarm Handler gives security managers a practical tool to enforce the uniform handling of alarms and to check during or after an alarm how it was handled.

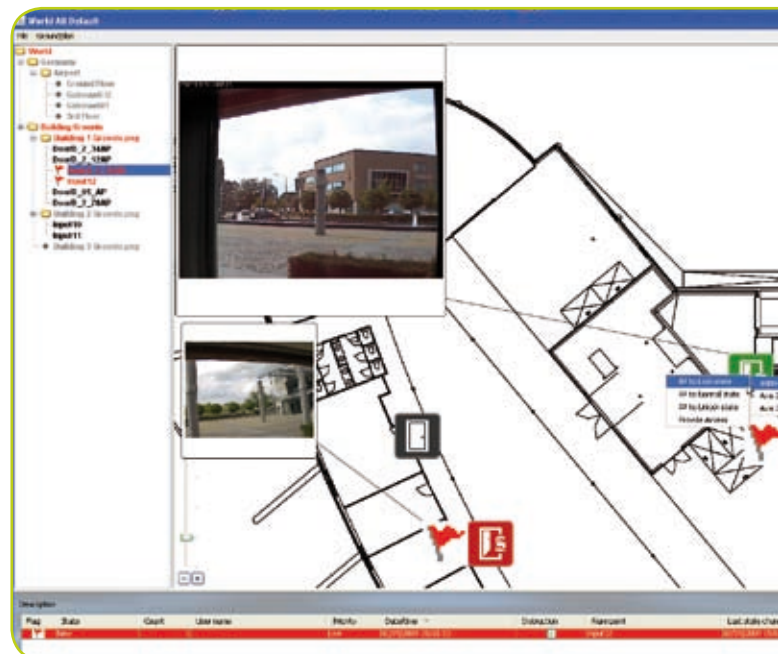
- Combined text & graphical alarm monitor
- Monitor and handle alarms
- Freely definable alarm points
- Add video images to your maps
- Fully integrated in AEOS

Graphical representation

The AEOS Graphical Alarm Handler is a web-based tool to handle alarms in AEOS, giving a clear overview of the security status of your premises. Thanks to the graphical representation of buildings, floor plans and alarm points, it provides users with a convenient instrument to visualize and control alarms. In a glimpse the security manager has all the important information at his disposal: status of the doors, armed intrusion points, alarm points, etc.

Applications

The Graphical Alarm Handler can be used to show the status of alarm points on maps, display alarms in a tree view or give an audio-visual presentation of the status of software components. It can also give direct commands, for example to open a door, activate the intercom or disarm an alarm system. If there is a video surveillance system in place, the Graphical Alarm Handler can be used as well to activate live video images from IP network cameras and URLs for alarm points. Apart from that it also shows who is handling an alarm. The Graphical Alarm Handler is built on an AEOS face. Since it is web-based, there is no need for extra client software and it continues to display the status of alarm points and to send commands even when a user has logged out of AEOS or the server is down.



Handling alarms

If there is an alarm at your premises, it appears on a map on your computer screen, telling you exactly where the alarm went off. Each alarm must be responded to and be confirmed and assigned to a particular guard. The automatic escalation function makes sure that the alarm is automatically transferred to another person if it is not responded to within a certain period of time. Different alarms don't always require the same approach. Therefore, it is possible to predefine instructions on how guards should respond to particular alarms. All of the actions performed are fully logged, allowing system users and their supervisors to keep track of who responded, how quickly, etc. This is particularly useful for the posterior evaluation of a security event.

Freely definable

The alarm handling can be configured any way you want so as to conform to the company's specific security needs. The alarms are freely definable, allowing users to set their own definitions of the events that should generate an alarm. Users generally want burglary attempts to trigger an alarm, but others will consider the presentation of an invalid access badge sufficient to generate an alarm. In line with this, alarm events can be categorized as critical, high, medium or low importance. Also the icons and sounds for the alarms in your maps are freely definable. You can just drag and drop the alarm points with the accompanying icons to the correct positions in the map.

Fully integrated in AEOS

Since the Graphical Alarm Handler is fully integrated in AEOS, there is no need for an additional server software application, operating system, database or server hardware. Neither is it necessary to redefine or reconfigure the access points, intrusion points and camera URLs because they are already configured, defined and available in AEOS. The only thing that needs to be done is to analyze the maps of your premises to determine which alarm points you want to display in the alarm handler.

With the AEOS Graphical Alarm Handler security managers no longer have to compromise on security, because alarms can no longer be missed or lost. From now on, each and every alarm can be responded to with an appropriate action.

- Alarm Handler (text based): product number: 8015775
- Graphical Alarm Handler: product number: 8015848