

SoftDVR™ Pro

Easy-to-use 16-channel IP surveillance software



Moxa's SoftDVR™ Pro IP surveillance software is designed for video-over-IP surveillance systems that use Moxa's VPort series of video servers as their distributed video networking solution. With the help of Moxa SoftDVR™, system integrators can seamlessly integrate other applications, such as I/O sensors and alarms, with CCTV systems over an IP-based network.

Introduction

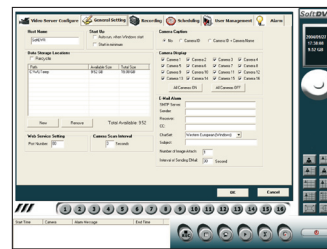
Viewing and Playback—Anywhere, Anytime

- Remote access from popular web browsers
- Supports 1, 4, 6, 8, 9, 10, 13, 16 camera viewing formats
- Maximum of 16 cameras in a system
- Synchronized video/audio viewing and recording (for VPort MPEG4 video servers)
- Historical playback by time and event
- Zoom-in/Zoom-out function for individual cameras when playing back images
- Take snapshots in playback mode to get JPEG images for printing or to save as evidence
- Can adjust the contrast, brightness, sharpness, blur, and grayscale of the snapshot image



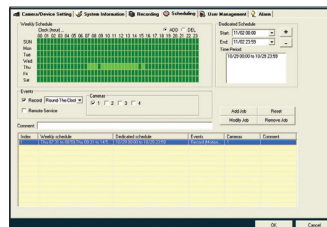
Record and Store over the Network

- Recording action can be triggered in round-the-clock mode or event mode of VMD (Video Motion Detection) and DI
- Record video in AVI format—compatible with popular media players
- Dynamically adjust recording frame rate over the LAN/Internet to match the real frame transmit speed, to keep the video synchronized with the actual time
- Recorded video format can be selected as adjustable FPS MJPEG, or MPEG4 standard, for VPort MJPEG video servers
- Recyclable override of hard disk space in FIFO (First-In-First-Out) sequence
- Recorded video files can be stored on a local PC or Windows-based networked storage server



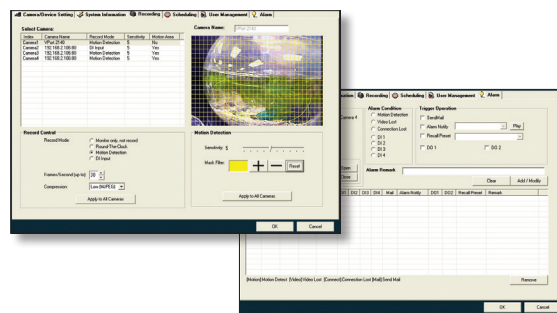
Schedule Jobs for Recording and Remote Service

- Administrators can set up the time schedule of remote service and the recording action for each camera



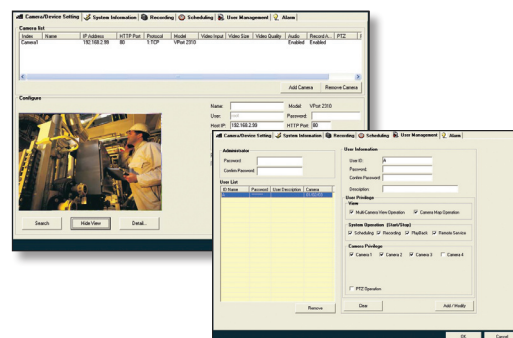
Trigger and Send Alarm Messages

- Area-selectable Video Motion Detection (VMD) function for each camera
- Sensitivity tuning for the VMD
- Alarm can be triggered by VMD, video lost, communication failure, storage failure, storage full, DIs, and then sent by email, or trigger relays (DOs), sound, or a PTZ camera to a preset position



Video Server Configuration and System Management

- Can configure each camera's name, video quality, and video resolution separately
- Supports PTZ camera controls (same as VPort series video servers' support list)
- Supports Moxa's VPort series of video servers
- Up to 32 users can be added to one system
- Supports remote VPort's firmware upgrade
- Can set up the camera view and system operation for each user
- Automatically resume viewing and recording after system reboot
- Cameras can be managed easily with your own e-map



: System Requirements

Operating System: MS Windows XP

SDRAM: 1 GB or more

DirectX: 9.0C or above

Intel Dual Core: 2.0 GHz or more

Nvidia GeForce or ATI TNT2 Graphics Card: At least 64 MB of display memory required

: Ordering Information

Available Models

SoftDVR™ Pro: 16-channel IP surveillance software for viewing and recording

Package Checklist

SoftDVR™ Pro CD: Includes the SoftDVR™ Pro software, SQL database software, and user's manual

Key Pro: Plugs into the USB port

Printed Manual: Moxa SoftDVR™ Pro Quick Installation Guide

SoftDVR™ Lite Bundled FREE with VPort Series Video Servers

- 1 to 4-ch (Quad) viewing format; max. 4 cameras
- Supports viewing and recording on local PCs
- Full image VMD with sensitivity tuning
- Schedule jobs for recording
- System requirements:
 - MS Windows XP
 - 512 MB SDRAM or above
 - Nvidia GeForce or ATI TNT2 graphics card with 32 MB display memory or above
 - Intel Pentium 4 , 2.4 GHz HT (Hyper-Threading) or above
 - DirectX 9.0C or above

