

nethunter

Mitsubishi Electric have developed a new CCTV software management system; Net Hunter. Recent CCTV market studies suggest a shift away from the most common form of security solutions (DVR's and analogue cameras) and more towards IP systems. With this in mind, Mitsubishi Electric has developed a software system which can operate both DVR and IP systems.

BASICS

Net Hunter is an essential single-server video system that has been designed to manage IP cameras, NVR and DVR's. Combining Mitsubishi's CCTV expertise with a new user-friendly design format, Net Hunter can integrate IP and analogue cameras quickly and easily.

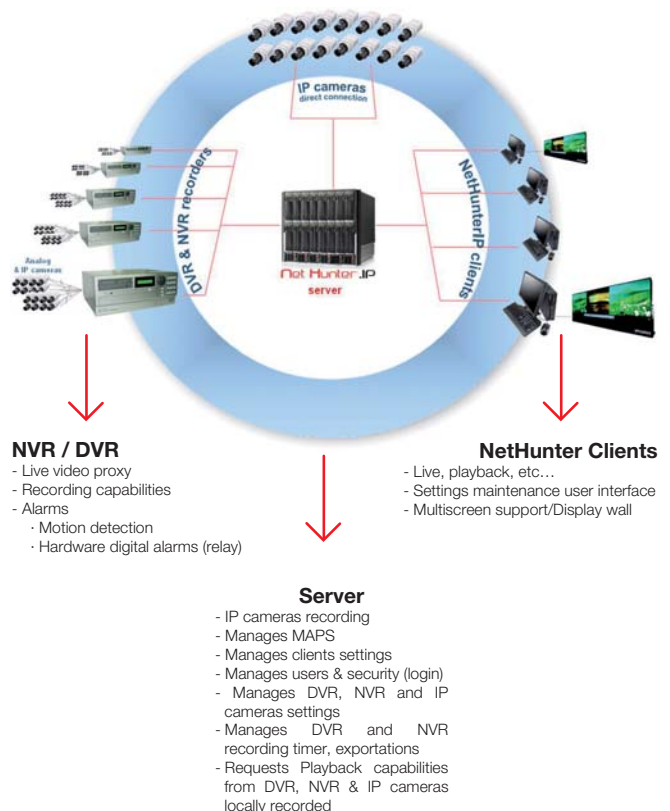
Operating a Mitsubishi IP Camera with Net Hunter couldn't be simpler, with features such as camera control, motion detection (HW), intelligent PTZ and local drive archiving. Also accessible through a fully-featured remote, users can monitor their CCTV footage from across the world. Net Hunter is compatible with all Mitsubishi DVR's, giving users the opportunity to move towards IP solutions gradually over time.

Net Hunter is a CCTV software based on a flexible server-client architecture system; users can choose to install the software on just one PC, on the Server, on Client systems, or on Client and Server systems together.



Net Hunter is compatible with both DVR & IP:

- Mitsubishi IP: systems, Box camera, Dome camera, PTZ camera, IP video server and NVR.
- Mitsubishi DVR, all the different DVR models Mitsubishi have developed or will develop.



nethunter

Net Hunter features

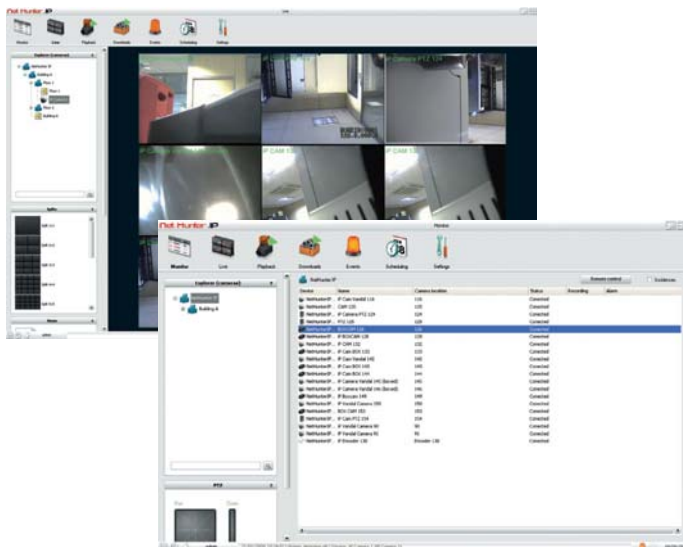
- Single server video surveillance for managing Mitsubishi IP cameras, Mitsubishi NVRs and Mitsubishi DVRs.
- Multiple clients supported.
- Live view and playback.
- PTZ management.
- Multiple view layouts. Fully configurable split layouts.
 - Save personalised views and retrieve from any client.
- Multiple screen support. Compatible with Mitsubishi Video Walls.
- Remote configuration of IP systems and DVRs.
- Hierarchy groups creation & maintenance through an explorer view.
- MAPS management.
- Hardware alarm triggered actions.
- User creation and maintenance with permissions.
- Export JPEG/MPEG images from live or recorded video.
- Automated and manual downloads of the recorded video.
 - Digital signature with encrypted password.
- Different scenarios support
 - Scalable systems through NVRs and/or DVRs.
 - Multiple IP cameras supported for both live or recording operations.
 - Network storage options: NAS, SAN, ...
- Backup server settings and configuration. Easy import.
- Easy to use interface and nice look & feel.

System requirements

Any configuration increasing the processing capacity/speed, increasing the speed or amount of memory or any other component is acceptable.

Net Hunter is certified to run with any of the operating systems specified below. Mitsubishi Electric can not confirm certification with any other operating systems.

Component	Server	Client
CPU	Intel Core 2 Duo with 800 MHz FSB	Intel Quad-Core Core 2 with 800 MHz FSB
RAM (memory)	2 Gb, DDR2-533(PC2-4200)	2 Gb, DDR2-533 (PC2-8500)
Video card	Any standard VGA graphics card	NVidia GeForce 8,9,200-series with a minimum of 256 MB of local graphics memory.
Storage (OS & NH IP NVR recorded video, exported video)	Minimum 80 GB for Net Hunter and Operative System. Also with default camera configuration and normal conditions between 1 and 3 Gb/hour per recorded IP camera.	Minimum 80 GB for Net Hunter and Operative System. Same amount of disk space than the server for video download/export purposes.
Media	No special media devices required.	CD/DVD/Blu-ray™ recorder or USB storage devices for video exportation.
Operating System	Microsoft Windows® XP Professional SP2 or Microsoft Windows® Vista SP1	
Network card	LAN Ethernet 10/100/1000	



NVR / DVR / IP Cameras



 **MITSUBISHI ELECTRIC AUSTRALIA**

348 Victoria Rd Rydalmere, NSW 2116 Phone: (02) 9684 7777 Fax: (02) 9684 7208

www.MitsubishiElectric.com.au