



## NDR722

2MP Indoor IR Dome Network Camera

1/2.7" Lumii sensor, H.264, 7M (23ft) IR, dual streams, ICR D/N, WDR, built-in mic, PoE

MESSOA NDR722 is a small-sized full HD IR dome camera designed for maximum flexibility and plug-and-play integration with MESSOA Lite Series NVR. Measuring merely 83mm in diameter, the palm-sized form factor allows the camera to easily blend into the surroundings, meeting unusual requirements for discreet and covert surveillance. The 4mm lens provides wider coverage coupled with the embedded wide-angle IR illuminator, leaving no blind spot undetected. The camera also features PoE and built-in microphone to make it a versatile choice for indoor projects, such as residence, retail stores, boutiques, hotels and offices.



ONVIF



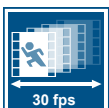
### Easy Plug-and-play NVR Solution Ready

The camera supports plug-and-play when joined with the MESSOA Lite Series NVR, making installation easy and hassle-free. It is ideal for users who are new to IP technology but want to take a leap forward from analog.



### 7m Night Vision with Even IR Illumination

Built in with the patented matrix IR LED, the camera ensures wide-angle, even illumination up to 7 meters. Further enhanced by its smart sensor design, the camera accurately detects changes in lighting and delivers perfect image quality in low light conditions.



### Superior Video Quality at Full Frame Rate

With video quality up to 30fps, the camera captures every critical moment with smooth video display and no frame loss guaranteed. Blurry images are reduced as objects of interest come through in perfect clarity.



### True Day/Night with Mechanical IR Cut Filter

The camera automatically detects changes in light intensity and switches between color and B/W modes. It provides perfect color images at day time and crisp monochrome images at night or any other dark environment.



### Compact Design Ideal for Discreet Surveillance

The sleek, compact-designed housing allows the camera to be easily installed and blend in the environment for unobtrusive monitoring, which is perfectly suited where discreet, covert surveillance is required.

## Specifications

Video	
Sensor Type	1/2.7" 2MP progressive scan CMOS sensor
Active Pixels	1920 x 1080 (HxV)
Compression	H.264/MPEG4/Motion JPEG
Streaming	Dual simultaneous streams
Resolution	1920x1080, 1280x720,800x450, 640x360, 320x180
Max. Frame Rate	Full HD (1920x1080) at 30/25fps (NTSC/PAL)
Day/Night	Mechanical (ICR) D/N Control
Day/Night Mode	Auto/Day/Night
Shutter Time	Range from 1/7s to 1/30,000s selectable
Minimum Illumination	IR LED Off (shutter speed: 1/30 sec): 0.1 Lux @10IRE; 0.5 Lux @50IRE, IR LED On: 0 lux
Bit Rate Control	Simultaneous stream bit rate control: CBR/VBR/ECBR/EVBR
Lens	
Lens Type	Built-in; fixed Lens,
Focal Length	f=4mm, F1.5
View Angle	H: 77.4° / V: 45.1°
IR LEDs	
LED Quantity	16 pcs Matrix IR (850nm)
IR Distance	7 meters (23 ft.)
IR turn on status	Under 10 Lux by auto control (light sensor), threshold adjustable in UI
LED Life	More than 10,000 hours (50°C)
Audio	
Compression	ACC, G.711 $\mu$ -Law , PCM, 8kHz
Audio In/Out	Built-in microphone
Image Enhancement	
Image Settings	AWB, AES, AGC; Flickerless Mode: On/Off Exposure & Gain Mode: Auto/Manual; White Balance: Auto/Fixed; Sharpness, Saturation, Brightness, Contrast: 17 level sensitivity; Exposure: 15 level sensitivity
Digital WDR	Yes; 8 level sensitivity
DNR	Auto/On/Off
Privacy Zone	Yes; customized threshold privacy zone (up to 8)
Image Orientation	Mirror, Flip
Frequency Control	50Hz, 60Hz
Date & Time Stamp	Yes
Test Overlay	Yes
Intelligent Video & Event Management	
Motion Detection	Up to 3 customized threshold detection windows, 101 detected object size or level sensitivity
Ethernet Detection	Network Fail detection
Others	Snapshot, digital Zoom, Optimized i-frame setting
Events	Motion/Tamper detection, Manual Trigger, Network Fail, Periodically Trigger

Event Actions	File upload via FTP, SMTP and SAMBA; Notification via FTP, and email; Video and audio recording to SAMBA
Store Category	Alarm/Motion/Schedule/Un-interrupt recording Stores video clips and snapshots
Network	
Protocol	IPv4, IPv6, HTTP, HTTPS, SMTP, FTP, DHCP, NTP, TCP/IP, UPnP, RTSP/RTMP/RTCP, DNS, DDNS, PPPoE, IGMP, QoS, Bonjour, Samba, Multicast.
Ethernet	10Base-T/100Base-TX Ethernet connection for LAN/WAN, RJ-45
ONVIF	Yes
Browser	IE Browser 8.0 or above, Chrome, Firefox, Safari
Security	Three-level access with password protection
I/O & Controls	
Power	DC Jack (2.0mm)
Power LED Indicator	Yes
Network	RJ-45 with LEDs (Network indicator)
Audio In/Out	Built-in Microphone
Reset	Within 1 sec for rebooting system; more than 10 sec until red LED starts to flash for loading default
Bicolor LED	Power & System Status
Power	
Power Requirement	DC 12V $\pm$ 10% / PoE (IEEE 802.3af)
Power Consumption	7W (Max.)
Mechanical	
Dimensions ( $\Phi$ xH)	$\Phi$ 83mm x 73.3mm ( $\Phi$ 3.27" x 2.89")
Weight	300g (0.66 lb)
Battery Backed-up Real-time Clock	Yes; Internal RTC
Pan/Tilt Adjustment	Tilt: from 28° to 70° (Max.)
Environmental	
Operating Temperature	0°C ~ 50°C (32°F ~ 122°F)
Operating Humidity	20~ 90% RH
Storage Temperature	-10°C ~ 55°C ( 14°F ~ 131°F )
Regulatory	
Approvals	CE, FCC, RoHS
Ordering Information	
Model No.	NTSC: NDR722-N1-MES; PAL: NDR722-P1-MES;
Accessories	Ceiling Mount Metal Bracket Wall Mount Bracket (optional) : SAD002

## Dimensions

