



NCR770

1MP IR Bullet Network Camera

1/4" Lumii sensor, H.264, 10M (33ft) IR, dual streams, ICR D/N, WDR, PoE, IP67

MESSOA NCR770 is a mini-sized, high-performance bullet-type megapixel IR camera designed for maximum flexibility and plug-and-play integration with MESSOA Lite Series NVR. Measuring just 10cm in length, the compact yet versatile form factor makes the camera a perfect solution for applications demanding discreet and non-intrusive installations, such as boutiques and retail shops. The built-in IR LED provides night vision up to 10 meters. The IP67-rated water-resistant metallic housing also adds assurance to the camera's durability and reliable operation in a wide range of indoor/outdoor environments.

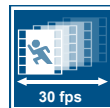


ONVIF



Easy Plug-and-play NVR Solution Ready

The camera supports plug-and-play when joined with the MESSOA Lite Series NVR, making installation hassle-free. It is ideal for users who are new to IP technology but want to take a leap forward from analog.



Superior Video Quality at Full Frame Rate

With video quality up to 30fps, the camera captures every critical moment with smooth video display. Increased frame frequency reduces blurry images and particularly suits motion-sensitive applications.



10m Night Vision with Even IR Illumination

Built in with IR LED, the camera provides night vision up to 10 meters. The IR illuminator is further enhanced by its smart sensor design to accurately detect changes in lighting and to deliver perfect image quality in low light conditions.



Outdoor-ready Design Ensures Camera Durability

The camera is perfectly suited for both indoor and outdoor environments with its IP67-rated water-resistant housing, which ensures protection against heavy rain and dust.



Compact Design Ideal for Discreet Surveillance

The sleek, compact-designed housing allows the camera to be easily installed and blend in the environment for unobtrusive monitoring, which is perfectly suited where discreet, covert surveillance is required.

Specifications

Video	
Sensor Type	1/4" 1M progress scan CMOS sensor
Active Pixels	1280 x 800 (HxV)
Compression	H.264/MPEG4/Motion JPEG
Streaming	Dual simultaneous streams
Resolution	(WXGA)1280x 800, 1280x 720,800x450, 640x360, 320x180
Max. Frame Rate	Megapixel (1280x 800) at 30 fps (NTSC/PAL)
Day/Night	Mechanical (ICR) D/N Control
Day/Night Mode	Auto/Day/Night
Shutter Time	Range from 1/960s to 1/30s selectable (60Hz); Range from 1/1000s to 1/25s selectable (50Hz)
Minimum Illumination	IR LED On: 0 lux
Bit Rate Control	Simultaneous stream bit rate control: CBR/VBR
Lens	
Type, Focal Length, F-number	Built-in Fixed Lens, f=4.2mm, F1.8 (Mega pixel lens)
View Angle	H: 49.8° / V: 39°
IR LEDs	
LED Quantity	12 pcs (850nm)
IR Distance	10 meters (33 ft.)
IR turn on status	Under 10 Lux by auto control (light sensor), threshold adjustable in UI
LED Life	More than 10,000 hours (50°C)
Image Enhancement	
Image Settings	AWB, AES, AGC; Flickerless Mode: On/Off Exposure & Gain Mode: Auto/Manual; White Balance: Auto/Fixed; Sharpness, Saturation, Brightness, Contrast: 17 level sensitivity; Exposure: 15 level sensitivity
Digital WDR	Yes; 8 level sensitivity
Privacy Zone	Yes; customized threshold privacy zone (up to 8)
Image Orientation	Mirror, Flip
Frequency Control	50Hz, 60Hz
Date & Time Stamp	Yes
Test Overlay	Yes
Intelligent Video & Event Management	
Motion Detection	Up to 3 customized threshold detection windows, 101 detected object size or level sensitivity
Ethernet Detection	Network Fail detection
Others	Snapshot, digital Zoom, Optimized i-frame setting
Events	Motion detection, Manual Trigger, Network Fail, Periodically Trigger.
Event Actions	File upload via FTP, SMTP and SAMBA; Notification via FTP, and email; Video recording to SAMBA
Store Category	Alarm/Motion/Schedule/Un-interrupt recording Stores video clips and snapshots

Network	
Protocol	IPv4, HTTP, HTTPS, SMTP, FTP, DHCP, NTP, TCP/IP, UPnP, RTSP/RTMP/RTCP, DNS, DDNS, PPPoE, IGMP, QoS, Bonjour, Samba, Multicast
Ethernet	10Base-T/100Base-TX Ethernet connection for LAN/WAN, RJ-45
PoE	IEEE 802.3af
ONVIF	Yes
Browser	IE Browser 8.0 or 9.0
Security	Three-level access with password protection
I/O & Controls	
Power	DC Jack (2.0mm)
Power LED Indicator	Yes
Network	RJ-45 with LEDs (Network indicator)
Reset	Within 1 sec for rebooting system; more than 10 sec until red LED starts to flash for loading default
Bicolor LED	Power & System Status
Power	
Power Requirement	DC 12V ± 10% / PoE (IEEE 802.3af)
Power Consumption	9W (Max.)
Mechanism	
Dimensions(ΦxH)	Φ60 mm x 114 mm (Φ 2.4" x 4.48")
Weight	548g (1.21 lb) w/o bracket
Protection	IP67
Battery Backed-up Real-time Clock	Yes; Internal RTC
Environment	
Operating Temperature	-10°C ~ 50°C (14°F ~ 122°F)
Operating Humidity	20~ 90% RH
Storage Temperature	-10°C ~ 55°C (14°F ~ 131°F)
Regulatory	
Approvals	CE, FCC, RoHS
Order Information	
Model No.	NTSC: NCR770-HN1-US-MES; PAL: NCR770-HP1-EU-MES; NCR770-HP1-CN-MES
Accessories	Wall Mount Stand Power Supply

Dimensions

