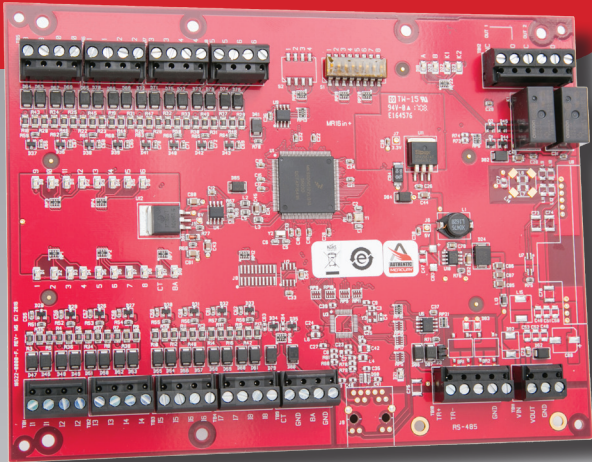


Series 3

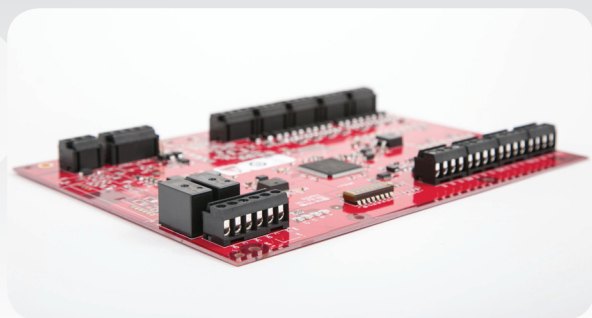
MR16IN

Serial I/O
16-input Interface Panel



Features

- 16 programmable inputs; 2 programmable relay outputs
- AES 128/256 bit data encryption
- UL 294 recognized, CE compliant, FCC, RoHS
- Configurable input parameters
- Initiates commands by operator, by time schedules, or by events
- Allows for easy and compact clustering of up to 16 uniquely monitored devices
- RS-485 host connectivity



- **Open Architecture:** High performance, reliable platform enables use of hardware with Mercury OEM partners software solutions
- **Easy Expansion:** Adds functionality and flexibility to existing access control systems
- **Enhanced Security:** Embedded crypto memory chip provides secured layer of encryption to protect sensitive data
- **Versatile Interoperability:** Same reliable interface and identical footprint as Series 2 Mercury IO modules, enabling seamless upgrades for existing deployments

The new Authentic Mercury MR Series 3 Serial Input/Output (SIO) modules enable system expansion of Authentic Mercury intelligent controllers as part of Mercury's distributed architecture. The enhanced modules offer an improved processor and increased memory, plus feature an embedded crypto memory chip that provides a secured layer of encryption to onboard sensitive data. Built on the Authentic Mercury open platform, Series 3 modules provide the necessary flexibility for OEMs, channel partners and end customers to choose the controller configuration that best fits their needs.

The MR16IN can be used for a variety of applications, including status annunciation and alarm monitoring applications such as lighting, heating/cooling, door and elevator control. Devices can also be activated by the condition of selected system devices, either locally or regionally, without host intervention.

The panel is dedicated to point control and monitoring, enables OEMs to support 16 general-purpose input circuits. The circuits can be individually set for sensitivity ranges, timing parameters (normally-open or normally-closed operations) and end-of-line resistance values. They can also be declared supervised and non-supervised. Two programmable relay outputs are configurable for fail-safe or fail-secure operation, supporting "On," "Off," "Pulse" and "Repeating Pulse" commands.

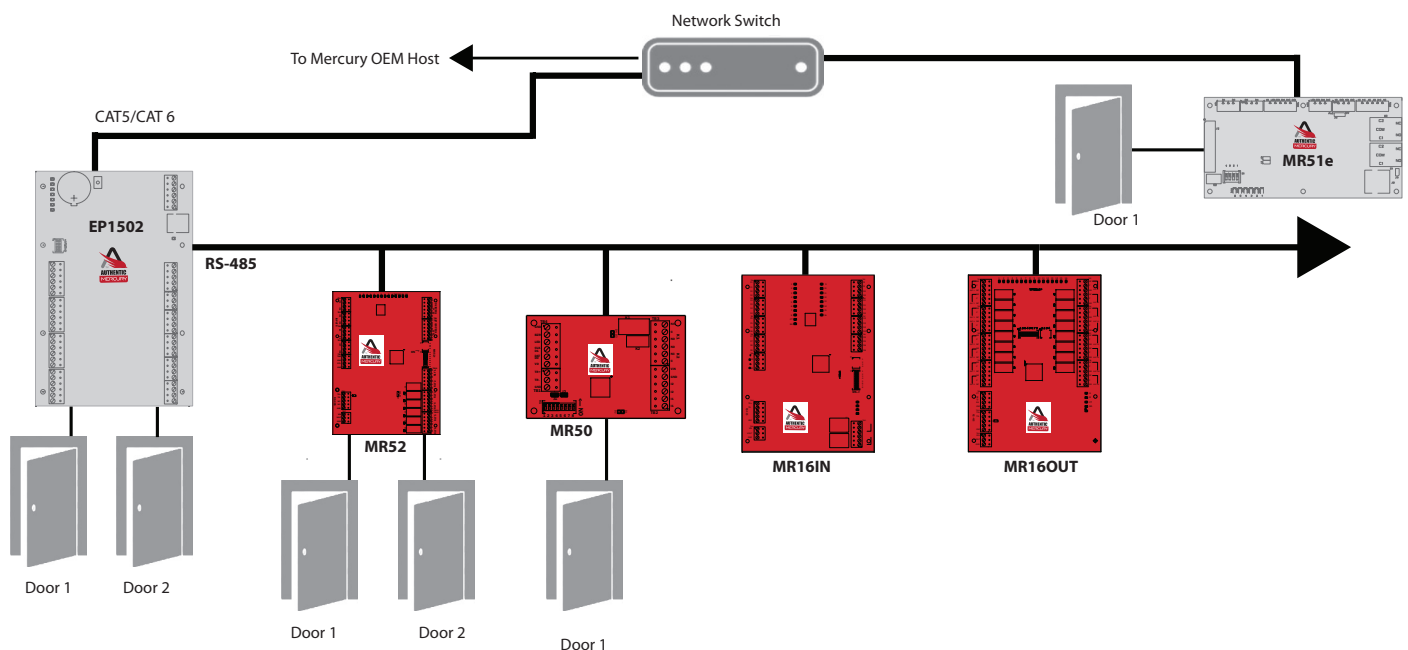
The MR16IN Series 3 is the latest generation door interface module for Authentic Mercury intelligent controllers, the platform of choice for customers seeking open architecture access control solutions.

MR16IN

Application Notes

The Mercury MR16IN is an essential component that supports Mercury's flexible, building-block approach to access control system design. The MR16IN provides the capacity to link, control and respond to an array of sensors. With its RS-485 connectivity, the MR16IN can be clustered or distributed to best suit each installation environment.

Specifications	
Primary Power	12-24 Vdc +/- 10%, 350mA maximum
Host Communication	RS-485, 2-wire, 4,000' (twisted pair with shield, Belden 9841)
Inputs	16 General Purpose: Programmable circuit type 2 Dedicated: Tamper and Power Monitor
Output Relays	Two Form-C Relays: Normally open contact (NO): 5A @ 30 Vdc resistive Normally closed contact (NC): 3A @ 30 Vdc resistive
Dimensions	6.0" W x 8.0" L x 1.0" H (152mm W x 203mm L x 25mm H)
Temperature	0-70 °C operational, -55-85 °C storage
Humidity	5 to 95% RHNC
Standards	UL 294 recognized, CE compliant, RoHS, FCC Part 15 Subpart B



The Authentic Mercury open platform delivers quality assurance derived from the most proven and reliable hardware in the industry. Driven by our engineering excellence and technology leadership, Authentic Mercury hardware is designed as an access control platform that easily encompasses emerging technologies, changing industry standards and evolving system environments. Make yours Authentic, **Make sure its Merc.**