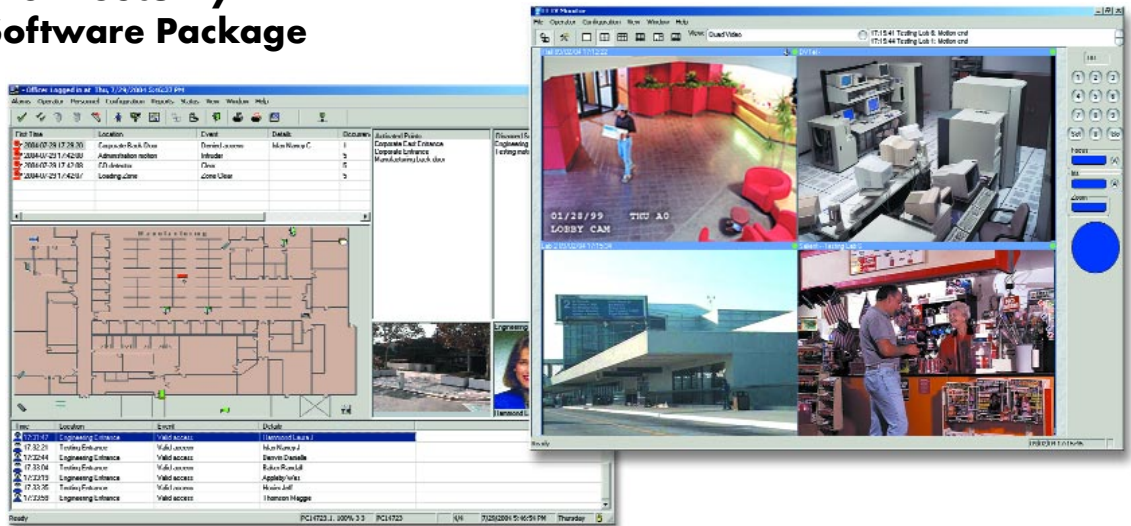


Encrypted Network Security Management Software Package



Complete Access Control Software Package

AXxess™ 202/NS is a powerful security management software package that provides multitasking support and flexibility. The open architecture enables you to build a security management system or to integrate with existing card readers and alarm monitoring devices. The features of AXxess 202/NS give you the power to customize your access control system to your specific needs — without requiring advanced technical expertise. This makes AXxess 202/NS ideal for a wide variety of applications such as multi-tenant office buildings, hospitals, government facilities, manufacturing facilities, airports and other security sensitive installations.

Multiport™

The unique MAXxess Multiport module works as a universal gateway to simplify the integration of other security or building management subsystems.

CCTV Monitor

The open architecture CCTV monitor module adds the capability to integrate various manufacturers DVRs IP cameras and video IP servers.* Utilizing bi-directional communication to these devices, any pre-determined event can control, display, record and archive both video and text information. Pre-recorded video may be retrieved and viewed by simply selecting the transaction on the screen.

Environmental Security

MAXxess is the first to integrate Environmental Security into a security management software package. With AXxess NS as the core management platform, this breakthrough innovation takes AXxess NS far beyond conventional access control, enabling security managers to detect and control threats such as chemical gases and chemical warfare agents, radiation, smoke and unauthorized vehicles. All seamlessly integrated and managed from a single desktop PC.

Flexible, Expandable and Reliable

The AXxess 202/NS Security Management System features a distributed processing architecture that utilizes remote intelligent control. By localizing access decisions at the hardware level, AXxess202/NS provides the fastest possible processing times. This distributed processing also provides maximum flexibility and the ability to add or delete access points without affecting overall system performance. Access decisions can be made accurately and without hesitation. Connections are made via standard data busses including RS-485, fiber and standard telephone dial-up or by using your existing Ethernet backbone.

Professor Max "Self-Teaching" System Operation

AXxess 202/NS software was the first security management system to include embedded on-line audio-visual movie files to teach operators how to utilize all the features as well as perform tasks required to manage a system.

Features

- For Windows® 2000 or XP Pro
- Supports multiple workstations
- Encrypted communications system-wide
- "Self-Teaching" system training and operation
- Environmental Security integration and management
- Graphical Floor Plan support
- Voice annunciation with action messages on Alarm
- Email on Alarm or designated System Event
- Database Partitioning
- AXxess NS includes 128 bit Rijndael data Encryption Module
- "Strong Passwords"
- Supports unlimited number of doors
- Unlimited system access levels (1,000 per RAMM), operators, time tasks, time zones
- Multi-language support
- Integrated CCTV management
- Integrated video badging
- Global input output control
- Global anti-passback
- Elevator floor control
- Report Wizard for customized reports
- Video cardholder verification
- User definable templates and badge designs
- Programmable logic controllers

* Features dependent on the individual DVR or V

