



R⁵ Visual Intelligence Software Suite

The March Networks™ R⁵ Visual Intelligence software provides system administrators, security investigators and supervisors, and appropriate third parties with intuitive, task-specific user interfaces and features for superior surveillance, investigations and operational efficiency



Key Features

R⁵ Visual Intelligence software provides:

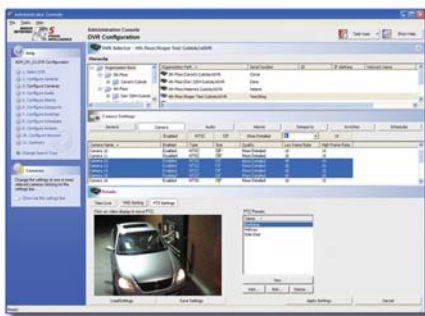
- Networked local and remote system control, scalable across 100's of locations and 1000's of cameras
- Centralized management of system software levels, user profiles and more
- Advanced health monitoring and maintenance tools, covering systems, hard-drives, cameras and video network infrastructure
- Options for outsourcing this health management directly to March Networks
- Targeted Investigator tools, including multiple Case management and evidence notation
- Case Management tools are integrated with graphical features for finding, refining and packaging video evidence rapidly
- Integrated ATM or POS transaction data, for more complete records
- Easy export of evidence to CD or flash media, including security seal' and automatic reviewing utility
- Value-added analytics utilities like People Counting for retailers
- Context-sensitive Help throughout, promoting user proficiency with minimal training
- Standard and Professional versions, matching functionality to users and needs

Targeted functions for intuitive user control

March Networks R⁵ Visual Intelligence Suite is an entirely new, innovative family of software for the evolving needs of system users in our financial and retail markets. This Suite provides a dramatic step forward in task-specific functionality and graphical interface design. It allows authorized system administrators, security and loss prevention investigators, management and other users anywhere on the network to work faster, more efficiently and more effectively.

Modular functionality begins with the **Installer Console**, included with every system to allow installers to verify all connections including camera position and focus. An 'always record' capability ensures nothing is missed even while the unit is being provisioned.

The **Administrator Console** allows security and IT staff to customize and maintain any number of systems, including software revisions, user profiles and more, in a local or centralized manner.



The **Evidence Manager** provides senior loss prevention, security or operations managers with the tools for building and managing their 'Cases'. Live or recorded video, interactive Case Notes, thumbnail previews and more equip these users to increase the speed and effectiveness with which they process evidence and resolve Cases. A **Professional** version adds valuable audio and transaction data, as well as synchronized playback and zoom control features.

The **Investigator** allows security, theft and fraud investigators to zero in quickly on the video evidence fundamental to their investigations. A component of the Evidence Manager, this tool is for staff dedicated to evidence searching and acquisition versus formal case construction. Graphical time/date search functions include thumbnail video previews and a powerful 'Refinement' feature for getting right to specific evidence. Again, a **Professional** version adds value through enhancements like searching on alarm, motion detection or transaction text.

And for enabling third parties such as law enforcement and other officials to leverage video evidence effectively, an auto-run copy of our **Evidence Reviewer** is included automatically when evidence is exported from our NVRs. This and all R⁵ Visual Intelligence software includes context-sensitive Help for rapid user control with minimal training.



Specifications

VISUAL INTELLIGENCE SOFTWARE SUITE

	INSTALLER CONSOLE	ADMINISTRATOR CONSOLE		INVESTIGATOR		EVIDENCE MANAGER		EVIDENCE REVIEWER
		Std ²	Ent ⁴	Std ²	Pro ³	Std ²	Pro ³	
Primary application	Initial system commissioning	System programming and maintenance	Extended programming and maintenance	Rapid video searching and packaging	Enhanced video retrieval	Multiple Case construction and management	Enhanced Case management capabilities	Evidence review by 3 rd parties
Testing of system default operation	✓							
Custom system programming & maintenance		✓	✓					
Multi-site mgmt. of system software, health & users		Programming & health only	Extensive control of all					
Video search c/w refinements & thumbnails				✓	✓	✓	✓	
Search using alarms, motion detection or transaction text					✓		✓	
Video playback				✓	✓	✓	✓	✓
Synchronized video playback							✓	
Audio playback					✓		✓	✓
Multi-window viewing						✓	✓	
Video authentication ¹				✓	✓	✓	✓	✓
Copy, save, export video evidence				✓	✓	✓	✓	
Evidence notation				✓	✓	✓	✓	✓
Parallel Case management						✓	✓	
Monitor video on alarms				✓	✓	✓	✓	
Real-time viewing				✓	✓	✓	✓	

Additional Feature Highlights

Recording Modes: Continuous, scheduled or driven by event - alarm, motion detection (with masking and sensitivity), ATM or POS transaction; configurable pre- and post-alarm recording

Video Search: Simultaneous across multiple cameras, using time/date (with time zone reference). With Professional version, using any captured event – alarm, motion detection (full view or masked), activity scan, ATM transaction with card number and amount, POS transaction with transaction number and amount

Display Modes: Single window in Standard version. With Professional version, quad playback using any combination of real-time, replay, on alarm, time/date, transaction

Video Export: To removable media (USB connected CD or memory stick), including auto-run Evidence Reviewer; export controlled remotely or automatically in response to events; export JPEG or BMP still images and authenticated¹ .AVI clips, with time/date stamp

Notes:

¹ SHA (Secure Hash Algorithm) of Digital Signature Standard [U.S. FIPS PUB 180-1, 1995].

² 'Standard', provided out of the box with each system shipment.

³ 'Professional', a chargeable upgrade with value-added feature content.

⁴ 'Enterprise', enabled when our multi-site, centralized Enterprise Service Manager is deployed.