

March Networks Command Lite



Command Lite is the free version of March Networks' video management platform. The software supports up to six channels of video and one week of recording, making it an ideal surveillance solution for smaller businesses, as well as larger organizations interested in assessing the capabilities of Command. It shares the same easy-to-use interface that distinguishes all Command software.



EXPERIENCE THE POWER OF COMMAND

March Networks Command™ Lite offers an intuitive user interface focused on functional tasks that allow administrators and users alike to manage their Command video surveillance network. You can open the unified client tool on any user workstation running a Windows® environment to view live and recorded video from March Networks IP cameras or any of the supported third-party cameras. The software can also be connected to hundreds of ONVIF S compliant IP edge devices.

ROCK-SOLID EVIDENCE AND LIGHTNING FAST INVESTIGATIONS

Command Lite delivers the tools you need to ensure the success of your investigations. Key features include thumbnail searching, smart search, and a visual finder bar that allow you to search for video quickly and easily without a specific date or time, and take advantage of synchronized video playback and multiple export. Additional capabilities monitor recording server and camera health status. These include

Command Lite's innovative Health Inbox and a Device Page complete with detailed information on the data being received, recorded and streamed to clients on a camera-by-camera basis.

QUICK AND EASY TO INSTALL

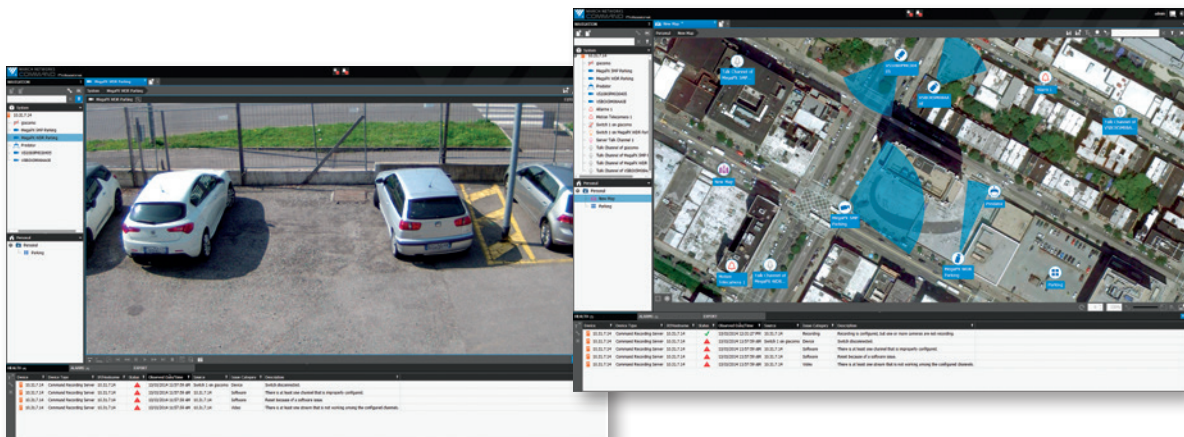
Downloadable directly from the March Networks website, Command Lite installs in minutes without any complex system setup. It features a six-step configuration wizard to discover, add and record cameras available on the network.

TRANSPARENT UPGRADE OPTIONS

Command Lite is ideal for security systems integrators and dealers that want to introduce March Networks Command to prospective customers. Medium to large-sized organizations can use Command Lite to evaluate the software before purchasing Professional or Enterprise versions. The software is also perfect for smaller businesses looking for a cost-effective but high-performing CCTV solution that can be easily upgraded to Command Professional or Enterprise at any time. Upgrades require no reconfiguration and all previously recorded video is maintained.

FEATURES

- PTZ control, including automatic presets and guard tours
- Advanced and intelligent recording (motion detection, pre-determined schedules)
- Smart search
- Synchronized audio and video playback
- Side-by-side live and archive viewing
- Graphical video timeline during playback
- Save and print snapshots
- Instant replay
- Standardized playback controls
- Video grids (views)
- Display different operations on different monitors
- Interactive mapping with convenient zoom and navigation features
- Intuitive six-step configuration wizard



COMMAND LITE SYSTEM REQUIREMENTS*

6 CAMERAS

Operating System (OS)	Microsoft® Windows 7, Windows 8, Windows 8.1, Windows Server 2008 R2, Windows Server 2012, Windows Server 2012 R2
Processor (CPU)	Dual core or greater processor (minimum)
HDD Space	25 GB (minimum). Separate disk/partition for video storage recommended.
Network Interface	Gigabit Ethernet
Memory	2 GB Minimum

COMMAND CLIENT(S)

Operating System (OS)	Microsoft Windows 7, Windows 8, Windows 8.1, Windows 10
Processor (CPU)	Dual core or greater processor (minimum)
Hard Drive Space	Up to 50 MB
Network Interface	Gigabit Ethernet
Memory	2 GB RAM minimum
Video Card	Any video card (128 MB per monitor minimum) capable of 24-bit color depth (true color)

Select the Command Solution that's Right for You

Features	Command Lite	Command Professional	Command Enterprise
Maximum Number of Cameras	6	128	128,000
Video Retention Time	Maximum 7 days	Unlimited	Unlimited
Maximum Number of Concurrent Connections	32	64	Unlimited
Device Discovery	•	•	•
ONVIF S and Third-Party Camera Support	•	•	•
Megapixel/HD Video Support	•	•	•
System Configuration and Management	•	•	•
Video Export (MP4, CME)	•	•	•
Edge Recording (March Networks Shadow Archiving™)	•	•	•
Motion Recording (Camera Dependent)	•	•	•

Consider upgrading to Command Professional or Command Enterprise

Command Lite can be easily upgraded to Command Professional or Enterprise at any time. Upgrades require no reconfiguration and all previously recorded video is maintained.

TECHNICAL SUPPORT

Technical support for Command Lite is provided through detailed and informative video tutorials and Frequently Asked Questions (FAQ) documents available on the March Networks website at marchnetworks.com.

* For updated System Requirements please refer to the Command Release Notes included in your download package