



Creativity Progress & Excellence
Network Product



Feature Guide for Series II & III *iMEGAPRO*:

Sense Up Plus:

Manufacturers have traditionally utilised frame integration technology to improve the low light performance in CCTV cameras. Whilst effective at producing a low light image, 'motion blur' is a common problem in areas with movement. Sense Up Plus utilises intelligent image signal processing with a highly sensitive CMOS sensor, AGC control and 3D noise reduction to provide the ultimate low light image without any 'motion blur' or noise.

Colour



Colour Sense Up Plus



HD Clarity



Quadruple Streaming:

Within the main profile four individual streams are available; two H.264 streams; one at 1080p resolution the other at 480p and two JPEG streams; 480p and CIF resolution respectively. Each can be set up to a maximum 30 FPS. The advantages are that each client can request a stream from the camera to suit its needs, for example the recording device could use the 1080p H.264 stream at 30 FPS, whilst mobile devices might connect to the JPEG CIF stream to save bandwidth and increase transmission speed.

Region of Interest (ROI):

A ROI is a designated area within each camera view. This can then be delivered to the recording device as an individual stream. For example; a shop counter (overall image) is streamed at 2 FPS whilst the ROI is zoomed into the till and streamed at 15 FPS giving faster updates of this sensitive area. E Tour: Digitally zoom and move around the camera image. Preset positions can be stored and a tour can then move around those preset positions as though it were a mechanical pan and tilt camera.

Weighted Mode:

Each stream has the option to be set to weighted mode. When enabled the stream will transmit at 1 FPS regardless of the programmed FPS. Upon an alarm the frame rate will increase to its programmed values. This optimises both hard drive recording space and bandwidth usage but still maintains continuous surveillance recording.

IR Illumination:

Already a leader in infrared integration, our expertise in this field has been applied to create the largest ranges of IR integrated IP cameras. IR LED illumination can be achieved for distances up to 60 Meters.

ONVIF:

LILIN were the first company in the world to produce a range of ONVIF compatible products. This enables our range of cameras to work with many Video Management Software solutions including, Milestone, Genetec, Axxon, Nuuo and GeoVision to name but a few.

Alarms can be activated using a number of modes:

Motion Detection:

Detects motion within a selected zone

Face Detection:

Detects a human face within a selected zone

Tamper Detection:

Detects changes in the camera image, such as spray painting, focus drift or the camera field of view moving

Audio Detection:

Activates an alarm if sound is detected (audio models only)

Other Features:

Privacy Masking:

8 privacy zones to block out parts of the video, ideal for applications such as chip and pin terminals

Power over Ethernet (PoE):

Enabling one cable solution for both power and video/data

Graphic User Interface (GUI):

iMEGAPRO II & III use the same user interface as LILINs 720p and 1.3 Megapixel IP camera range. This familiar and user friendly interface ensures smooth integration and quick configuration

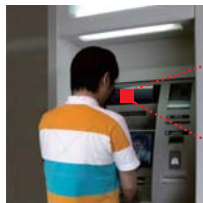
Motion Detection



Recording



Face Detection

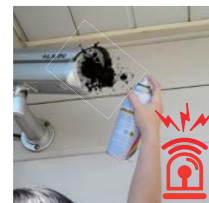


Detecting



Face

Tampering Detection



Alarm



Alarm



IPR722S

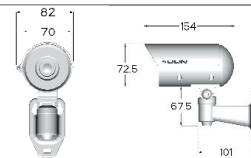
Day & Night 1080P HD IR IP Camera



Features

- Full HD 2 megapixel CMOS image sensor
- True H.264 AVC/MPEG-4 part 10 real-time video compression
- H.264 and Motion JPEG multi-profile video streaming
- 3D noise reduction (MCTF)
- 2D WDR function
- Digital PTZ supported
- Face / Tampering / Motion detection alarm function
- High efficiency IR LED, radiant distance up to 21m
- Day & Night (IR cut removable)
- ONVIF supported
- Support Sense Up + and Quadruple Streaming technologies

Dimensions



Body: 82mm(W) x 72.5mm(H) x 154mm(D)
Bracket: 101mm(L)
(Unit:mm)

IP CAMERA SERIES				
Day & Night 1080P HD IR IP Camera				
Model	IPR722S4.3	IPR722S6		
Lens	Focal Length	4.3mm	6mm	
	Iris	F1.6	F1.8	
	Angle of View	H	70°	49.3°
		V	51°	35.9°
D		89°	64.5°	
Pick Up Element	1/2.7" CMOS image sensor			
Effective Pixels	1920 (H) x 1080 (V) = 2,073,600 (pixel)			
Chip Size	5.856mm (H) x 3.276mm (V)			
Scanning System	Progressive Scan			
Infrared Cut Filter	Auto / Schedule / Day (Color) / Night (Mono)			
Min. Illumination	0.15 Lux at F1.6 (Low Light Mode) / 0 Lux with IR	0.18 Lux at F1.8 (Low Light Mode) / 0 Lux with IR		
White Balance	Auto / Tungsten / Indoor / Fluorescents1 / Fluorescents2 / Outdoor1 / Outdoor2			
Back Light Compensation	Off / On			
Electronic Shutter	1/30(25)s ~ 1/8000s			
Sense Up	Off / 1 Frame / 2 Frames / 3 Frames / 7 Frames			
Sense Up +	Yes			
Auto Gain Control	36 dB Variable Gain			
3D Noise Reduction	Off / 1 ~ 32 Selectable			
2D WDR	Off / On			
Privacy Masking	Off / On (4 zones)			
Image Effects	Brightness, Contrast, Hue, Saturation, Sharpness, Mirror, Flip			
IP Rating	IP66			
Window	Ø65 Heat Resistant Glass			
Infrared LED	Peak Wavelength	850nm		
	Beam Spread	30°		
	Radiant Distance	21M		
Operating Temperature	-35°C ~ +50°C (-31°F ~ 122°F)			
Dimension	Body : 82mm(W) x 72.5mm(H) x 154mm(D) / Bracket : 101mm(L)			
Weight	600g			
Power Supply	DC12V ±10%			
Power Consumption	10W			

NETWORK		
Video Compression	H.264 , Motion JPEG	
Resolution	1080P(1920 x 1080), 720P(1280 x 720), D1(720 x 480), CIF(352 x 240)	
Multiple profile	Profile #1	H.264 : up to 30 fps @ 1920 x 1080 , MJPEG : up to 30 fps @ 720 x 480
	Profile #2	H.264 : up to 30 fps @ 1280 x 720 , MJPEG : up to 30 fps @ 352 x 240
	Profile #3	H.264 : up to 30 fps @ 1920 x 1080 , MJPEG : up to 30 fps @ 1280 x 720
	Profile #4	H.264 : up to 30 fps @ 720 x 480 , MJPEG : up to 15 fps @ 1920 x 1080
Video Streaming	RTP/HTTP, RTP/TCP, RTP/UDP 128Kbps ~ 5Mbps	
Video Bitrate	Frame rate and bit rate controllable on-the-fly VBR / CBR / GOP supported	
Security	Base64 HTTP encryption Multiple user access levels with password protection 10 user accounts available	
Users	8 simultaneous users	
ePTZ & Digital Zoom	Yes, ROI is supported	
OSD	Text overlay for date, time, and camera name	
Alarm Functions	Image upload over FTP and E-mail by face / tampering / motion detection	
CPU, Memory	Embedded SoC ARM11, 528MHz, 256MB DDR2, 256MB flash memory	
Maintenance	Firmware update via HTTP Firmware available at web site	
Network Interface	10Mbps / 100Mbps Base-T, RJ-45	
PC Requirement	OS : Windows 2000, Windows XP, Windows Vista, Windows 7	
	Browser : Windows Internet Explorer 6, 7, 8	
	CPU : Intel Pentium 4 1.8GHz or above RAM : 1GB or above, Independent Display Card	
Network Protocols	IP, TCP, UDP, HTTP, SMTP, NTP, DDNS, UPnP, FTP, ARP, DHCP, PPPoE, DNS, RTSP, RTCP, Telnet, ONVIF	
Mobile Phone and PDA	iPhone, iPad, and Android support	
System Integration	ONVIF & LILIN HTTP API	
CMX	CMX HD 3.6 support	
Video Display	LILIN Universal ActiveX & LILIN Java Applet	
OS	Embedded Linux 2.6.32	