



DVR 316 / 308 /
304 Series

DVR Series

- Full D1 real-time H.264 .
- VGA outputs at 1920 * 1080i, built-in 3D intellectual motion adoptive refinement and vivid image enhancement engines.
- HTTP web-based interface including DVR configuration, PTZ control, playback, and live monitoring.
- Concurrent multiple channel playback for 16-channel.
- 3G mobile phone solutions provided.
- Resolution, frame rate, and video quality configurable for each channel.
- LCD Power saving design.





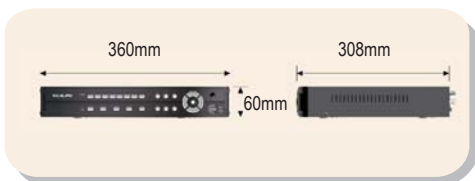
DVR316



Major Features

- H.264 Full D1 real-time.
- VGA outputs at 1920 * 1080i, built-in 3D intellectual motion adoptive refinement and vivid image enhancement engines.
- HTTP web-based interface including DVR configuration, PTZ control, playback, and live monitoring.
- Concurrent multiple channel playback for 16-channel.
- 3G mobile phone solutions provided.
- Resolution, frame rate, and video quality configurable for each channel.
- LCD Power saving design.

H.264	FTP	Mouse	GUI	Audio	USB
Internet	PIP	Mobile Remote Surveillance	Saving Power		



Specifications

	Specification
Model	DVR316
Recording	SATA HDD: internal * 2
Recording mode	External alarm / motion detection / schedule / manual
Video source	Analog * 16
Resolution	Full D1: 720 * 576 (PAL) 720*480 (NTSC) / CIF: 320 * 288 (PAL) 320 * 240 (NTSC)
Recording NTSC	D1 120 / CIF 480 FPS
Recording PAL	D1 100 / CIF 400 FPS
Schedule	7 day * 24 hrs time table, recording mode configurable
Backup	USB 2.0 flash disk / HTTP file download / Audio supported
DVD/RW	External USB DVD/RW
Playback	H.264 AVC video
Speed	FR: 2x, 4x, 6x / FF: 2x, 4x, 6x
Compression	H.264 AVC and JPEG
Video Input	Analog cameras
Camera Name	12 characters
Live video	PAL: 400 FPS/Sec NTSC: 480 FPS/Sec
VGA output	3D intellectual motion adoptive refinement with vivid image enhancement VGA engine up to 1920 * 1080i
Multiplexer	Sequence / digital zoom / freeze / PIP
Digital zoom	ROI for 5X and 9X with PIP at live and playback mode
Split screen	4, PIP
Spot monitor	Yes
Matrix	
Matrix	Control DVR and IP Fast Dome via TCP/IP by multiple keyboards
Management	
Reports	Full alarm, configuration, and operation reports exporting over HTTP or USB
Authentication	User authentication with feature configurable
Alarm/event	D1 * 8 and D0 * 2 (NO/NC)
Motion	Motion grid 44*36 each channel, 8 sensitivities
Event	External alarm, video loss, stop recording, power recovering, motion detection, schedule, logon, HDD format
Email	Alarm notification with JPEG attachments
Accessories	Remote controller addressable up to 255 DVRs
P/T/Z protocol	LILIN MLP2 and Pelco RS-485
Keyboards	PIH-931 keyboard
IR receiver	Extra IR extension connector, up to 200 m
Mouse	USB / PS-2, drag-n-drop, right-mouse-click, mouse wheel.
Audio	G.711 audio, 0.7Vp-p, 300 Hz to 3KHz
Audio In/out	RCA 4 in , 1 output
Remote control	Yes
Network	Direct Internet browser access / multiple users access
Protocols	ARP / TCP/IP / UDP / HTTP / SMTP / FTP / DDNS / PPPoE / DynDNS / NTP
Web	Live / event log & time search playback / AVI / snapshot
DVR status	HTML DVR status
IPScan	IPScan supported, easy-to-setup for IP address
Software	
BackupManager	Multiple DVRs FTP file download and multi-channel playback
Mobile phone	Java J2ME phone, BlackBerry, iPhone, and Windows Mobile phone supported
Others	
WDT	Hardware watchdog timer
DST	Daylight saving time
Multilanguage	English, Chinese, Spanish, Danish, Swiss, Norwegian, Arabic, Japanese, German, French, Polish, Portuguese, Simplified Chinese, Vietnamese, Italian
CPU/OS	32-bit RISC Processor, ARM926 SoC 336 MHz, Linux 2.6 kernel
Power	DC 12V, 4.2A, 48W
Working Env.	Temp: 0°C ~ +50°C / Humidity: 0%-80%
Dimension	360mm * 60mm * 308mm
Weight	3.0 Kg

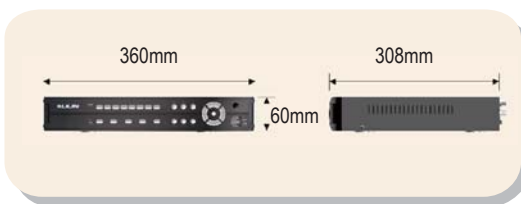
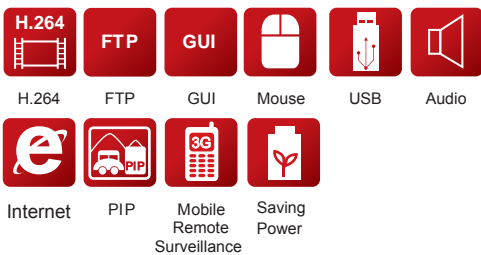


DVR308



Major Features

- H.264 Full D1 real-time.
- VGA outputs at 1920 * 1080i, built-in 3D intellectual motion adoptive refinement and vivid image enhancement engines.
- HTTP web-based interface including DVR configuration, PTZ control, playback, and live monitoring.
- Concurrent multiple channel playback for 8-channel.
- 3G mobile phone solutions provided.
- Resolution, frame rate, and video quality configurable for each channel.
- LCD Power saving design.



Specifications

	Specification
Model	DVR308
Recording	SATA HDD: internal * 2
Recording mode	External alarm / motion detection / schedule / manual
Video source	Analog * 8
Resolution	Full D1: 720 * 576 (PAL) 720*480 (NTSC) / CIF: 320 * 288 (PAL) 320 * 240 (NTSC)
Recording NTSC	D1 120 / CIF 240 FPS
Recording PAL	D1 100 / CIF 200 FPS
Schedule	7 day * 24 hrs time table, recording mode configurable
Backup	USB 2.0 flash disk / HTTP file download / Audio supported
DVD/RW	External USB DVD/RW
Playback	H.264 AVC video
Speed	FR: 2x, 4x, 6x / FF: 2x, 4x, 6x
Compression	H.264 AVC and JPEG
Video Input	Analog cameras
Camera Name	12 characters
Live video	PAL: 200 FPS/Sec NTSC: 240 FPS/Sec
VGA output	3D intellectual motion adoptive refinement with vivid image enhancement VGA engine up to 1920 * 1080i
Multiplexer	Sequence / digital zoom / freeze / PIP
Digital zoom	ROI for 5X and 9X with PIP at live and playback mode
Split screen	4, PIP
Spot monitor	Yes
Matrix	
Matrix	Control DVR and IP Fast Dome via TCP/IP by multiple keyboards
Management	
Reports	Full alarm, configuration, and operation reports exporting over HTTP or USB
Authentication	User authentication with feature configurable
Alarm/event	DI * 8 and DO* 2 (NO/NC)
Motion	Motion grid 44*36 each channel, 8 sensitivities
Event	External alarm, video loss, stop recording, power recovering, motion detection, schedule, logon, HDD format
Email	Alarm notification with JPEG attachments
Accessories	Remote controller addressable up to 255 DVRs
P/T/Z protocol	LILIN MLP2 and Pelco RS-485
Keyboards	PIH-931 keyboard
IR receiver	Extra IR extension connector, up to 200 m
Mouse	USB / PS-2, drag-n-drop, right-mouse-click, mouse wheel.
Audio	G.711 audio, 0.7Vp-p, 300 Hz to 3KHz
Audio In/out	RCA 4 in , 1 output
Remote control	Yes
Network	
Protocols	Direct Internet browser access / multiple users access
Web	ARP / TCP/IP / UDP / HTTP / SMTP / FTP / DDNS / PPPoE / DynDNS / NTP
DVR status	Live / event log & time search playback / AVI / snapshot
IPScan	HTML DVR status
IPScan	IPScan supported, easy-to-setup for IP address
Software	
BackupManager	Multiple DVRs FTP file download and multi-channel playback
Mobile phone	Java J2ME phone, BlackBerry, iPhone, and Windows Mobile phone supported
Others	
WDT	Hardware watchdog timer
DST	Daylight saving time
Multilanguage	English, Chinese, Spanish, Danish, Swiss, Norwegian, Arabic, Japanese, German, French, Polish, Portuguese, Simplified Chinese, Vietnamese, Italian
CPU/OS	32-bit RISC Processor, ARM926 SoC 336 MHz, Linux 2.6 kernel
Power	DC 12V, 4.2A, 48W
Working Env.	Temp: 0°C ~ +50°C / Humidity: 0%~80%
Dimension	360mm * 60mm * 308mm
Weight	3.0 Kg

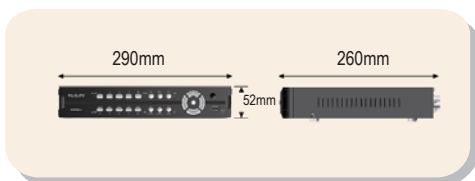
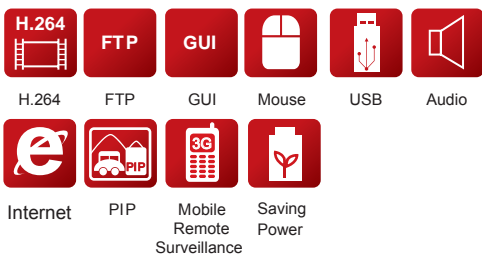


DVR304



Major Features

- Full D1 real-time H.264 recording and playback.
- VGA outputs at 1920 * 1080i, built-in 3D intellectual motion adoptive refinement and vivid image enhancement engines.
- HTTP web-based interface including DVR configuration, PTZ control, playback, and live monitoring.
- Concurrent multiple channel playback for 4-channel.
- 3G mobile phone solutions provided.
- Resolution, frame rate, and video quality configurable for each channel.
- LCD Power saving design.



Specifications

	Specification
Model	DVR304
Recording	SATA HDD: internal * 1
Recording mode	External alarm / motion detection / schedule / manual
Video source	Analog * 4
Resolution	Full D1: 720 * 576 (PAL) 720*480 (NTSC) / CIF: 320 * 288 (PAL) 320 * 240 (NTSC)
Recording NTSC	D1 120 / CIF 120 FPS
Recording PAL	D1 100 / CIF 100 FPS
Schedule	7 day * 24 hrs time table, recording mode configurable
Backup	USB 2.0 flash disk / HTTP file download / Audio supported
DVD/RW	External USB DVD/RW
Playback	H.264 AVC video
Speed	FR: 2x, 4x, 6x / FF: 2x, 4x, 6x
Compression	H.264 AVC and JPEG
Video Input	Analog cameras
Camera Name	12 characters
Live video	PAL: 100 FPS/Sec NTSC: 120 FPS/Sec
VGA output	3D intellectual motion adoptive refinement with vivid image enhancement VGA engine up to 1920 * 1080i
Multiplexer	Sequence / digital zoom / freeze / PIP
Digital zoom	ROI for 5X and 9X with PIP at live and playback mode
Split screen	4, PIP
Spot monitor	No
Matrix	
Matrix	No
Management	
Reports	Full alarm, configuration, and operation reports exporting over HTTP or USB
Authentication	User authentication with feature configurable
Alarm/event	D1 * 4 and DO * 2 (NO/NC)
Motion	Motion grid 44*36 each channel, 8 sensitivities
Event	External alarm, video loss, stop recording, power recovering, motion detection, schedule, logon, HDD format
Email	Alarm notification with JPEG attachments
Accessories	Remote controller addressable up to 255 DVRs
P/T/Z protocol	LILIN MLP2 and Pelco RS-485
Keyboards	None
IR receiver	None
Mouse	USB / PS-2, drag-n-drop, right-mouse-click, mouse wheel.
Audio	G.711 audio, 0.7Vp-p, 300 Hz to 3KHz
Audio in/out	RCA 1 in, 1 output
Remote control	Yes
Network	Direct Internet browser access / multiple users access
Protocols	ARP / TCP/IP / UDP / HTTP / SMTP / FTP / DDNS / PPPoE / DynDNS / NTP
Web	Live / event log & time search playback / AVI / snapshot
DVR status	HTML DVR status
IPScan	IPScan supported, easy-to-setup for IP address
Software	
BackupManager	Multiple DVRs FTP file download and multi-channel playback
Mobile phone	Java J2ME phone, BlackBerry, iPhone, and Windows Mobile phone supported
Others	
WDT	Hardware watchdog timer
DST	Daylight saving time
Multilanguage	English, Chinese, Spanish, Danish, Swiss, Norwegian, Arabic, Japanese, German, French, Polish, Portuguese, Simplified Chinese, Vietnamese, Italian
CPU/OS	32-bit RISC Processor, ARM926 SoC 336 MHz, Linux 2.6 kernel
Power	DC 12V, 4.2A, 48W
Working Env.	Temp: 0°C ~ +50°C / Humidity: 0%~80%
Dimension	290 mm * 52mm * 260mm
Weight	1.5 Kg



DVR SERIES

DVR 316 / 308 / 304 SERIES

File Backup

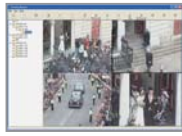
- USB flash disk • USB DVD/RW
- File for FTP / HTTP download • Play H.264 Files



DVD / RW

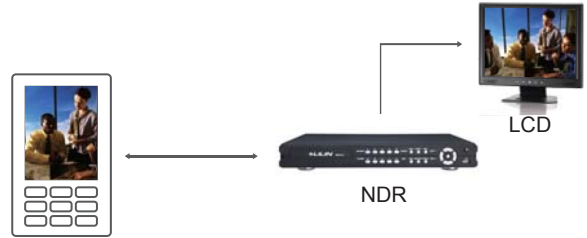


USB 2.0 connector



Play H.264 Files

3G mobile phone solution



VGA outputs 1920x1080i

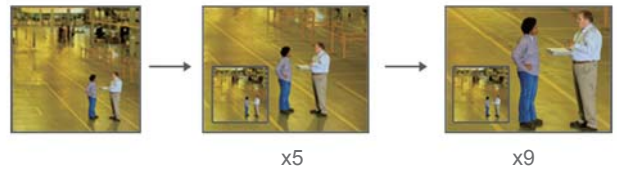


VGA

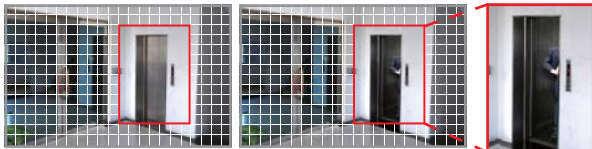


1920x1080i

ROI is support at 5X and 9X zoom with PIP for view



Motion Detection Recording



Recording

Power Saving design



Setup the time you want , Saving power 20% UP

Free CMX

Remote Device Manager



- Remote alarm setup
- Remote device setup
- Remote device status

eMap Manager



- eMap
- Live monitoring alarm triggering
- Alarm snapshots
- Device find
- PTZ control

NVR Central



- H.264 AVC full D1/HD recording
- User access level
- Group monitoring
- Smart search
- PTZ control
- Audio monitoring

Database Manager



- Event and alarm management
- Network status report
- Database maintenance
- Database import & export
- Reports

Web Browser

