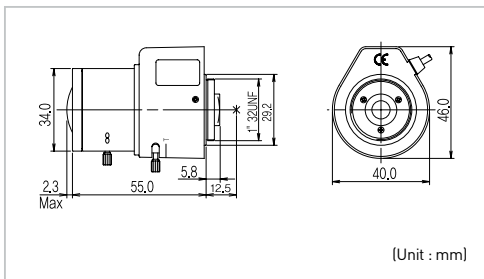


# KL-416D | VARIFOCAL LENS



## Outward Appearance



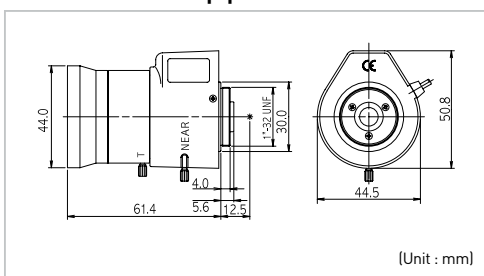
## Specifications

General Spec		KL-416D			
CCD Type	1/3"				
Focal Length	4.0 ~ 16.0mm				
Lens Mount	CSMount				
MaxAperture Ratio	1 : 1.4 ~ 360				
Iris	Auto Iris				
Rear Focal Length	7.0 ~ 16.2mm				
Flange Back Length	12.5mm				
Angle of View	D	1/3"	1/4"	79.3° ~ 22.2°	
	H			65.4° ~ 17.8°	
	V			49.6° ~ 13.3°	
Operation	Iris	Auto(F1.4 ~ 360)			
	Focus	Manual			
	Zoom	Manual			
Operating Voltage	Open	4.0V			
	Close	0.5V			
Operating Temperature	-20°C ~ +50°C				
Dimension	57.3(L) × 40(W) × 46(H)				
Weight	67g				

# KL-550D | VARIFOCAL LENS



## Outward Appearance



## Specifications

General Spec		KL-550D			
CCD Type	1/3"				
Focal Length	5.0 ~ 50.0mm				
Lens Mount	CS Mount				
MaxAperture Ratio	1 : 1.7 ~ 360				
Iris	Auto Iris				
Rear Focal Length	7.6 ~ 11.0mm				
Flange Back Length	12.5mm				
Angle of View	D	1/3"	1/4"	64.2° ~ 6.9°	
	H			51.7° ~ 5.5°	
	V			38.9° ~ 4.1°	
Operation	Iris	Auto(F1.7 ~ 360)			
	Focus	Manual			
	Zoom	Manual			
Operating Voltage	Open	4.0V			
	Close	0.5V			
Operating Temperature	-20°C ~ +50°C				
Dimension	61.5(L) × 44.5(W) × 50.8(H)				
Weight	140g				