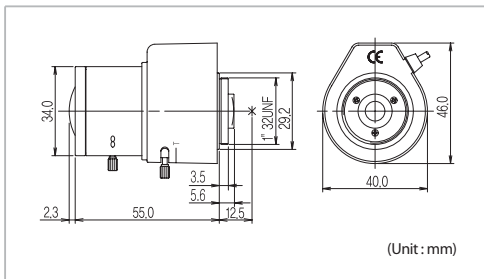


KL-42155D IR

VARIFOCAL LENS



Outward Appearance



Specifications

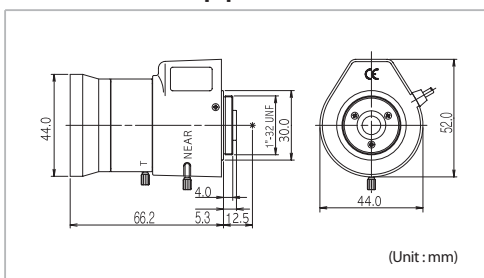
General Spec		KL-42155D IR			
Focal Length		4.2 ~ 15.5mm			
Mount		CS (1"-32 UNF)			
Max. Aperture Ratio		1 : 1.4 ~ 360			
Max. Image Format (H X V)		4.8 X 3.6			
Effective Lens Aperture	Front	Ø22.0mm			
	Rear	Ø8.0mm			
Back Focal Length		7.0 ~ 16.2mm			
Flange Back Length		12.5mm			
Angle of View	D		76.2° ~ 22.9°	1/4"	58.7° ~ 17.2°
	H	1/3"	62.5° ~ 18.3°		47.2° ~ 13.8°
	V		47.2° ~ 13.8°		35.5° ~ 10.3°
Object Size at 50cm (H X V)	4.2mm	1/3"	60.6 X 43.7cm	1/4"	43.7 X 32.0cm
	15.5mm		16.1 X 12.1cm		12.1 X 9.0cm
Iris Coil	Drive	190Ω			
	Control	700Ω			
Operation	Iris	Auto (F1.4 ~ 360)			
	Focus	Manual			
	Zoom	Manual			
Operating Voltage	Open	4.0V			
	Close	0.5V			
Operating Temperature		-10°C ~ +50°C			
Dimensions (L X W X H)		57.3 X 40 X 46			
Weight		67g			

KL-550D IR

VARIFOCAL LENS



Outward Appearance



Specifications

General Spec		KL-550D IR			
Focal Length		5.0 ~ 50mm			
Mount		CS (1"-32 UNF)			
Max. Aperture Ratio		1 : 1.4 ~ 360			
Max. Image Format (H X V)		4.8 X 3.6			
Effective Lens Aperture	Front	Ø37.7mm			
	Rear	Ø10.0mm			
Back Focal Length		7.6 ~ 11.5mm			
Flange Back Length		12.5mm			
Angle of View	D		65.7° ~ 7.2°	1/4"	49.5° ~ 5.4°
	H	1/3"	52.7° ~ 5.7°		39.6° ~ 4.3°
	V		39.6° ~ 4.3°		29.8° ~ 3.2°
Object Size at 50cm (H X V)	5mm	1/3"	49.5 X 36.0cm	1/4"	36.0 X 26.6m
	50mm		5.0 X 3.8cm		3.8 X 2.8cm
Iris Coil	Drive	190Ω I			
	Control	700Ω			
Operation	Iris	Auto (F1.4 ~ 360)			
	Focus	Manual			
	Zoom	Manual			
Operating Voltage	Open	4.0V			
	Close	0.5V			
Operating Temperature		-10°C ~ +50°C			
Dimensions (L X W X H)		66.2 X 44.5 X 50.8			
Weight		157g			