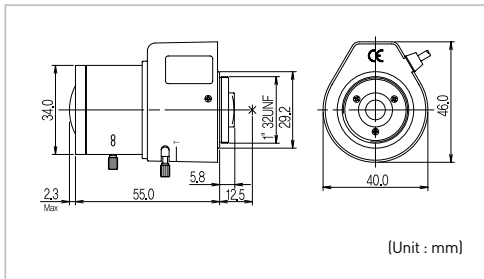


# KL-2810D | VARIFOCAL LENS



## ■ Outward Appearance



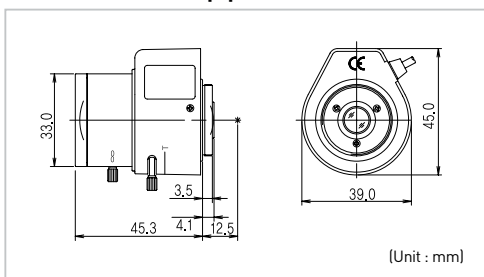
## ■ Specifications

General Spec		KL-2810D					
CCD Type	1/3"						
Focal Length	2.8~10.0mm						
Lens Mount	CS Mount						
MaxAperture Ratio	1 : 1.4 ~ 360						
Iris	Auto Iris						
Rear Focal Length	7.8 ~ 17mm						
Flange Back Length	12.5mm						
Angle of View	D	1/3"	115.8° ~ 35.3°	1/4"	87.9° ~ 26.5°		
	H					93.7° ~ 28.3°	70.6° ~ 21.2°
	V					70.6° ~ 21.2°	52.9° ~ 15.9°
Operation	Iris	Auto(F1.4 ~ 360)					
	Focus	Manual					
	Zoom	Manual					
Operating Voltage	Open	4.0V					
	Close	0.5V					
Operating Temperature	-20°C ~ +50°C						
Dimension	57.2(L) × 40.0(W) × 46.0(H)						
Weight	65g						

# KL-3580D | VARIFOCAL LENS



## ■ Outward Appearance



## ■ Specifications

General Spec		KL-3580D					
CCD Type	1/3"						
Focal Length	3.5~8.0mm						
Lens Mount	CS Mount						
MaxAperture Ratio	1 : 1.4 ~ 360						
Iris	Auto Iris						
Rear Focal Length	8.4 ~ 14.2mm						
Flange Back Length	12.5mm						
Angle of View	D	1/3"	101.7° ~ 44.3°	1/4"	76.2° ~ 33.2°		
	H					80.7° ~ 35.4°	60.5° ~ 26.5°
	V					60.0° ~ 26.5°	45.0° ~ 19.8°
Operation	Iris	Auto (F1.4~360)					
	Focus	Manual					
	Zoom	Manual					
Operating Voltage	Open	4.0V					
	Close	0.5V					
Operating Temperature	-20°C ~ +50°C						
Dimension	45.3(L) × 39.0(W) × 45.0(H)						
Weight	57g						