

The SM-1



Self-contained stand-alone keypad entry system for 1 or 2 doors

Secure and simple to install, the StrikeMaster provides self contained access control for those one or two door applications. The StrikeMaster is a cost effective way to provide robust high security keypad entry.

Vandal resistant, outdoor use

Constructed to withstand hard use and abuse the keypads can be installed in unsupervised and exposed outdoor installations. The StrikeMaster has already proven itself in military, industrial and public environments.

Two door strike outputs

A single StrikeMaster can control 2 different door strikes. The door strikes are activated for a definable unlock time. A simple command can also unlock the door for an indefinite time.

Store 50 user codes

The StrikeMaster can store 50 different user Personal Identification Number (PIN) and each PIN can be programmed to allow to one or two normally locked doors. The codes can be 4, 5, or 6 digits long.

Door monitoring

In a single door application, the second door output can provide forced door alarm, tamper and duress alarm output.

Features

- Up to 50 user codes
- 4, 5 or 6 digit codes
- One or two-door control
- Anti-tamper alarm
- Duress support
- Timed or latched release
- Fail safe or fail secure operation
- Bad code timed lock-out
- Hidden PIN feature
- Exit detector or button support
- LED and audible tone status indication
- All weather resistant
- Quick and easy to install
- Includes mounting hardware
- Powered AC or DC

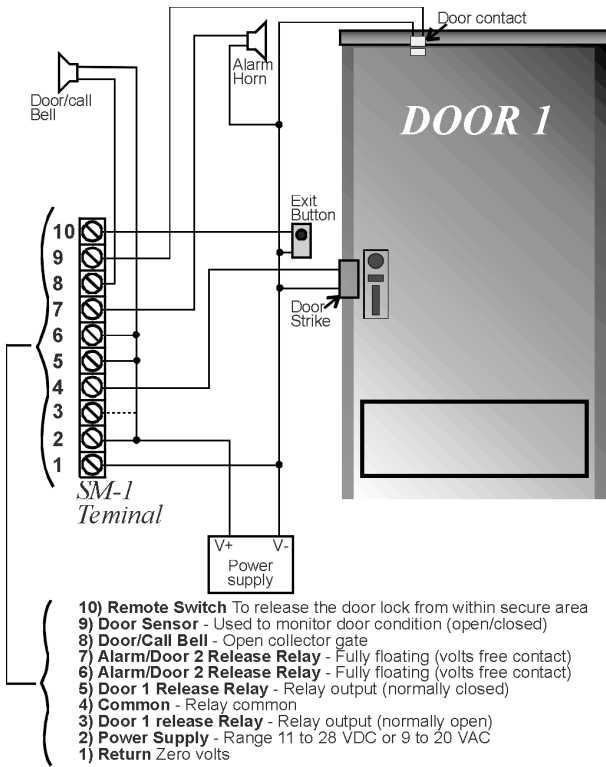
StrikeMaster is trademarks of Keymat Technology LTD™

Technical Specifications

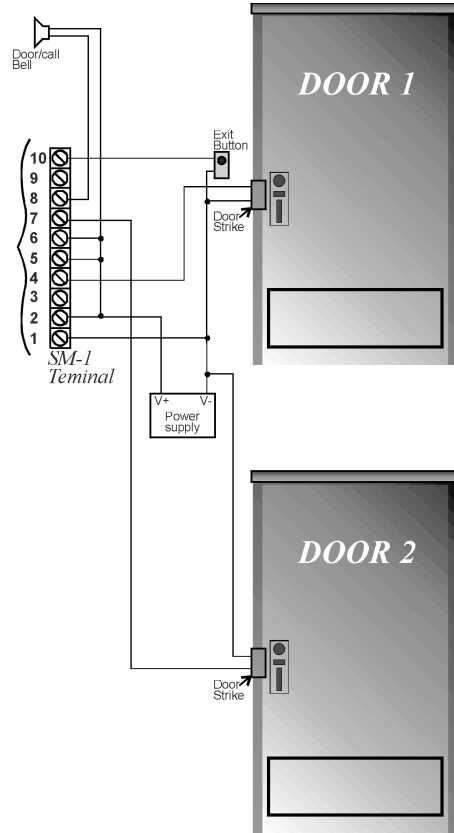
Power.....	11 to 28 VDC or 9 to 20 VAC
Key life.....	More than 4 million, Storm switching technology
Operating temperature.....	-20°C to 70°C (-5°F to 158°F)
Key top construction.....	Chrome zinc, silver color
Legends.....	Permanent engraving in black
Resistance to static discharge.....	More than 12.5KV
Size (H,W,D).....	11.8 x 9.95 x 3.3 cm (4.64 x 3.9 x 1.3")
Mounting.....	Surface mount or on provided surface mount box.
Weight.....	0.4 Kg (1 lbs)
Certification.....	CE

Wiring Diagram

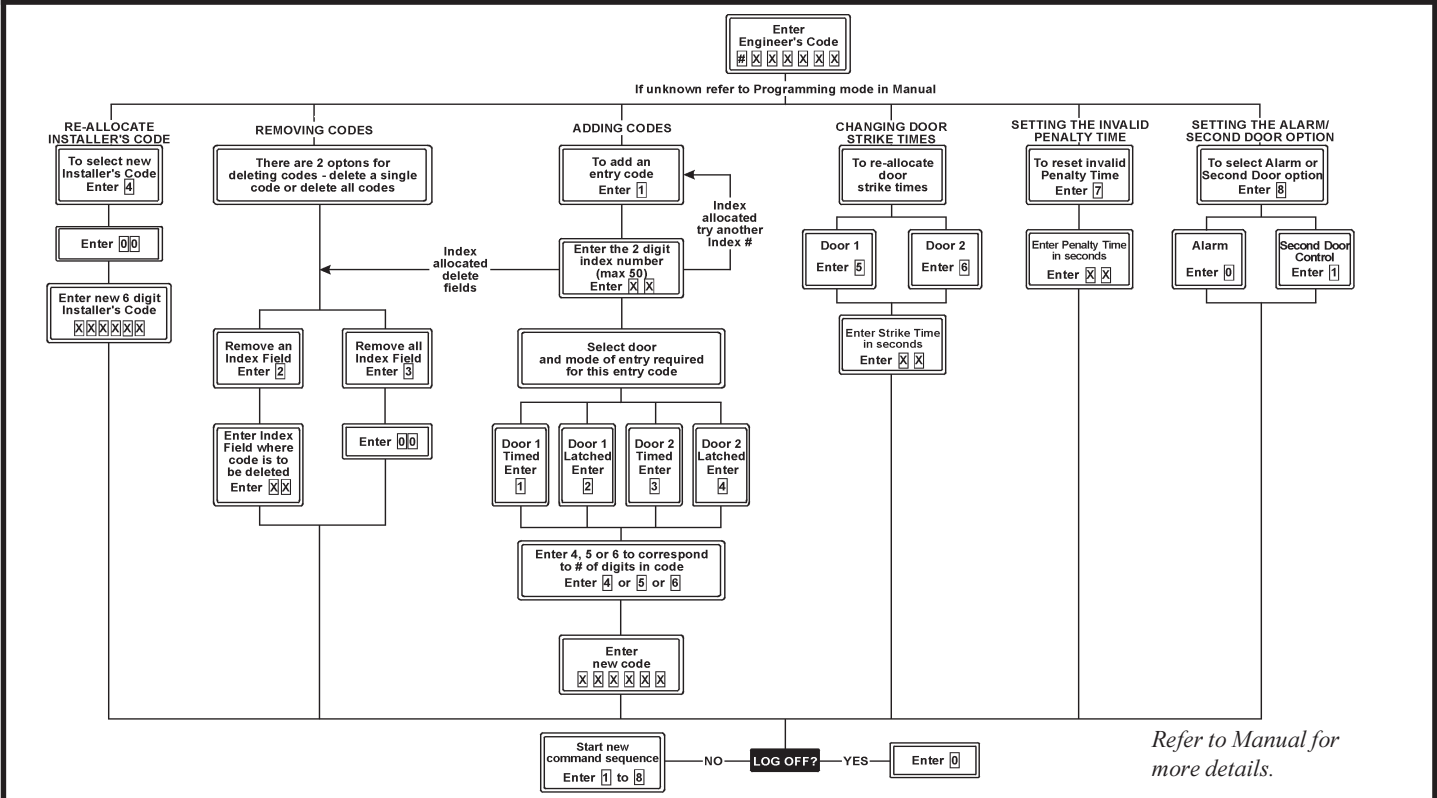
Wiring diagram with one door



Wiring diagram with two doors



Summary Chart



CS1126EN-9806