

EntraPass™ Corporate Edition

High Performance Access Control and Integrated Security System

Network Ready

The EntraPass Corporate Edition system architecture supports connections to remote sites using TCP/IP (communication servers) or dial-up modems.

Enhanced Video Integration

New video integration capabilities between EntraPass and the Intellex® Digital Video Management System dramatically increase security by allowing visual observations of monitored areas and allowing security personnel to link an access control event to a video clip directly from their access control application.

Visual Diagnostics

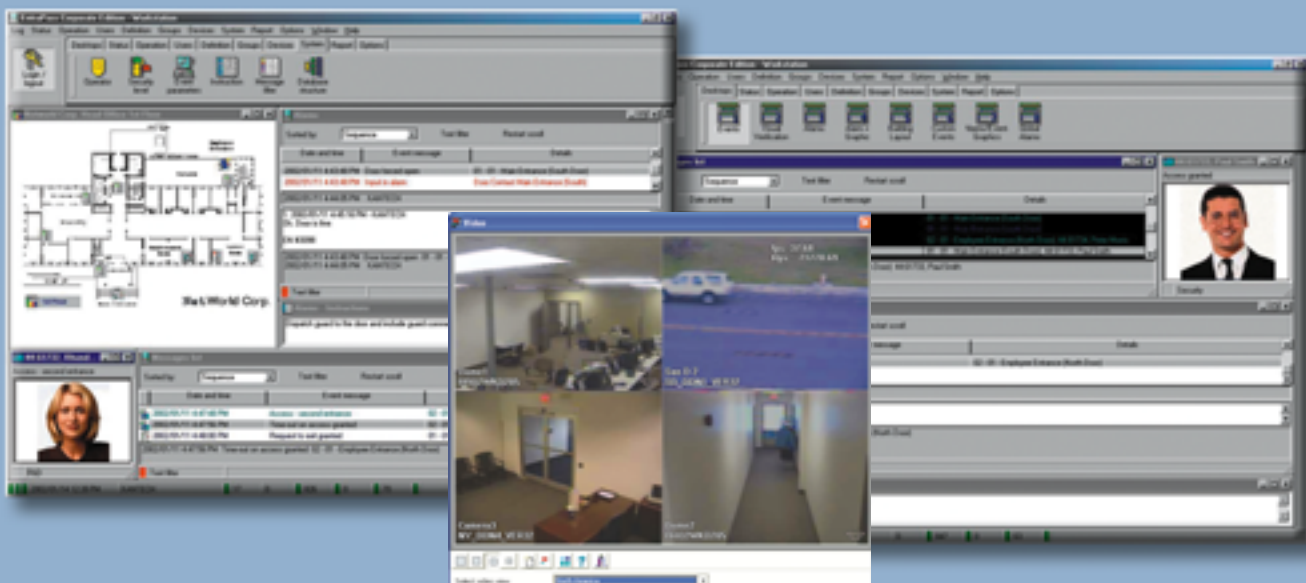
Visual Diagnostics allow viewing of graphical representations of door controller status in real time. This valuable tool displays component status by controller.

Interactive Floor Plans

EntraPass Corporate Edition imports and displays high-resolution graphics created on CAD-type systems, allowing you to design a graphics-based system that operators can use with minimal training. Interactive icons can be added to floor plans to display component status as well as offer full manual operation of the component in real time.

Express Setup

Express Setup automatically defines all the necessary system components. This innovative feature reduces the time required to configure the system and eliminates programming errors.



EntraPass™ Corporate Edition

EntraPass Corporate Edition, a powerful, multi-user access control system, provides the features required even in the most demanding applications. The software adapts easily to meet the needs of small to growing businesses, allowing users to manage one building or access multiple remote sites from a network.

Configurable Desktops per Operator

Each operator can be assigned up to eight configurable desktops. These desktops display selected windows featuring message events, user photos, filtered events, alarm instructions, high-resolution graphics and global alarms. Desktops can contain any combination of windows.

SmartLink™ for Simple System Integration

The SmartLink function allows real-time interfacing with most intelligent devices such as CCTV multiplexers, paging systems, HVAC systems, etc., by using an RS-232 or network connection between the system and the third-party device.

SmartLink for Advanced System Integration

Advanced system integration can be accomplished by using the bi-directional SmartLink to communicate with software applications such as Time and Attendance systems, Badging systems, Human Resource Management systems, Student Registration systems, etc., through TCP/IP, an RS-232 port or with DLLs. This allows complete and real-time data exchanges between systems, eliminating redundant data entry.

Alarm System Interface

An external alarm system can easily be integrated with EntraPass Corporate Edition. Arm and disarm the system by presenting a valid card to a designated reader.

Enhanced Video Integration

Integration with American Dynamics' Intellex digital video management system through the powerful Intellex Application Programming Interface (API) provides real-time video monitoring as well as video playback. Video can be linked to access events and recorded from one to sixteen cameras from different Intellex units simultaneously. Presets, sequences, dome control and 1x1, 2x2, 3x3, and 4x4 views are available through the EntraPass software. All cameras can be called up directly from a floor plan simply by double-clicking on the camera or dome icon. The video integration feature requires an Intellex digital video management system¹ and compatible cameras.

EntraPass Video Vault™ Option

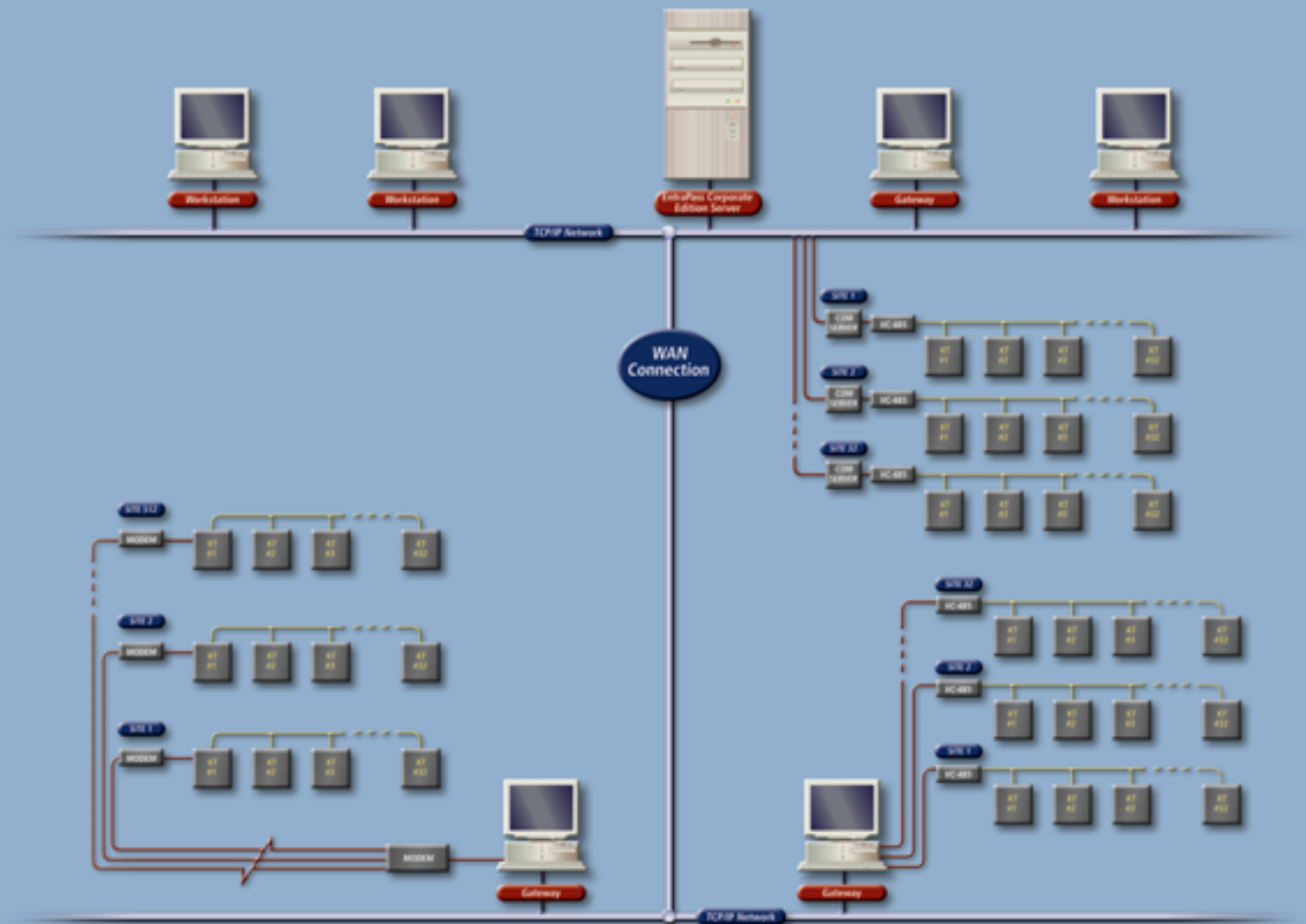
EntraPass Video Vault enables all video clips from an Intellex¹ alarm or EntraPass video alarm to be automatically stored as .AVI files or Kantech Video Intellex (.KVI) and Kantech Video Archive (.KVA) which can be password protected. Each EntraPass Video Vault may be connected to as many Intellex units as defined within the EntraPass software. Video may be saved to up to 24 pre-programmed hard drive locations. A .bmp image may be associated automatically with each video clip, and a thumbnail image may be created of the first frame of the video clip.

Other Features

- Automated e-mails (SmartLink)
- Bilingual by Operator
- DayPass
- Integrated Badging
- Elevator Control
- Supports up to 20 Workstations
- Redundancy Server
- Supports More than 100,000 Readers
- Remote Site Management
- Automated System Back-up
- Oracle/MS-SQL HR Interface
- Time and Attendance Reporting

¹v3.1 or higher

System Architecture



Gateway Compatible Loop Converters:

VC-485: RS-232 to RS-485

USB-485: USB to RS-485

EntraPass™ Corporate Edition

System Features

Remote Communication Capability	Visual Diagnostics
Up to 20 Workstations	Elevator Control
More than 100,000 Readers	Badging
SmartLink™ Interface	Remote Site Management
Interactive Floor Plans	Time and Attendance Reporting

System Capacities

Cards	Unlimited
Card families or site codes	Unlimited
Door controllers	17,408 per gateway
Card readers	34,816 per gateway
Keypads	34,816 per gateway
Monitored points (inputs)	278,528 (KT-300)
Auxiliary outputs for reader LEDs and door alarms	278,528 (KT-300)
Elevator floors per cab	64
Card user access levels	250 per site
Access level combinations	Unlimited
Schedules of 4 time zones each	100
Holidays	366 per system
Operator workstations	20
Gateways	40
System operator passwords	Unlimited
Operator security levels	Unlimited
Concurrent operator languages	2
Number of printers	1 per workstation
Serial Port / USB	Max. 32 per gateway
Dial-up sites	Max. 512 per gateway

Computer Requirements

(Workstation, Gateway and Server)

Minimum processor	Pentium III 800 MHz
Minimum RAM recommended	256 MB
Minimum free hard disk space recommended for software	4 GB
Color depth	24-Bit (16 million colors)
Network interface card	100Base-T network adaptor
Operating system compatibility	Windows™ 98/XP/NT/2000/2003

Ordering Information

Package Includes:

License for EntraPass Corporate Edition software which enables one server workstation and two additional workstations, plus a Corporate Gateway and CBLK-10 cable kit.

- E-COR-EN:** Includes above with English manual
- E-COR-SP:** Includes above with Spanish manual
- E-COR-FR:** Includes above with French manual

Manuals Only:

- E-COR-MAN-EN:** English
- E-COR-MAN-SP:** Spanish
- E-COR-MAN-FR:** French

Accessories:

- E-COR-WS6:** License for six additional workstations
- E-COR-COM:** License for 40 Corporate Gateways
- E-COR-VVM:** License for one EntraPass Video Vault
- E-COR-RDN:** License for one Redundancy Server
- E-COR-SQL:** License for one Card Gateway (Oracle/MS-SQL HR interface)



Import High-Resolution Graphics



Historical Reports
Extensive reporting with customizable filters



Acknowledgment Required
Event acknowledgment pop-up window