



KABA®

Flexible access control for all enterprises

Building access and workforce management



Kaba have for over 100 years been providing solutions of quality from simple locking systems to complex electronic access and workforce management solutions.

We understand the complex problems that managing the access of large and small businesses or organisations can bring.

- Who should have access to where and at what times?
- Who is on site in an emergency?
- How do I manage my visitors? Where are they, and who do they visit?
- How do I manage my car park?
- What time and for how long are my people working?
- How do I integrate this system with my Building Management, HR, or other corporate management systems?

We understand your requirements and through our dedicated team of experienced consultants, we can develop cost effective and efficient solutions that solve your everyday access and organisational problems. Our customer base comprises a variety of business sectors.

Manufacturing
Public sector
Health
Finance

Aerospace & Defence
Food and Drink
Education
Telecoms

Functionality based on experience

Kaba's Exos 9300 is a networked access control and time & attendance system based on the latest IT and business standards.

The system is approved by all types of different users: Security, Building Management, IT, HR, Health and Safety, and the End Users. Its broad functionality includes:

- Staff & visitor management
- Control of online and standalone access points.
- Presence reporting
- Tenant management
- Alarm management
- Car park management
- Image verification
- Time and attendance
- Employee self service (ESS)
- Integration with ERP, HR and Building Management systems. i.e. SAP, Oracle, OPC interface etc

The software links with many other enterprise applications to provide a totally seamless solution. It also supports any card format, PIN codes and biometrics identification, and provides a complete audit trail and reporting structure.

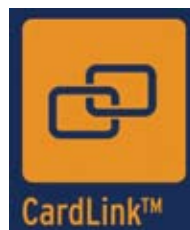
CardLink™

Kaba Exos 9300 allows an organisation to control both fully online (cabled) and standalone (uncabled) doors from within one access control software solution. The link between the online and offline doors is the Legic RFID card.

Using access profiles and 'time limited' validation, the standalone doors can have the near control and security of online controlled doors.

This means you have the opportunity to have cost effective and flexible access control on any door, barrier, lift or access point.

Take a look at how this can help your organisation.



Features & Benefits of Exos 9300 at a glance



Access Control

enabling control over who should have access to where and at what times with a full record of all personnel movements.



Visitor management

allowing pre-booking to reduce administration and improve health and safety.



Staff management

to maximise security and control who goes where, temporary access and disabling of badges, in-car gate control.



Parking management

for efficient use of parking spaces and barrier control.



Tenant management

ensuring control over multi-business occupancy of one building.



Card Link *just link it™*

to remotely manage access to standalone doors as well as networked doors through cards.



Employee self service (ESS)

to give staff the ability to control time & attendance, booking holidays or signing-in visitors.



Time and Attendance

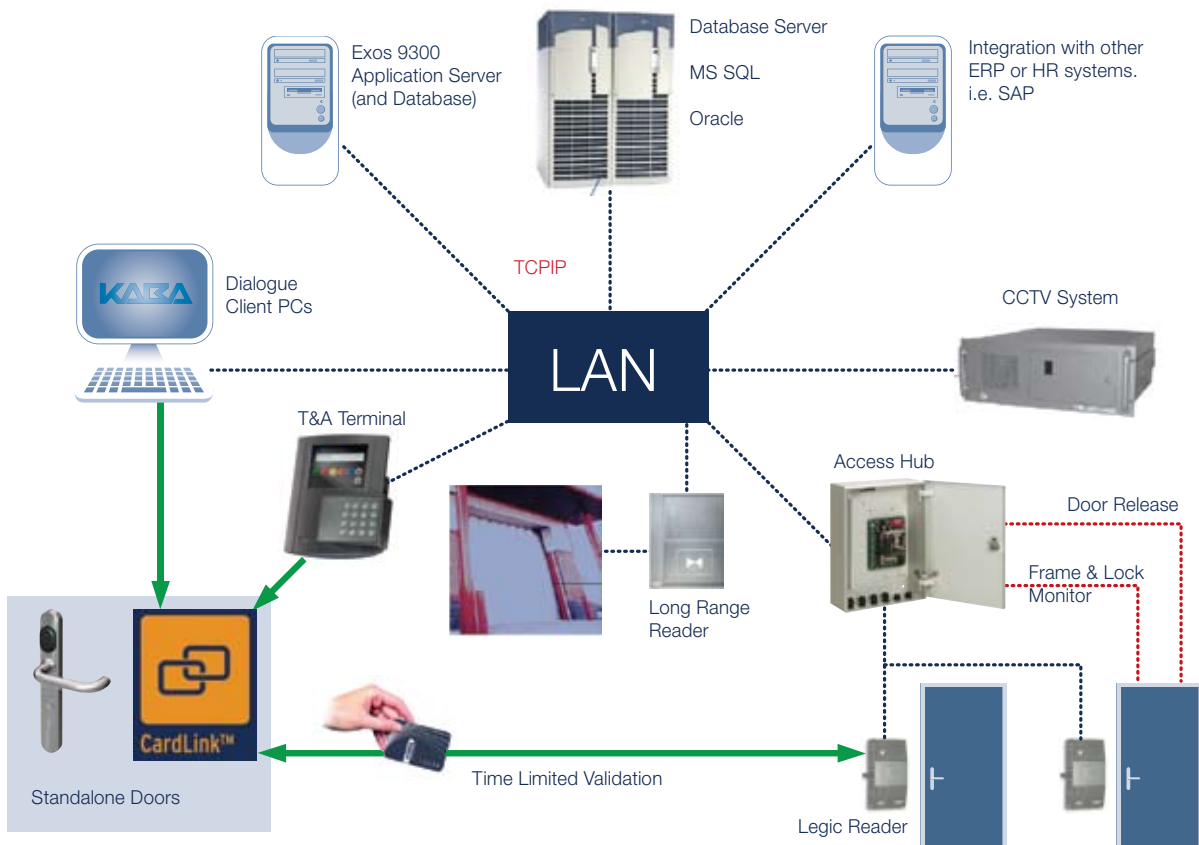
flexitime or fixed shifts, Exos provides simple, integrated administration for T&A, AC, and ESS from within one system.



SAP and Building Management interface

ensuring all your enterprise-wide systems integrate seamlessly.

Exos 9300 Infrastructure



A practical yet powerful application.

A day in the life

Let's look at how this works from a user's point of view.

Coming to Work

You arrive in the morning at the car park barrier, and use your proximity smart card to gain entry. Your picture flashes up on the gate house PC. The car park management module allocates you a spot, and restricts the number of visitors to the car park. You enter the building, and as you present your card to the reader on the turnstile, a time stamp is added to the card which will validate you to use the 'standalone' access control doors that you have an access profile for.

You clock yourself in on the integrated Time and Attendance terminal, and head for the lift. The lift reader gives you access to your floor, and the standalone door lock lets you into your office.

During the Day

Using your 'Web Browser', you pre-book a visitor and allocate them a parking spot. When they arrive at reception, the receptionist has all the information available, allocates an access card, and they are efficiently booked in.

While on site, there is a fire alarm, and the presence report is checked off to see who is in. Your visitor is also on the list. Every one is safe.

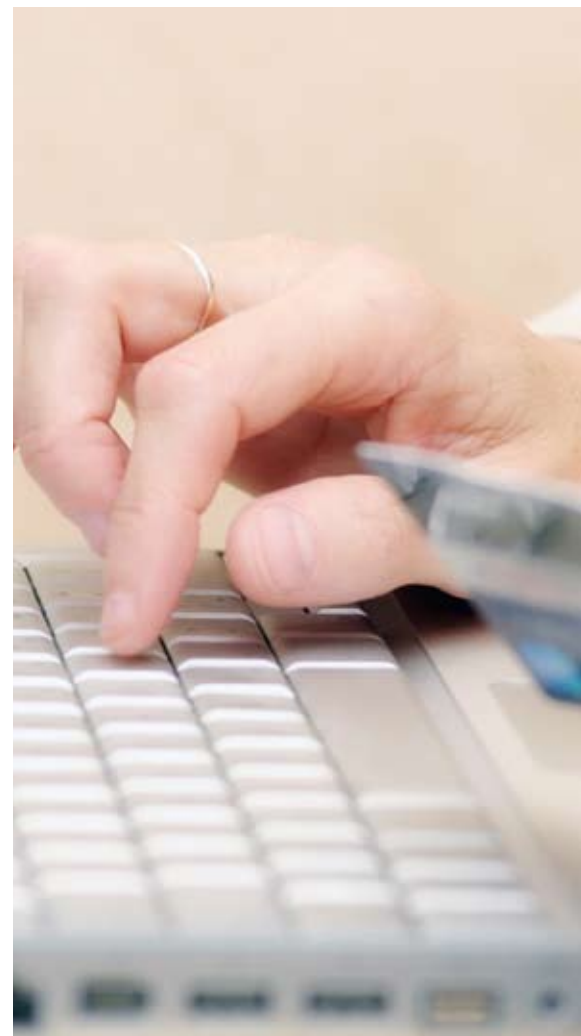
Lost card at lunchtime

At lunchtime, you lose your card in town. When you get back to the office, the security manager blocks your old card with one click, and issues you with a temporary new card. He reminds you that this is your third lost card; the system holds all these records. Neither of you are worried about the standalone doors blocking your old card, as the validity time stamp will have run out, and cannot be revalidated, so the lost card will not work. You get a drink from the cashless vending system using your new card and go back to your office.

Prepare for site visit

You are travelling to another site tomorrow, so you request access rights to get you into that site. The security manager at that site adds new doors to your profile, and you update your 'standalone' access rights at the T&A terminal with one click as you leave and clock out.

You leave for home, prepared & ready for your trip tomorrow.



Benefits for all parts of the organisation

The design and technology of the system provides significant benefits to the different users around the system.

IT Department

- Kaba Exos 9300 runs over an organisation's IT network infrastructure and/or structured cabling. This allows for cost effective installation and enhances investment already made in the network structure. It future proofs the system to enable multi-site implementations with no extra infrastructure.
- The system uses standard MS SQL or Oracle databases. This uses the current knowledge of your organisation's IT professionals.
- Kaba Exos 9300 has standard interfaces for SAP, Oracle applications, and OPC server for building management systems. This makes the long-term support of this integrated solution simple and cost effective.

Building and/or Security Manager

- The Kaba Exos 9300 system has built-in resilience down to door level. This means if the network or server is off line, the system still operates with current settings. This ensures security and organisation is constantly maintained.
- Integration with SAP or other HR system ensures new or ex-employee information is in the access control (or T&A) system instantly. This ensures security is maintained at a high level, and administration of the system is reduced to a minimum.
- With CardLink, networked and standalone doors can be controlled in one system. This allows for cost effective addition of doors to the system at a fraction of the cost of an online access point. Standalone components can be moved around allowing simple changes to the access control system as an organisation changes.

Users

- Web browser user screens ensure those employees needing to administer their records are able to with little training or know how. Training and implementation costs can be low.

Finance

- Kaba have been in business for over 140 years with continuous financial stability. Investment security is assured with Kaba.
- System devolvement ensures the hardware compatibility of previous systems. The investment security in a Kaba hardware solution is assured, leading to a low long-term cost of ownership of the system.



KABA®

Kaba (UK) Limited
Lower Moor Way
Tiverton Business Park
Devon
EX16 6SS
Tel: 0870 609 0269
Fax: 01884 259592
Email: info@kaba.co.uk
www.kaba.co.uk