

# JVC

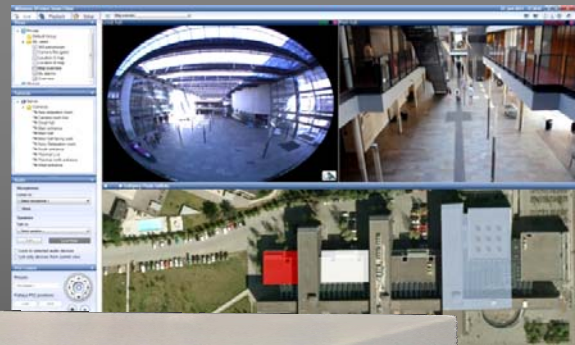
MULTI CODEC NETWORK VIDEO RECORDER

## VR-X1600U VR-X3200U

### SuperLoLux HD™



Powered by Milestone

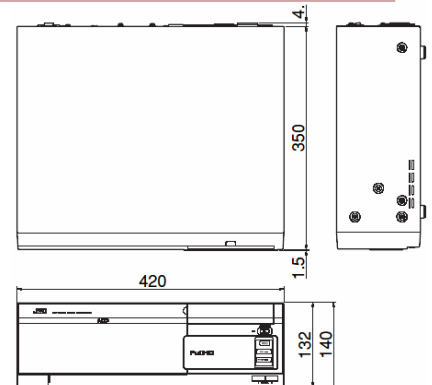


## *JVC Security at the highest level*

*Hardware, software and camera licenses all pre-installed for 24 / 7 operation*

- ✓ *Pre-installed Milestone Xprotect Enterprise for user friendly interface + Turnkey solution with JVC support and warranty*
- ✓ *16ch / 32ch fully camera licensed*
- ✓ *Expandable up to 32ch / 64ch optionally*
- ✓ *H.264 High Profile / MPEG-4 / JPEG multi format*
- ✓ *2800 ips recording maximum [H.264 HP VGA]*
- ✓ *Bi-directional audio with max 32 / 64 channels*
- ✓ *Three HDD expansion slots for additional storage*
- ✓ *Maintenance friendly HDD installation mechanism from the front panel*
- ✓ *Reliable design, MTBF 49,000 h*
- ✓ *Reliable and high performance components for industrial use provide durable and stable performance*
- ✓ *Master/Slave configuration for large system without any additional license or server PC*
- ✓ *Dual monitor support [DVI +VGA]*
- ✓ *Support RAID 1, 5, 10 initially and 6 optionally*
- ✓ *Remote setup and monitoring by PC*
- ✓ *Password protection for exported data and total system protection by user name and password*

		VR-X1600U	VR-X3200U
Camera channel		16 ch licensed (Up to 32 ch in total optionally)	32 ch licensed (Up to 64 ch in total optionally)
Video compression		H.264 High Profile / MPEG-4 / JPEG	
Audio compression		$\mu$ -law (64kbps) A/D 8 bit, Fs 8KHz	
Frame rate	w/o local view H.264 High ProfileVGA H.264 High Profile 720P H.264 High Profile Full HD JPEG VGA	Recording / Local viewing / Distribution 2800* / 0 / 300 ips 900 / 0 / 100 ips 480 / 0 / 44 ips 270 / 0 / 192 ips  * Actual ips is limited by the spec of the max number of cameras.	Recording / Local viewing / Distribution 2800* / 0 / 450 ips 900 / 0 / 150 ips 480 / 0 / 66 ips 270 / 0 / 192 ips  * Actual ips is limited by the spec of the max number of cameras.
	With local view H.264 High ProfileVGA H.264 High Profile 720P H.264 High Profile Full HD JPEG VGA	Recording / Local viewing / Distribution 300 / 300 / 300 ips 100 / 100 / 100 ips 44 / 44 / 44 ips 192 / 192 / 192 ips	Recording / Local viewing / Distribution 450 / 450 / 450 ips 150 / 150 / 150 ips 66 / 66 / 66 ips 192 / 192 / 192 ips
CPU and memory		Intel G6950 Dual Core 2.8GHz, RAM 4GB	Intel Core i3 3GHz, RAM 4GB
HDD capacity		1TB pre installed 3TB additional (Optional bracket VR-HD0U is required for additional HDD installation)	
NAS archiving		Yes	
RAID		RAID 1, 5, 10 initially, RAID 6 optionally	
Export function		Export media : USB memory, CD-R/RW or DVD-R/RW (USB external) Export format : AVI (video), JPEG (image), database (internal format)	
Recording function		Alarm recording, Scheduled recording, Manual recording	
Search function		Normal/Slow/Fast playback, fast forward and reverse, Frame-by-frame playback	
Security		Protected by user name and password	
Language		English	
Supported protocol		HTTP, SMTP(client), TCP, DHCP(client/IP lease), ARP, DNS(client), NTP, SNMP(ver1 and 2c)	
Minimum System Requirements (for NVR Viewer)		OS :Microsoft Windows XP professional*, Windows Server 2003*, Windows Server 2008 R1*/R2* Windows Vista (Business*, Enterprise*, Ultimate*), Windows 7 (Professional*, Enterprise*, Ultimate*) CPU : Intel Core2 Duo 2.4GHz or higher RAM : 1GB Network : 100Mbit or higher HDD : 100 MB free Graphic : AGP or PCI-Express, minimum 1024 x 768 (1280 x 1024 recommended), 16-bit color Other : DirectX 9.0 or newer required to run Playback Viewer application. Microsoft .Net Framework 4.0	
Supported devices		VN-V17U/217U/217WPU, VN-H37U/137U/57U/157U/157WPU/237U/237VPU/257U/257VPU VN-V25U/26U/X35U, VN-V225U/V225VPU/X235U/X235VPU VN-V685U/V686U/V686WPU/V686BU/V686WPBU AXIS M1054/M1114/M3014/P1346  * Over 1000 devices can be connected by installing the device driver provided by Milestone. Auto detect function and guarantee of proper operation apply to the devices mentioned above only.	
I/F		LAN1 / LAN2: 1000BASE-T, 100BASE-TX, 10BASE-T Serial : USB 2.0 x 6 Display : RGB x 1, DVI x 1 (digital only) External storage : eSATA x 1 Audio in/out : mini jack x 2 Alarm terminal : Input x 12, Output x 5 / GND x 3	
Power		120VAC - 240VAC, Max 1.2 A (120VAC) consumption	
Operating temperature		5 deg C - 40 deg C / 41 deg F - 104 deg F	
Dimension		420 mm x 140 mm x 350 mm / 16-5/8 inches x 5-5/8 inches x 14-3/5 inches, 3 RU	
Weight		9.1 kg / 20 lbs.	
Accessories		Operation Guide (1), Setup Manual (1), Power cord (3), Rack mount bracket (2), Screws (8)	



MTBF is not the term of warranty. Recording frame rate and period vary depending on the system environment

Information in this document is subject to change without notice.

Copyright 2011 Victor Company of Japan, Limited. All rights reserved. All product names stated in this document are trademarks or registered trademarks of their respective companies. Marks such as TM, (R), and (C) are omitted in this document.