

# JVC®

The Perfect Experience / —  
/

## DUAL STREAM NETWORK CAMERA VN-V25U

IP Camera with Progressive Scan CCD and Simultaneous Distribution of MPEG-4 & Motion JPEG Pictures

Progressive Scan 30 VGA fps Easy Day/Night PoE Power over Ethernet DUAL STREAM



## MPEG-4/Motion JPEG Dual Stream and Progressive Scan CCD to Deliver Precise Images for Versatile Monitoring and Security Applications

### ■ 1/4" Progressive Scan CCD for Clear, Precise Images

The VN-V25U's progressive scan images are optimal for monitoring on LCD or TFT monitors. You can obtain flicker-free noiseless images even for moving objects.

### ■ Simultaneous Distribution of Full-Frame MPEG-4 and Motion JPEG

The VN-V25U can stream both MPEG-4 and Motion JPEG VGA images simultaneously at the full frame rate (30 fps). MPEG-4 distribution is ideal where monitoring with smooth, high frame rate images is required within a limited bandwidth. Motion JPEG images are useful when you need to record images as evidence data, because of the high quality still pictures it can provide.

### ■ Easy Wide-D Function for Backlight Compensation

The VN-V25U's Easy Wide-D function is equivalent to the conventional Wide Dynamic Range function, allowing pictures to be adjusted to identify details of the subject even in difficult backlit conditions.

### ■ PoE for Saving Installation and Cable Costs

Built-in PoE (Power over Ethernet) allows the camera to be activated through a LAN cable connection. The PoE function not only reduces cost for installation and power units, but also enables uniform management of the power supply and easy response in case of a power failure in conjunction with UPS devices. (IEEE 802.3af supported)

### ■ Easy Day/Night Function for Daytime through Nighttime Surveillance

Easy Day/Night function assures round-the-clock optimum imaging performance. The VN-V25U automatically uses color mode when the object is bright, and B&W mode when it is very dark. In B&W mode, AGC remains active to ensure high performance even under low-light conditions.

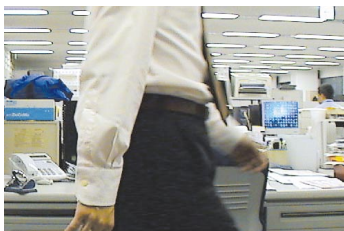
### ■ Electronic Sense Up for Low Light Situations

Electronic Sense Up function provides a higher sensitivity level for monitoring at dark locations by automatically lengthening the exposure time.

# Full Array of Intelligent Monitoring Functions in an Easy-to-Use, Compact Design

## ■ 1/4" Progressive Scan CCD for Clear, Precise Images

The VN-V25U's progressive scan images are optimal for monitoring on LCD or TFT monitors. You can obtain flicker-free noiseless images even for moving objects.



VN-V25U Progressive scan



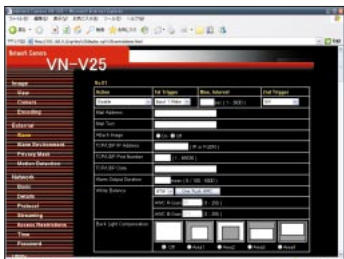
Interlaced scan

## ■ Privacy Mask for Protecting Intrusive Monitoring

Free shape and unlimited number of masked areas can protect subjects from invasion of privacy.

## ■ Easy Setup and Viewing with Built-in Tools

Initial setup of the VN-V25U is through Internet Explorer. Since all necessary tools are built into the camera unit, just access the camera via a PC and the setup tools and viewer tool will be available on screen. With the built-in viewer, a variety of operations including snapshot and alarm notification are possible.



Set-up screen



Built-in Viewer

## ■ Downsized and Lightweight Body

The VN-V25U is 20% smaller and 10% lighter than a conventional JVC box-type camera. In addition, thanks to the inner tripod base, it can be installed into an even smaller housing.

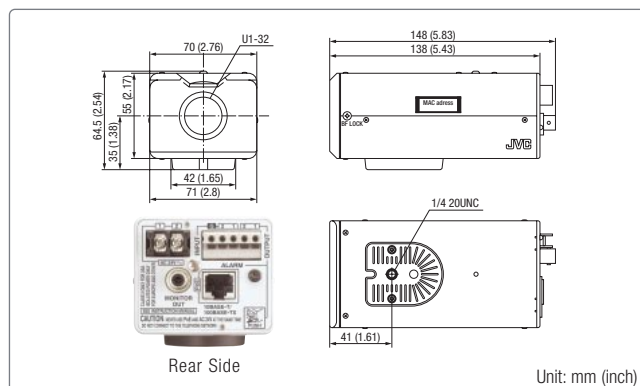
## ■ Lowest Operating Temperature of -10°C

The VN-V25U can be used in a wide range of environments. Its operable temperature range is from -10°C to 50°C (14°F to 122°F). No special housing is necessary for installation even when switching from an existing CCTV system.

## ■ Other Features

- Motion Detection
- NTSC/PAL Monitor Output (only for set-up)
- FTP/Client Function
- Multicasting Capability
- Compatible with JVC Network Video Recorder VR-N900/1600 Series
- Compatible with JVC VN-RS800U (Free software for surveillance with up to 8 cameras)

## ■ Dimensions and Rear Side



## ■ Specifications

CAMERA	
Image device	1/4" Progressive scan CCD
Number of effective pixels	330,000 (659H x 494V)
Minimum illumination (typical)	
Color mode:	1.0 lx, F1.2, AGC SUPER (50% video level) 0.5 lx, F1.2, AGC SUPER (25% video level)
B&W mode:	0.8 lx, F1.2, AGC SUPER (50% video level) 0.4 lx, F1.2, AGC SUPER (25% video level)
Iris control	DC iris
White balance	ATW/AWC
AES	AUTO, 1/30 to 1/10000
AGC	OFF/MID/HIGH/SUPER
Sense Up	x 2 to x 62
Motion detection	Yes (on/off)
Private mask	Yes (Free shape, unlimited number of masked areas)
Display mode	CUSTOM, LCD1, LCD2, CRT
Lens mount	C/CS
NETWORK	
Network interface	RJ45 (CAT5), 10BASE-T/100BASE-TX
Picture resolution (pixel)	640 x 480, 320 x 240
Compression	Motion JPEG: VFS 7 steps, AFS 10KB - 100KB MPEG4: Part 2 (ISO/IEC 1449602) CBR or VBR selectable Profile: SP
Frame rate (max.)	30 fps in all resolutions
Compression level	91 (Average), 7 (Variable)
Pre/Post alarm buffer	8 MB
Access protection	3 levels password
Data transmission	Unicast/Multicast (IGMP Ver. 2)
Protocol	TCP/IP, UDP/IP, FTP, ICMP, ARP, DHCP, SNMP, HTTP, DSCP
Max. clients	20 simultaneous users Unlimited users using multicast
GENERAL	
Alarm I/O	Input x 2, Output x 2
Monitor output	Yes (Only for setup, unavailable during network output)
Power supply	24V AC / 48V DC (PoE)
Power consumption	0.35A (24V AC) / 5.5W (PoE)
Operating temperature range	-10 °C to 50 °C (0 °C to 40 °C recommended)
Dimensions (W x H x D)	65 mm x 55 mm x 115 mm
Weight	480g
SYSTEM REQUIREMENT (recommended)	
OS	Windows® XP Home Edition (SP2) Windows® XP Professional (SP2)
CPU	Pentium® 4, 1.5GHz or higher
Memory	More than 1 GB
HDD space	More than 512 MB
Display/Video card	1,024 x 768 pixels, True color (24-bit or 32-bit) VRAM 256 MB

All brand or product names may be trademarks and/or registered trademarks of their respective owners. Copyright © 2007, Victor Company of Japan, Limited. All Rights Reserved.



DISTRIBUTED BY



Design and specifications subject to change without notice.



■ Hachioji Business Centre of Victor Company of Japan, Ltd. has received ISO14001 Certification for environmental management and ISO9001 Certification for quality assurance management.

Printed in Japan  
VEC-0323 VN-V25U

"JVC" is the trademark or registered trademark of Victor Company of Japan, Limited.