

# JVC PROFESSIONAL

NEW PRODUCT INFORMATION

# V.NETWORKS

Visual Network System



## VN-C30U • Visual Network System

New State-Of-The-Art Network Camera System Offering High-Quality CCD Sensor And 15x Optical Zoom Mechanism For High-Resolution Imaging And Detailed Monitoring

The latest addition to JVC's V.NETWORKS series, the VN-C30U brings a new standard of quality and performance to network-based imaging. Featuring a powerful CCD, the VN-C30U delivers dramatically improved picture quality that's maintained even in close-up telephoto shots by a built-in 15x optical zoom. Image delivery has been improved too with the addition of MPEG1 compression for smoother, real-time motion. With a built-in 10Base-T/100Base-TX interface, this versatile camera can be plugged into just about any network for high-speed data transfer and operation.

<http://www.jvc-victor.co.jp/english/pro/vnetworks/index-e.html>

### Major Features

#### 1/4" 380,000-Pixel CCD To Capture Clearer Images

If your application requires precise, high-quality imaging, the VN-C30U is the right choice. Incorporating a high-resolution 1/4" CCD with 380,000 pixels, the VN-C30U captures superior, high-quality images with more light and more detail. Clear, bright images are assured, even at night, making it ideal for monitoring or security/surveillance applications where accurate imaging is critical.

#### Powerful 15x Optical Zoom

In spite of its compact size, the VN-C30U is no lightweight when it comes to imaging capabilities. It incorporates a powerful optical 15x zoom mechanism that you can easily control from your PC.

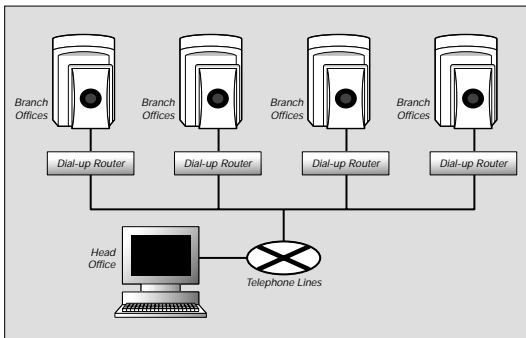
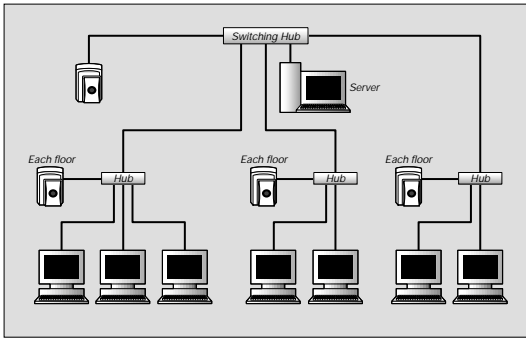
#### MPEG1 Smooth Motion Pictures

To improve delivery of motion images, the VN-C30U adds MPEG1 image compression to the conventional JPEG standard. With MPEG1, motion images can be efficiently compressed for network transfer, while maintaining a frame rate of 30fps for minimal loss of movement. Managing data flow over your network is easy too, because you can also set the constant bit rate you prefer.

#### 10Base-T/100Base-TX Interface For Direct Ethernet Connection

With a built-in 10Base-T/100Base-TX interface, the VN-C30U can be incorporated with equal ease in a conventional 10Base-T LAN or the latest high-speed 100Base-TX network. Simply connect the camera to an existing Ethernet network and assign it an IP address. That is all you need to do to get it up and running on a network.

## System Examples



## Other Features

### ■ Built-in Multi-Angle Pan/Tilt Capability

The high-speed pan/tilt function gives you control over horizontal, vertical and diagonal camera movement. Up to 10 presets are available, allowing quick access to the desired monitor location.



### ■ Alarm In/Out Function

The VN-C30U can be set to work in conjunction with an infrared sensor or door alarm, automatically moving to a preset position when an alarm signal is received.\* Automatic alarm recording is also possible.

\*Pre-setting of desired camera angles or zoom ratios is necessary.

### ■ Viewer/Controller Software Included

The included viewer/controller software enables remote control of a variety of camera operations and settings such as network and picture quality setting, as well as pan/tilt and zoom control. You can also operate recording and playback of the camera images.



Viewer/Controller Software

## Specifications

<b>Camera</b>	Image Sensor	1/4" CCD, 380,000 pixels
<b>Lens</b>	Zoom	Optical 15x
	Focal Length (f)	4.1mm — 61.5mm
	Aperture Ratio (F)	F1.4
	Focus	Auto/Manual
	Min. Object Distance	0.8m
<b>Interface</b>		10Base-T/100Base-TX
<b>Alarm I/O</b>		Input x2, Output x1
<b>Protocol</b>		UDP/IP, TCP/IP
<b>Picture</b>	Resolution (Pixels)	160 x 120, 320 x 240, 640 x 480
	Compression	MPEG1, JPEG
<b>Frame Rate (fps)*</b>	160 x 120	MPEG1: 30, JPEG: 15
	320 x 240	MPEG1: 30, JPEG: 10
	640 x 480	MPEG1: —, JPEG: 3
<b>Position Memory</b>		10 positions
<b>Pan/Tilt Angle</b>	Pan	+160° — -160°
	Tilt	0° — -90°
<b>Pan/Tilt Speed</b>		100°/s
<b>View Through</b>		JVC Control Software
<b>Power Requirement</b>		DC12V 2.0A (Max.)
<b>Dimensions (H x W x D)</b>		166mm x 105mm x 105mm (6-1/2" x 4-1/8" x 4-1/8")
<b>Weight</b>		800g (28.2 oz.)

\*Frame rate varies depending on the operating environment.

## V.NETWORKS Lineup:

### Cameras:

- |   |  |
|---|--|
| <b>VN-C3U</b><br>• Optical 10x Zoom<br>• Pan/Tilt<br>• Alarm In/Out | <b>VN-C3WU</b><br>• Optical 10x Zoom<br>• Pan/Tilt<br>• Web Server<br>• Alarm In/Out |
| <b>VN-C2U</b><br>• Pan/Tilt   | <b>VN-C2WU</b><br>• Pan/Tilt<br>• Web Server   |
| <b>VN-C1U</b><br>• Fixed Lens                                       |  |

### Accessories:

- VN-BK20**  
Bracket for VN-C2U/2WU
- VN-BK30**  
Ceiling bracket for VN-C30U/C3U/C3WU
- VN-BK31**  
Wall bracket for VN-C30U/C3U/C3WU