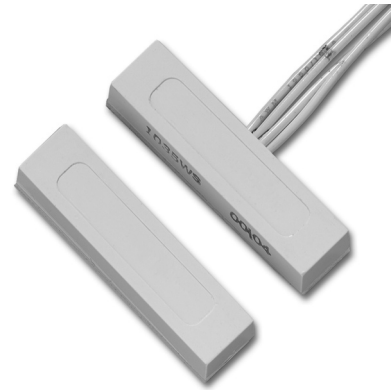


1035 series surface mount contacts

miniature magnetic contacts with wire leads

The 1035 series magnetic contacts save installation time through the use of a specially formulated 3M® adhesive tape. The tape, which establishes a permanent bond between the contact and the surface, can be repositioned in the first five minutes. A low profile and small footprint combine with reliable GE Security technology to make the 1035 series contacts a good choice for applications where drilling holes is impractical.

A wide gap model is available to protect against false alarms from loose-fitting doors and windows.



Specifications

Voltage:	100 VAC/VDC max.
Current:	0.5 A max.
Power:	7.5 W max.
Loop type:	Closed
Electrical configuration:	Normally open
Gap distance:	1035: Up to 5/8 in. 1035W: Up to 1 in.
Lead type:	1 ft. #22 wire
Dimensions (WxHxD):	1.50 x 0.375 x 0.25 in. (38 x 9.5 x 6.4 mm)
Housing:	Flame retardant ABS plastic
Color:	White
Regulatory:	UL, CUL

Ordering information

1035N-10PKG (-50BOX)	Surface mount miniature self-adhesive contact with wire leads, 5/8 in. gap size, closed loop, white, pk/10 (pk/50 -50BOX)
1035WN-10PKG	Surface mount miniature self-adhesive contact with wire leads, wide gap, 1 in. gap size, closed loop, white, pk/10

- Quick tape mounting; no screws or glue needed
- Urethane/acrylic tape bonding improves with age
- Attractive, low-profile design
- Ideal for thin-frame windows or on sliding glass doors
- Available wider gap distance helps prevent false alarms caused by loose-fitting doors and windows

