

LC-780 series

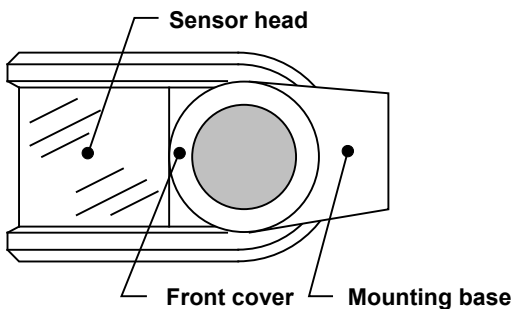
PIR Light Control SenSwitch



Installation Instructions

INSTALLATION HINTS

- Avoid aiming the sensor head at direct or reflective sunlight which could cause permanent damage or false triggering.
- Avoid locating the SenSwitch in areas which contain objects likely to produce a rapid temperature change such as heating vents, air conditioners dryer...etc.
- Avoid installing the SenSwitch nearby trees or area where public/traffic may trigger unwanted light.
- Select a location where the direction of movement will be "across" the detection pattern for better sensitivity. To obtain proper detection, mounting height should be 1.8 ~ 2.4 meter for wall mount or 2.7 ~ 5.0 meter for ceiling mount.



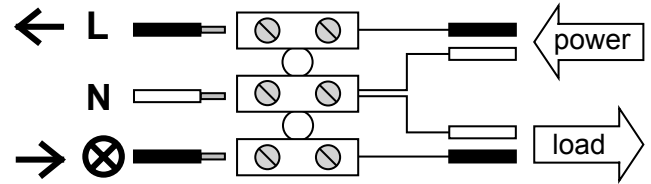
CAUTION

- Some local building codes may require installation by a qualified electrician. Consult an electrician about correct wiring.
- The main power must be switched off before installing.

INSTALLATION & WIRING

1. Remove front cover and sensor head from the mounting base by releasing two fixing screws..
2. Apply the mounting guide sticker at the selected position for drilling mounting holes. Insert dowels and mount the base with mounting screws.
3. Lead the wires from power source and light through passage hole on rubber gasket beneath the base. Connect wires to correct terminals according to following instruction for different operation mode.

LC-780/780HD

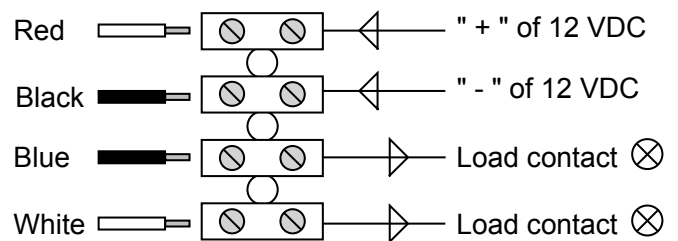


← L : Live wire from power source

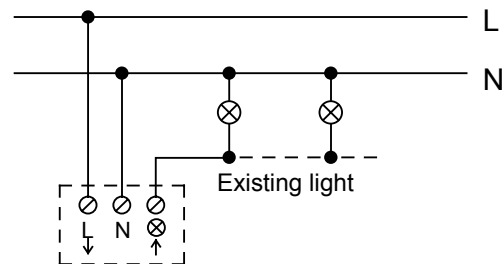
N : Neutral wire

→ ⊗ : Live wire to load (light)

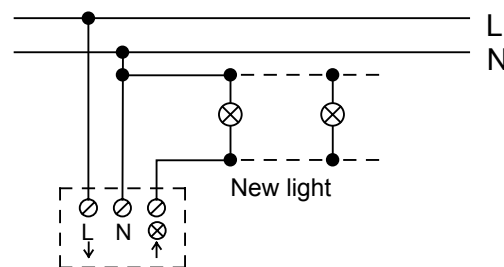
LC-780LV



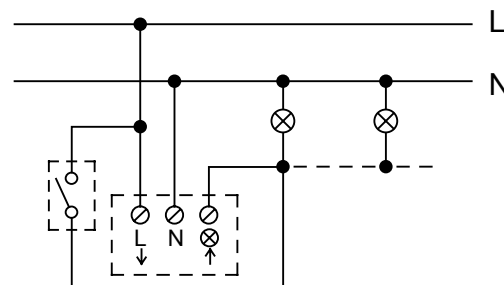
A. AUTO



The above wiring enables SenSwitch to control the light automatically by detecting the motion.



B. AUTO-MANUAL OVERRIDE



INTRODUCTION

Thank you for your purchasing IR-TEC Passive Infrared Light Control SenSwitch. It is a motion sensor for automatic light control applications. It applies the advanced infrared sensing technology to control lighting automatically by detecting human body motion. It will turn on the light instantly when motion is detected and turn off automatically after the delay time expires. SenSwitch not only provide convenience and energy saving, but also security as the unexpected, sudden light is a well know, effective means to frighten the unwanted intruder away.