



## ioi ware command center

### Command and Control Software



The ioiware command center software provides a variety of features and functions for centralized management, system-wide administration, and enterprise site command and control.

The command and control capabilities provide an intelligent layout and easy-to-use features for displaying video surveillance, operating intelligent video functionality of iomage ioiboxes and ioicams, designing and using site maps, communicating using two-way audio,

reviewing alarm logs, archiving and recording, scheduling detection, playing camera sequences, controlling pan/tilt/zoom, and much more.

The ioiware command center simplifies the configuration of ioiboxes and ioicams on a LAN/WAN for proficient configuration and administration of the components of a security system. It unifies ioicams, ioiboxes, external alarm devices, and relay outputs in a comprehensive and synergic security net.



# command center

## Detection, Alarms & Responses

- Notifies on alarm with heads-up annunciations, flashing alarm-indicators and automatic switching to a primary alarm view that shows high priority video
- Efficient alarm management – alarm identification reporting system with video archive allows easy search for investigating and managing alarms and associated video
- Supports PTZ Tracking to lock on a moving threat and automatically track it autonomously keeping the PTZ camera focused and centered on the moving target
- Provides alarm-control-module functionality for clearing alarms, arming and disarming of remote ioiboxes and ioicams
- Supports full-duplex audio allowing two-way communication, ideal for integrating with loudspeaker systems or communicating with rapid responders

## External Device Interfacing

- Supports location display, on-screen alarms, and commanding of external devices that are connected to the ioiboxes and ioicams – alarm inputs, such as monitor fire alarms, fence sensors, etc. – relay output commanding, such as shut down hazards, lock doors, sound alarms, deploy auto barriers, etc.
- NVR Video Search And Playback
- Supports multiple criteria search and playback of archived and recorded video
- Archive playback offers simultaneously multiple view of live and recorded footage

# site maps



- The sitemap feature allows the creation of on-screen site overview boards (e.g. floor-plans, ground-plans, city sub-divisions or aerial photos) with plotted cameras and external devices – sitemap boards can be interlinked for multi-tiered navigation

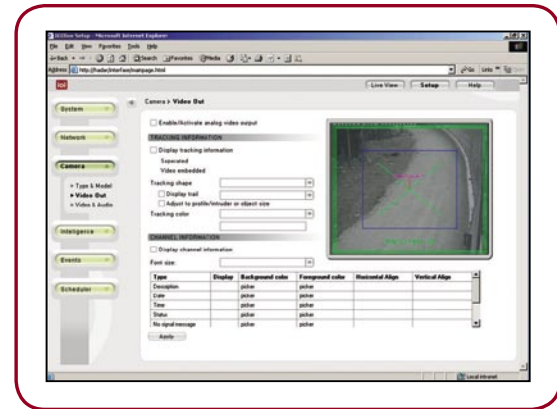


- The command center software renders sitemaps into an informative workspace that allows security personnel to gather information from the array of cameras and external devices across all areas of the site – at a glance, security personnel can identify camera/device type, status, relative location, name, region of interest, field of view, and if an alarm has been triggered



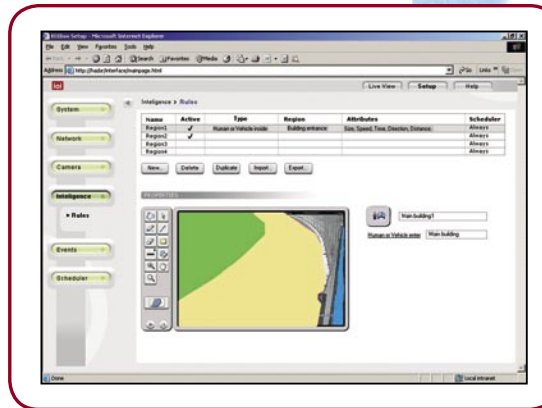
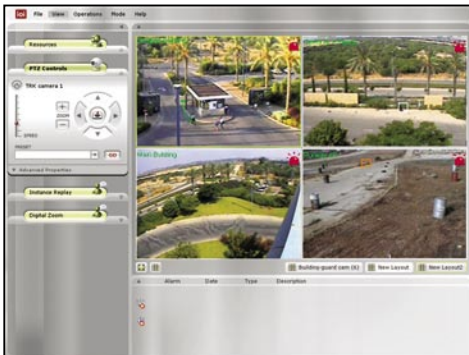
- From the sitemap, cameras and external devices can be selected and then armed, disarmed, or cleared of alarms – camera videos can be viewed in a video window overlay on the sitemap

- Easy drill-down allows navigation from one sitemap to another within the user-defined sitemap model (e.g. sitemap navigation could be modeled as an aerial sitemap view of an airport and security personnel could drill-down into a terminal floor plan and then to the departures wing)
- Graphical overviews of monitored areas can be invaluable when incident response requires strategic approach or scene safety, such as dispatching first responders or directing emergency services



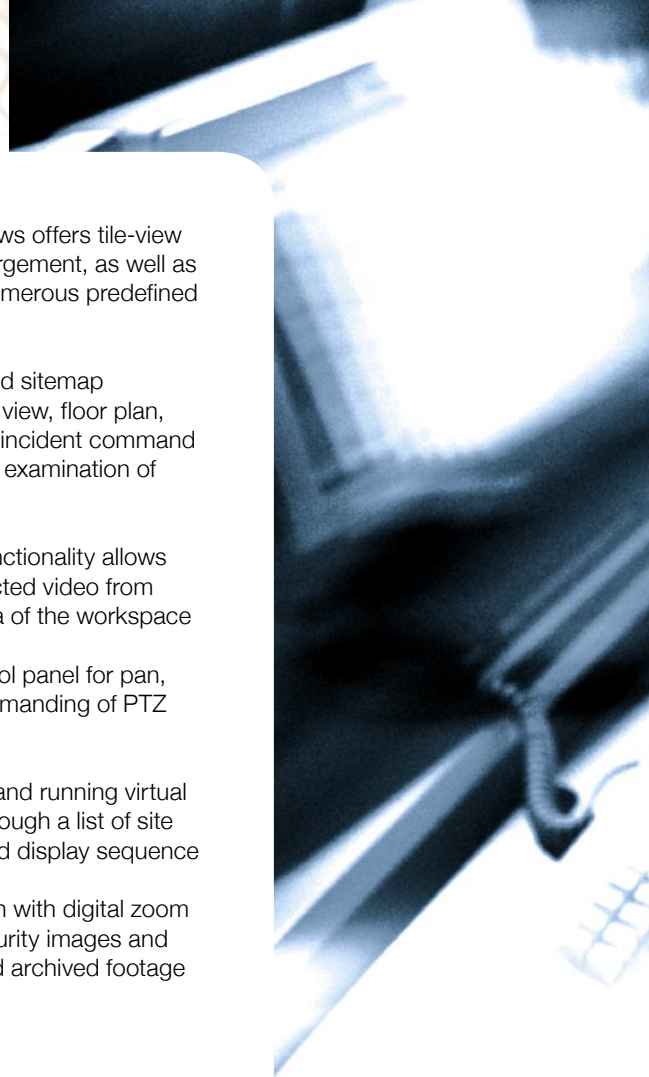
# additional features

- Integrates in a network architecture rendering high quality MPEG-4 audio and video transmitted over IP for centralized and distributed deployment supporting unlimited scalability with multiple clients
  - LAN/WAN accessible – IP-based architecture allows authorized users to access the system from local or remote computers on the network
  - Multi-user roles and user provisioning – password protection, camera access privileges and personalized workspace layouts
- provide functionality ideal for creating roles, job distribution and delegating specific cameras
- Internal management engine regulates quality of service (QoS) assuring the highest quality MPEG-4 audio and video playback for the available CPU
  - Command center software includes a PTZ remote-control panel for PTZ commanding in addition to standard PTZ joystick controllers (PELCO KBD-100, KBD-200, KBD-300) support



# console display

- Dual-screen-console support – expanded workspace allows the distribution of video layout across dual monitor consoles
- All-inclusive display capabilities – live viewing of up to 32 cameras on a single computer with dual-monitor setup
- Customized layout and OSD overlay allows users to save camera-preferences of window-layouts, as well as customize and show/hide OSD overlays that display camera status (armed or live), name, time stamp, and alarm status on video windows
- Instant replay of latest security event footage including the moments before the alarm while simultaneously viewing live alarm video in the same layout
- Easy display of remote cameras
- Multiple layout views offers tile-view or full screen enlargement, as well as toggles among numerous predefined layouts
- Features interlinked sitemaps capabilities (aerial view, floor plan, etc) for wide-area incident command with drill-down for examination of nested sitemaps
- Drag and drop functionality allows displaying of selected video from virtually every area of the workspace
- PTZ remote-control panel for pan, tilt and zoom commanding of PTZ cameras
- Allows designing and running virtual tours that loop through a list of site cameras in a timed display sequence
- Video investigation with digital zoom for examining security images and inspecting live and archived footage





## minimum system requirements

- CPU: Pentium III 1GHz Processor
- Sound Card: Any
- Memory: 256MB of RAM
- Hard Disk: 200MB free disk space
- Monitor: 17" 1024\*768 with 32bit color display
- Display Adapter: AGP Video Card (Minimum of 64MB of memory with MS DirectX 9 Support and True Color 32bit)
- OS: Win2000 Service Pack 2, or WinXP Service Pack 1
- Network: Ethernet 10/100



control