

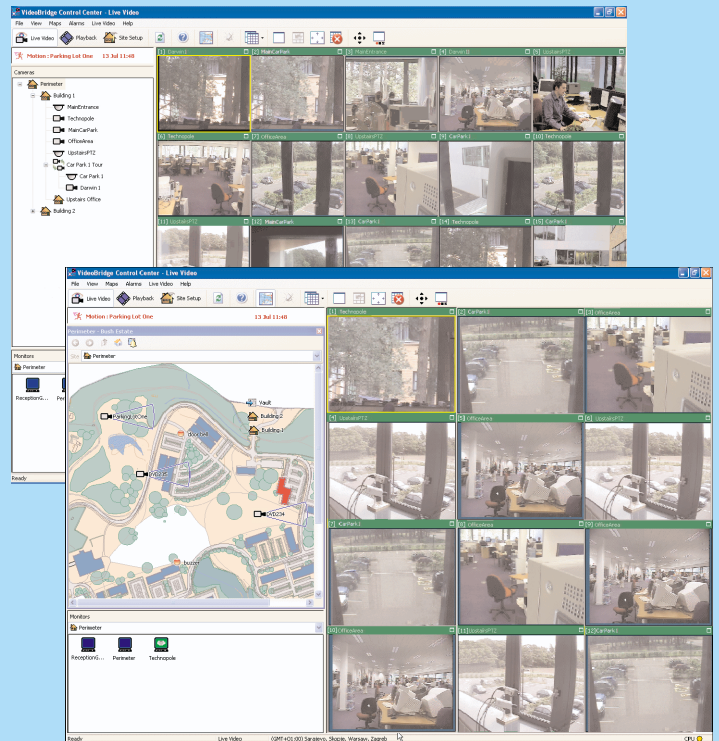
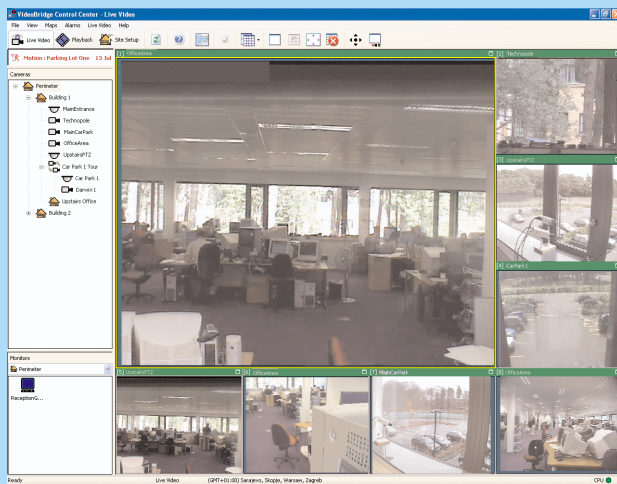
IndigoVision Control Center

A professional CCTV application with the power to view, record, play back and administer video and audio over IP networks

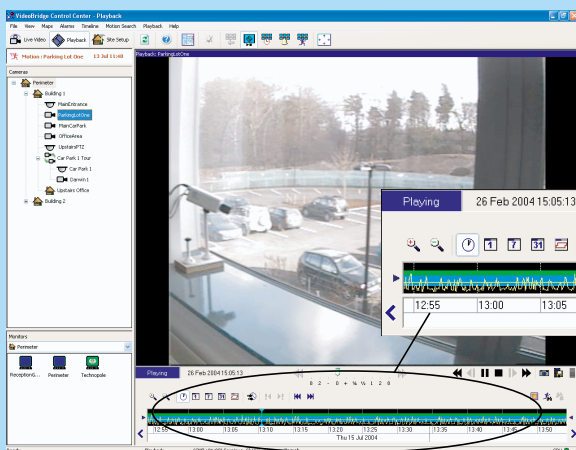
IndigoVision's Control Center is a highly scalable application which allows local and remote control of any CCTV system, from an entry-level system with a small number of cameras, to a large installation with several hundred cameras.

In conjunction with VideoBridge compression and transmission technology and IndigoVision's Networked Video Recorder (NVR), Control Center provides a complete solution for digital CCTV.

Live Video Views



Playback View



The standard video playback control buttons and jog/speed shuttle allow for easy navigation of recorded footage.

Motion profile displayed in timeline

IndigoVision

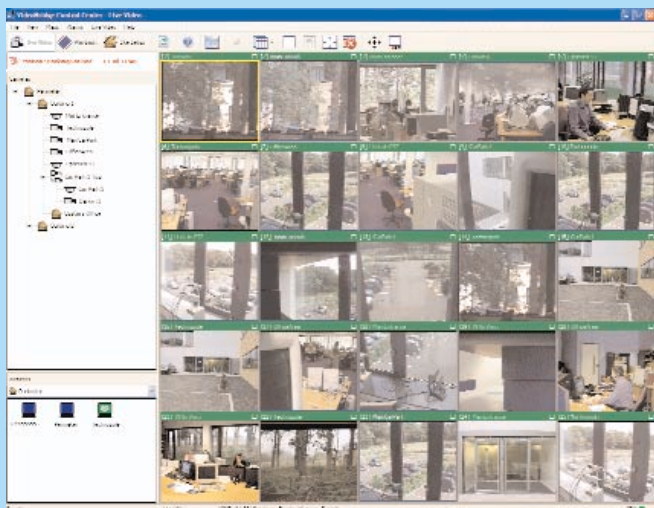
Key Features

- Control Center enables local and simultaneous remote monitoring, viewing and recording across multiple sites, regardless of geographical location.
- Control Center works with other 3rd party analog-based CCTV components, e.g., cameras, monitors, keyboards and PTZ units.
- Control Center can be used to quickly analyze thousands of recordings using motion, time and camera search criteria, saving valuable incident search time.
- Recordings can be played without interrupting current recording.
- Motion detect, binary and video loss alarms are supported. Control Center can also trigger relays when an alarm occurs.
- Control Center can be used to configure a device remotely, saving on man-hours.
- Control Center's sites facility and associated site maps can be used to group related cameras to enable fast and efficient navigation.
- Control Center allows low level access control per user to every camera.
- Once recorded, video cannot be altered, ensuring the audit trail is intact for evidential purposes.
- The VideoBridge architecture means that cameras, recorders and viewing platforms can be placed in completely separate locations, allowing recordings to be stored in a secure room, or even offsite.
- Several users can simultaneously view, manage and record across the network from any point on that network.

Viewing

Live Video View

This allows all users to display live camera output in up to 25 video panes, all at full frame rate (25x30 fps = 750fps) or on a full screen. In Live Video view, users can initiate two-way audio with a camera.



Control Center's Live Video view

Camera Sequences

Sequences allow users to view a sequence of cameras in succession in a PC window or on an analog monitor. There is no limit to the number of camera sequences that can be defined. Maps can also be used to ease site navigation.

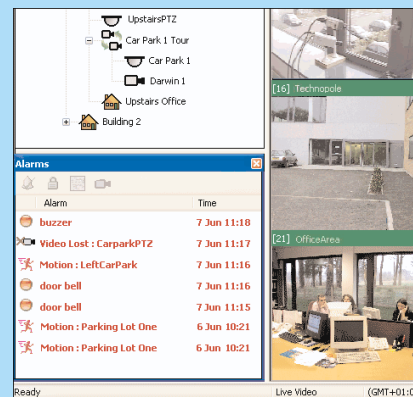
Alarms and Relays

Control Center provides audible and visual notification of alarms. These can be generated by devices such as PIRs attached to inputs on the VideoBridge device, by motion, or when video loss is detected.

Users can view video from the associated camera, move to a preset position and acknowledge the alarm.

Relays can be triggered automatically when an alarm occurs, opening a door when a buzzer is pressed, for example.

Control Center's alarm list



IndigoVision

Control Center

Recording and Playback

Control Center manages recordings for hundreds of cameras recorded on one or more VideoBridge NVRs.

Playback View

This view contains a playback window and a timeline, which together provide access to all available recordings. It also provides a set of powerful tools for reviewing recording footage and for quickly identifying vital evidence:

- Jog/speed shuttle
- Motion search with adjustable threshold
- Thumbnail views based on alarms, motion or time

The **jog/speed shuttle** includes frame-based single step forwards and backwards, and 8x speed at 240 fps. **Motion search** allows users to search through a period of recorded footage and measure motion as a percentage. Typical search performance: 8 hours searched in under 5 minutes. Minor movement, such as caused by animals or trees can be ignored.

Automatic Storage Management

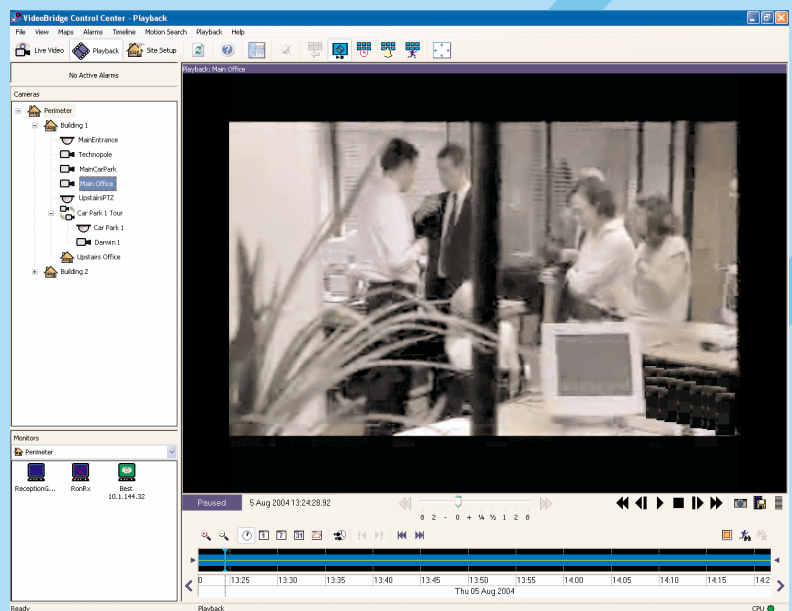
NVRs can be configured to delete recordings automatically by specifying a length of time that recordings should remain on them, or a minimum amount of NVR disk space.

Multiple Recorders

Control Center can be used to manage and administer several NVRs in the same system. The operator need not be concerned about where recordings are stored.

Recording Schedule

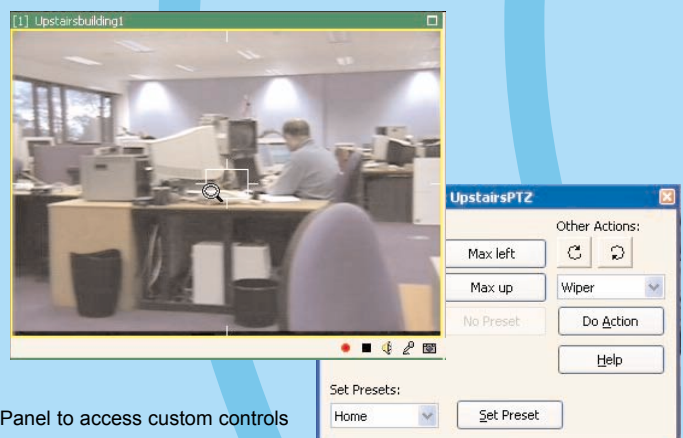
The recording schedule is used to specify when particular cameras should be recorded. Recording can occur all the time or different time-based recording scenarios can be specified. Recording can also start when an alarm occurs, including one triggered by motion.



PTZ Control

Users can control PTZ cameras in Live Video view. In addition, administrators can configure custom controls and presets for each PTZ camera.

PTZ cameras can be controlled using a "grid" over the video. The central square provides zooming functionality and the remaining areas allow the camera to be panned and tilted in different directions. Control Center also supports external joysticks.



Use the PTZ Control Panel to access custom controls and presets

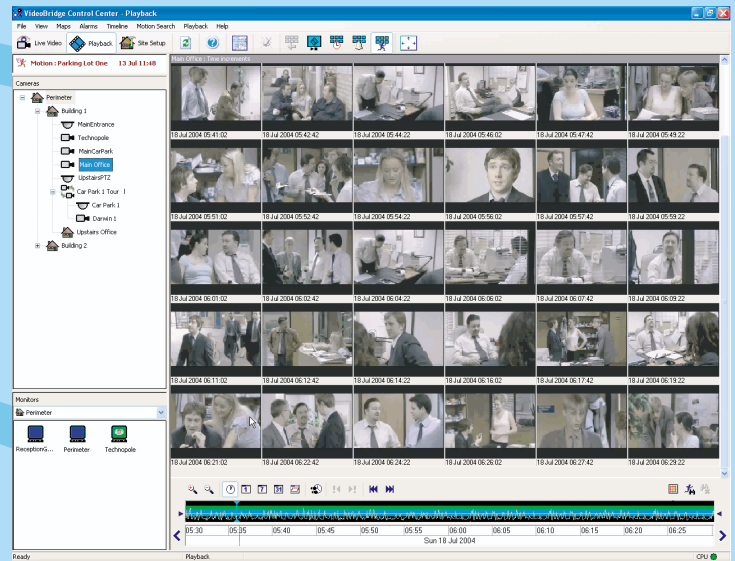
A professional CCTV application with the power to view, record, play back and administer video and audio over IP networks

Thumbnails

Thumbnail views display thumbnails of still images taken from recorded video within the current range of the time-line. Thumbnails for 8 hours of footage are displayed in 2 seconds.

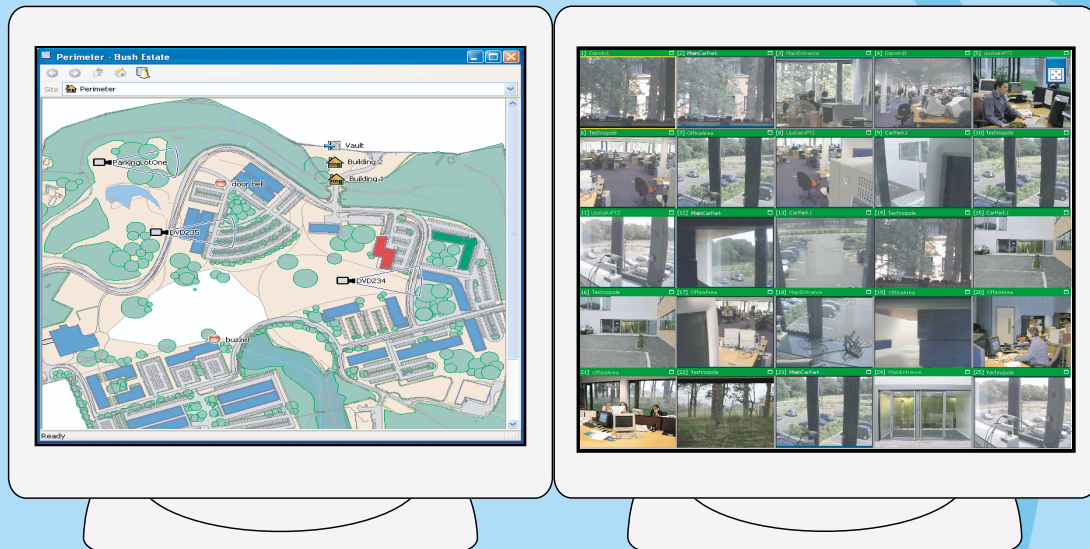
Thumbnails make searching through large amounts of footage easy and efficient. Time-based thumbnails allow users to identify an event where the exact time is not known, for example, the theft of a car from a parking lot. Motion-based thumbnails are excellent for identifying events where there are many sources of, or varying amounts of motion.

Control Center's Playback view with motion thumbnails



Maps

Control Center allows users to display a map of a site to help locate cameras and alarms. If using a dual monitor setup, users can drag and drop maps onto the second monitor. This means that the full map can be viewed on one screen, and the video panes on the other.



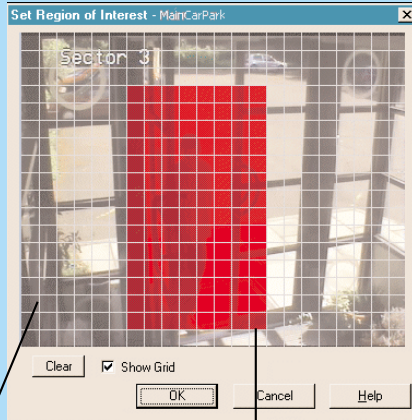
Watermarking

A watermark is added when exporting video sequences for evidential purposes. Control Center takes a digital signature of the sequence and watermarks this onto the video. This provides an extremely high level of security.

Control Center

Motion Search

Control Center allows users to search through a recording and identify any significant motion that occurred during it. The Region of Interest editor specifies which areas of the scene are to be observed or ignored when searching.

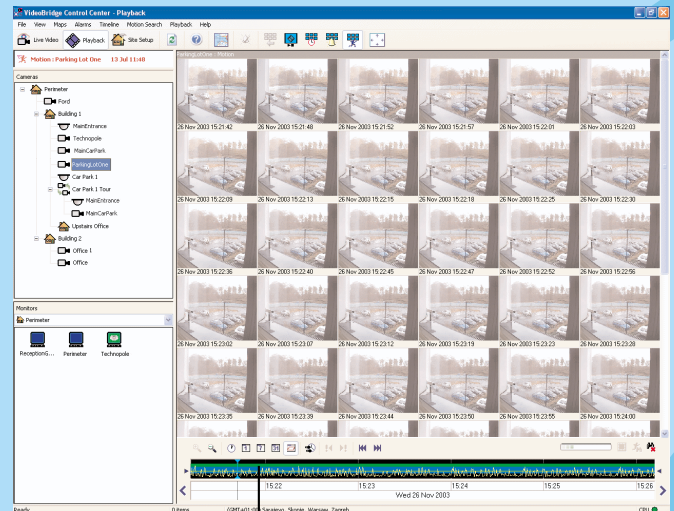


Specify areas to watch and to ignore

Each grid square can be watched or ignored

Once Control Center has compiled a motion profile of a recording, users can search through it based on the motion found using the current threshold. This threshold can be changed at any time. Users can zoom in for a more detailed view of the profile, and can also skip directly backwards and forwards through the profile.

Control Center creates a motion profile, which is displayed in the timeline as a graph. Users can display thumbnail views, which display points of significant motion within the time range shown in the timeline.



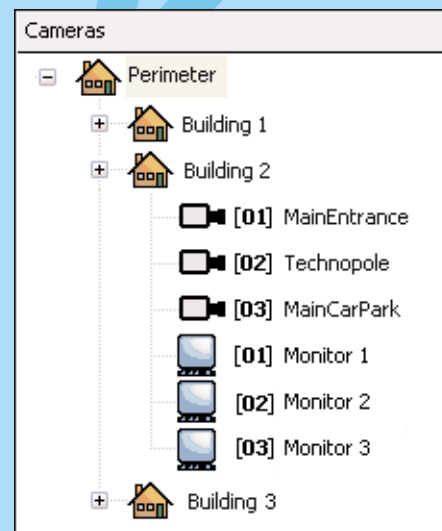
Motion profile displayed in timeline

Virtual Matrix

Control Center allows cameras and monitors to be allocated numbers as well as names. The administrator is free to allocate numbers in any way. When numbers are allocated, a user can view cameras on monitors or PC panes in the same way as controlling a matrix. This functionality is supported using keyboards which provides an efficient and familiar control method to end users.

Any number of users can use the virtual matrix functionality at the same time, giving a very powerful system.

Up to 999 cameras and 999 monitors can be numbered, making Control Center a 999 x 999 virtual matrix.



Control Center's Virtual Matrix showing cameras and monitors with matrix numbers

IndigoVision Control Center

A professional CCTV application with the power to view, record, play back and administer video and audio over IP networks

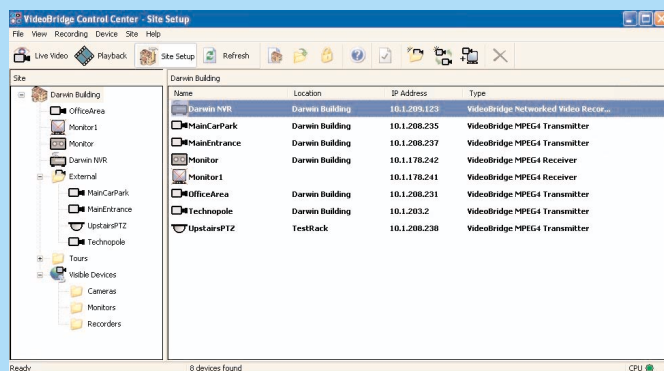
Administration

Site Setup View

This view allows administrators to manage network devices, sites, recordings and the recording schedule. In Control Center, a site can include cameras from many different geographical locations and networks.

Device Discovery

On startup, Control Center automatically detects all VideoBridge devices that are on the same local network as your PC. If required, administrators can also specify scan addresses to discover devices on other networks.



Control Center's Site Setup View

email: sales@indigovision.com

EUROPE

IndigoVision Ltd.
The Edinburgh Technopole
Bush Loan Edinburgh
Scotland EH26 0PJ

T: +44 (0)131 475 7200
F: +44 (0)131 475 7201

U.S.A.

IndigoVision Inc.
Suite 111
50 Cragwood Road
South Plainfield
NJ 07080 USA

T: +1 908 315 0288
F: +1 908 822 0031

CANADA

IndigoVision Ltd.
250-10 Wyecroft Rd
Oakville, ON
L6K 3T7

T: +1 905 842 4178
F: +1 905 842 3589

Order Codes

Control Center 2 080009
Windows NVR - per stream 080001

VideoBridge™ is a registered trademark
in the United States of America

Doc ID:IV-072-4.0

Sites

Sites are set up by administrators, and define which VideoBridge devices are available for operators to view. Administrators can group cameras into sub-sites to ease navigation of a large site.

Maps

Maps provide a pictorial representation of site(s). Administrators can create any number of maps for a site, then position cameras and alarm sources on the map.

User Accounts and User Access

The Administrator user account provides access to all functions within Control Center. The administrator can set up any number of Operator user accounts, and can specify which sites and cameras each user can access, and which functions they can perform, for example, view only, or control PTZ cameras.

Alarm Sources

Administrators can specify which sources alarms should be viewed from, and the time period when alarm sources are active.

Motion Detection

Control Center can be used to configure the motion detection facility available in VideoBridge units. A "region of interest" can be specified, which ignores particular areas if required.