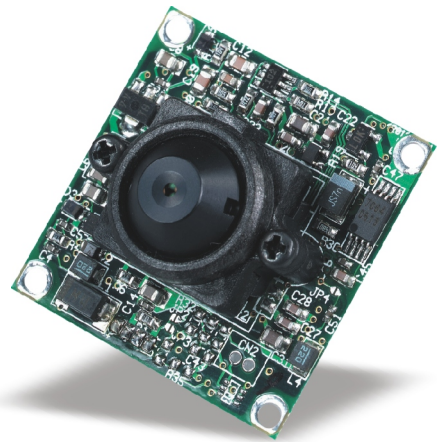


BOARD CAMERA



FEATURE

DSP Board camera
 Auto Trace white balance
 2H Mode Aperture Correction
 Electronic shutter up to 1/100,000 sec
 Night vision available for colour camera
 CS mount / varifocal auto iris lens available

| ITEMS | MONOCHROME | COLOUR |
|----------------------------------|--|---------------------------------|
| Pick-up Device | 1/3" CCD image sensor | |
| Picture Elements | Sony & Samsung chip: NTSC/EIA: 510*492 / 768*494 (hi-res.), PAL/CCIR: 500*582 / 752*582 (hi-res.) | |
| | Panasonic & Sharp chip: NTSC/EIA: 512*492 / 771*492 (hi-res.), PAL/CCIR: 512*582 / 753*582 (hi-res.) | |
| H. Sync Frequency | NTSC/EIA:15.734 KHz, PAL/CCIR:15.625 KHz | |
| V. Sync. Frequency | NTSC/EIA:59.94 Hz, PAL/CCIR:50 Hz | |
| Synchronization | DC:Internal / AC:External (Line lock)option | |
| Horizontal Resolution (TV lines) | 420 / 580(Hi-res.) | 380 / 480(Hi-res.) |
| Back Light Compensation | AUTO | |
| Electronic Shutter | AUTO, Range:1/50(1/60) ~ 1/100,000 sec. | |
| Gain Control | AUTO | |
| Lens (F2.0) | 3.6mm standard, 2.9mm, 3.7mm, 6mm, 8mm and 12mm | |
| Gamma Correction | 0.45 | |
| S/N Ratio | More than 48 dB (AGC OFF) | |
| Video Output | 1 Vp-p, 75 Ohms | |
| Power Supply | 12VDC, 24VAC (option) | |
| Power Consumption | 110/130mA (hi-res.) at DC power | 180/200mA (hi-res.) at DC power |
| Weight gr | Single board: 20, Twin boards: 40 | |
| Storage Temperature | -30°C ~ +60°C | |
| Operating Temperature | -10°C ~ +45°C | |

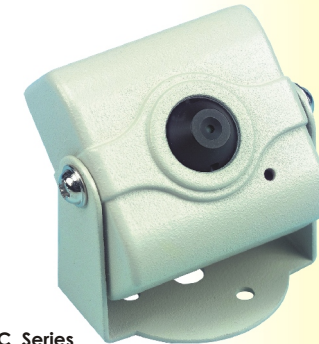
SPECIFICATIONS ARE SUBJECT TO CHANGE WITHOUT NOTICE

| New | Model | Image | B/W | Color | Med-res. | Hi-res. | CS Mount | Flickerless | Chip | Sensitivity (F2.0) | Dimension | Audio | LED |
|-----|---------|--------------|-----|-------|----------|---------|----------|-------------|------------|--------------------|----------------------|--------|--------|
| | HTC-243 | 1/3" | 0 | | 0 | | | | Samsung | 0.1 | 32*32mm single board | Option | |
| | HTC-253 | 1/3" | 0 | | 0 | | | 0 | Sony | 0.1 | 32*32mm single board | | |
| ★ | HTC-2A1 | 1/3" | | 0 | 0 | | | 0 | Sony | 1 | 42*42mm single board | | |
| ★ | HTC-2A2 | 1/3" | | 0 | 0 | | | 0 | Sony | 1 | 38*38mm single board | | Option |
| ★ | HTC-2A3 | 1/4" | | 0 | 0 | | | 0 | Sony | 1 | 32*32mm single board | | |
| ★ | HTC-2N3 | 1/4" | | 0 | 0 | | | 0 | Sharp | 2 | 32*32mm single board | | |
| ★ | HTC-2N9 | 1/4" | | 0 | 0 | | | 0 | Sharp | 1 | 22*26mm single board | | |
| ★ | HTC-2V1 | 1/3" | | 0 | 0 | | 0 | 0 | Panasonic | 1 | 42*42mm single board | | |
| ★ | HTC-2V3 | 1/4" or 1/3" | | 0 | 0 | | | 0 | Panasonic | 1 | 32*32mm single board | | |
| ★ | HTC-2V6 | 1/3" | | 0 | | 0 | 0 | 0 | Pro-vision | 0.1 | 42*42mm single board | | |

MINIATURE CAMERA



HTC-1A Series



HTC-3C Series

FEATURES

DSP Board camera
 Auto Trace white balance
 Corn type / flat type pin hole lens available
 Electronic shutter up to 1/100,000 sec
 Night vision available for color camera

| ITEMS | MONOCHROME | COLOUR |
|----------------------------------|--|-------------------------------|
| Pick-up Device | 1/3" CCD image sensor | 1/3" or 1/4" CCD image sensor |
| Picture Elements | Sony & Samsung chip: NTSC/EIA:510*492 / 768*494 (hi-res.), PAL/CCIR:500*582 / 752*582 (hi-res.) | |
| | Panasonic & Sharp chip: NTSC/EIA:512*492 / 771*492 (hi-res.), PAL/CCIR:512*582 / 753*582 (hi-res.) | |
| H. Sync Frequency | NTSC/EIA:15.734 KHz, PAL/CCIR:15.625 KHz | |
| V. Sync. Frequency | NTSC/EIA:59.94 Hz, PAL/CCIR:50 Hz | |
| Synchronization | Internal | |
| Horizontal Resolution (TV lines) | 420 / 580(Hi-res.) | 380 / 480(Hi-res.) |
| Back Light Compensation | AUTO | |
| Electronic Shutter | AUTO, Range:1/50(1/60) ~ 1/100,000 sec. | |
| Gain Control | AUTO | |
| Lens (F2.0) | 3.6mm (standard), 2.9mm, 3.7mm, 6mm, 8mm and 12mm option | |
| Gamma Correction | 0.45 | |
| S/N Ratio | More than 48 dB (AGC OFF) | |
| Video Output | 1 Vp-p, 75 Ohms | |
| Power Supply | 12VDC | |
| Power Consumption | 110/130mA (hi-res.) | 1/4" 100mA (hi-res.) |
| | | 1/3" 180/200mA (hi-res.) |
| Weight gr | 35*35mm: 60 , 45*45mm: 90 | |
| Storage Temperature | -30°C ~ +60°C | |
| Operating Temperature | -10°C ~ +45°C | |

SPECIFICATIONS ARE SUBJECT TO CHANGE WITHOUT NOTICE



| Model | Image | B/W | Color | Med-res. | Hi-res. | Chips | Sensitivity (F2.0) | Dimension | Audio |
|---------|-------|-----|-------|----------|---------|------------|--------------------|-----------|--------|
| HTC-1A3 | 1/3" | 0 | | 0 | | Sony | 0.1 | 45*45mm | |
| HTC-1A6 | 1/3" | 0 | | 0 | 0 | Sony | 0.2 | 45*45mm | |
| HTC-3C1 | 1/3" | 0 | | 0 | | Samsung | 0.1 | 35*35mm | Option |
| HTC-3C3 | 1/3" | 0 | | 0 | | Sony | 0.1 | 35*35mm | |
| HTC-1AA | 1/3" | | 0 | 0 | | Panasonic | 1 | 45*45mm | |
| HTC-1AE | 1/3" | | 0 | | 0 | Pro-vision | 0.1 | 45*45mm | |
| HTC-1AC | 1/3" | | 0 | 0 | | Sony | 1 | 45*45mm | |
| HTC-1AG | 1/3" | | 0 | | 0 | Sony | 2 | 45*45mm | |
| HTC-3CF | 1/4" | | 0 | 0 | | Sony | 1 | 35*35mm | |
| HTC-3CN | 1/4" | | 0 | 0 | | Sharp | 1 | 35*35mm | |

* For price and stock availability, please contact : 020 8965 0111 or e-mail : sales@huntelec.co.uk