

SHOCK DETECTORS



UN3

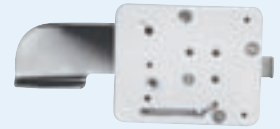
Vibration sensor; for safe & vault and ATM

- Power requirements: 9 ~ 15 V cc, 13m A @ 12VDC
- Tamper switch
- Remote LED output
- Dimensions: 110mmx80x33mm (h x w x d)
- Range: 2 to 20 Khz
- EN50131-1 Security Grade 3, Environmental Class II



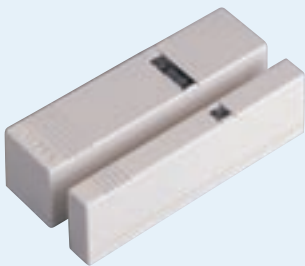
UN-300

Mounting plate for UN3



UN-352

Swing arm protection for Keylock.



VIPER-GLX

Viper GLX ASIC controlled Shock Sensor, Switch selectable patented Double Knock and Remote LED reset options

- Dual sensitivity control, auto reset of relay contacts
- Walk Test facility LED can be left to flash for deterrent if desired/held off or controlled remotely
- 5mA quiescent
- First to Alarm capability
- Coverage: Nominally 2.5metres radius (dependent on location and material).
- Sensitivity individually adjustable to suit local environmental conditions
- Screws supplied
- Dimensions: 85mm x 25mm x 23mm
- EN50131-1 Security Grade 3, Environmental Class II.

VIPER-GLX-W

PC.09000.20

White

VIPER-GLX-B

PC.09000.50

Brown

VIPER-GL-W

PC.09003.20

White

VIPER-GL-B

PC.09003.50

Brown

VIPER-GLX-W

PC.09004.20

Viper GLX with integral Door

Contact fitted within Alarm

Loop (white)

VIPER-GLX-B

PC.09004.50

Viper GLX with integral Door

Contact fitted within Alarm

Loop (brown)