

## NetAXS™

### Web-Based Access Control System for 2 and 4 Readers



Honeywell's NetAXS controller is a feature-rich access control solution with an intuitive Web interface. Available in 2 and 4-door options, NetAXS gives you all the benefits of traditional access control such as helping secure doors, managing employee access and sites remotely, and generating reports easily to meet compliance requirements.

NetAXS has been developed with an installer-friendly design that easily adapts to existing IT infrastructure and methods. This means reduced installation and support cost. Plus, NetAXS seamlessly integrates to Honeywell's fully-featured WIN-PAK software to enable more robust and sophisticated NetAXS integrations. So as your system grows, NetAXS grows with you.

#### Quick and Easy Installation

Installation is easy because the built-in interfaces do not require additional stand-alone or add-on communication modules. There is no need for special crossover Ethernet cables.

#### Remote Control Via The Internet

With the intuitive browser based interface, your learning curve and training time is significantly decreased. And you don't have to install a dedicated PC - simply log on and you're ready to go, securely - from the office or remotely.

#### NetAXS System Highlights Include:

- Dynamic screen functionality allows automatic updates of your web browser to show alarms and event information without having to hit the refresh button in your browser
- Export reports for analysis or record keeping
- Assign card holders different levels of access for added layer of security
- Supports multiple users with different global languages simultaneously
- Configure a site using 2 and/or 4-door controllers
- Field-upgrade the 2-door controller when you need to add more doors to the site

## NETAXS OFFERINGS

The standard enclosure incorporates the NetAXS access controller, built-in transformer and back-up battery. The 2 and 4 door panels share the same hardware platform, making upgrades easy. Both 2 and 4 door panels are designed for Web and WIN-PAK® use and can be used for direct TCP/IP connectivity in a gateway configuration.

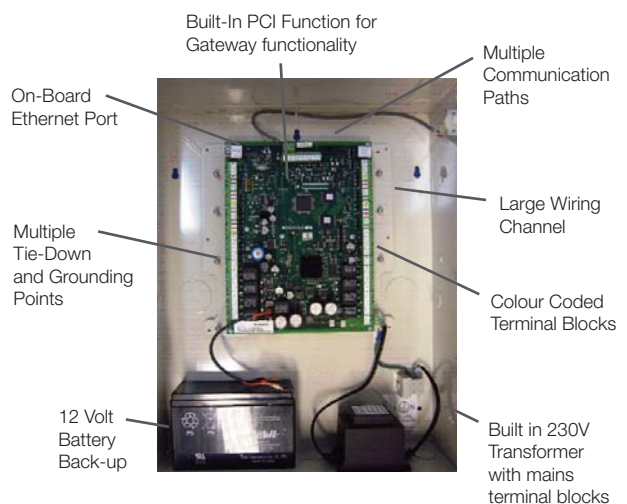
#### 2-Door Standard Enclosure

NetAXS 2-door with a standard enclosure is the web based 2-door choice for an entry level access control solution.

It allows a license upgrade to a full 4-door NetAXS system or it can be a gateway to 4-door panels allowing expansion up to 122 doors in one web interface.

#### 4-Door Standard Enclosure

NetAXS 4-door with a standard enclosure is the traditional 4-door choice and allows easy upgrades to an existing access control system.

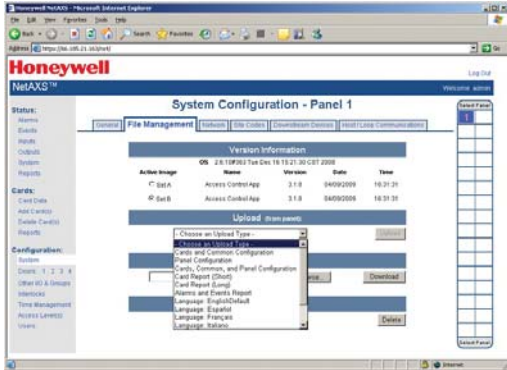


**Eliminate additional set-up costs with intuitive installation – one panel does it all.**

# NetAXS™

## Web-Based Access Control System for 2 and 4 Readers

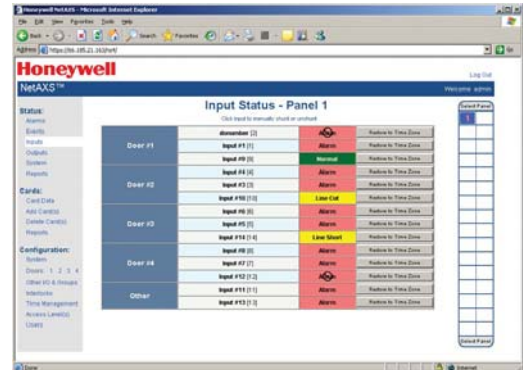
### SYSTEM BENEFITS



#### Export Data

From the File Management tab in the Configuration System selection view, you can see the range of data sets that you can get from NetAXS.

This includes the ability to save copies of the card database and panel configuration database that are helpful files to keep as back-ups. Alarms and events can also be retrieved from NetAXS for record keeping or analysis offline. Card reports are available in CSV format and can be edited using Microsoft Excel and then downloaded to NetAXS.

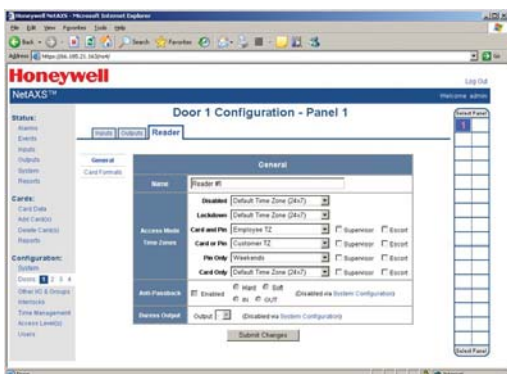


#### Dynamic Screen Updates

With NetAXS, dynamic screens refresh data automatically without having to refresh the page. This allows status updates from NetAXS to be pushed out to the Web screens automatically, without user interaction.

Alarms, events, inputs, outputs, and status screens all automatically update as information is received.

Data transfer between the controller and web browsers has been optimised to reduce bandwidth requirements, improving screen response times.

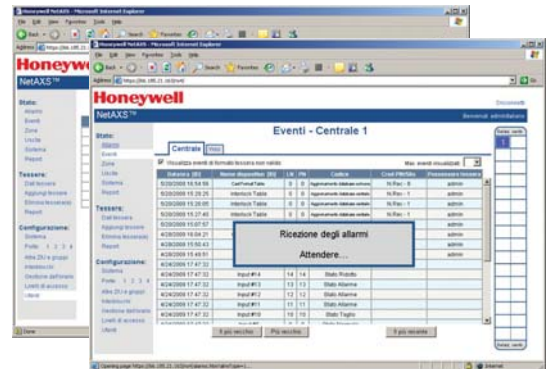


#### Door Access Modes and Options

NetAXS allows you to assign card holders different levels of access.

Supervisor access allows an employee to present their card once to the reader to give individual access. If the supervisor presents their card twice, they enable access for their team during the specified time zone.

Escort access requires a supervisor escort for a non-supervisor cardholder. The supervisor must present his card first, then the non-supervisor must present his card within ten seconds of the supervisor's card read.



#### Global Language Support

NetAXS can support multiple users with different languages simultaneously.

Language files are available to the user by uploading them from the NetAXS controller and can be customised to correct regional phrases and wording. Global language support is available in Spanish, Italian, French, Czech, Dutch and simplified Chinese.

## FEATURES

### System Overview:

- 2 or 4 reader Web enabled panel
- 600mA auxiliary current available to power the readers and other devices
- Removable terminal blocks with colour coded labels for installer's ease of wiring
- Multiple status LEDs (19 total) - power, system run, Ethernet, RS232, loop, downstream, reader and relay state
- Multiple door control models: card only, card and PIN, card or PIN, PIN only, lockdown, disabled, supervisor, escort, N-Man rule, limited use card, expire on date, first card rule, snow day rule, time zone toggle, anti-pass back, duress
- Interlocks for creating custom actions during a specific occurrence
- Real time clock with global geographic time zone support and daylight savings time
- Real time clock can be synchronised via NTP network based time servers
- Freescale Coldfire 32bit, 200Mhz processor
- System MTBF (mean time between failures) 250,000 hours
- Temperature: 0°C to 49°C operating, -55°C to +85°C storage
- UL294 listing and CE certifications
- Dimensions (HxWxD): 457.2 x 368.3 x 111.8mm

### Communication

- Multiple communication options: Built-in Ethernet, RS232 and RS485
- Reverse IP Ethernet communications to WIN-PAK® Central Station is supported

- One RS485 for connecting up to 31 total panels in a site loop
- Site loop enables one web or host connection to view and manage up to 124 doors
- Built-in interface does not require additional stand-alone or add-on communication modules
- No need for special crossover Ethernet cables
- Compatible with existing WIN-PAK® and N-1000\* control panel installations
- Web browser and host software based hybrid capability

### Database

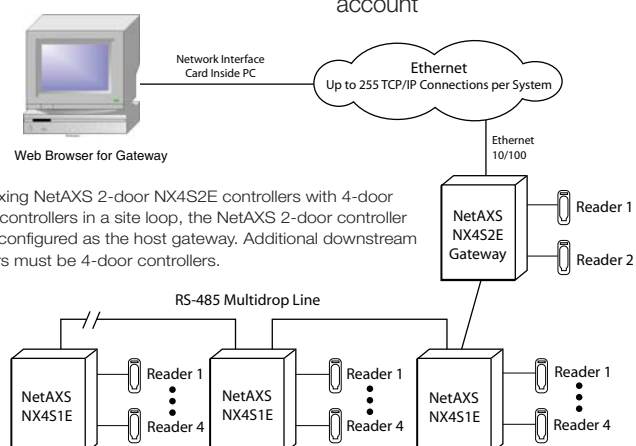
- 10,000 card capacity, 25,000 buffer capacity
- Flash memory storage for all database information – no on-board memory batteries to replace
- Flash programming for firmware revision updates and feature expansions
- Card and configuration databases are accessible and can be backed-up offline
- Card database is exportable in common CSV format for managing, modifying, adding and deleting cards
- Up to 128 unique card formats are supported up to a maximum of 75 bits

### Reporting and Analysis

- Integrated basic reports
- Import and export of the card database
- Alarms and events can be exported and saved in offline storage

### Embedded Web Server

- Embedded web server supporting all access control functions
- Internet Explorer and Mozilla Firefox browsers are fully supported
- Full control through the web browser; monitor and view live events; manually control doors and readers
- The web interface uses SSL and SHA-1 secure socket layer encryption for secure web browsing
- Web screens that are used for monitoring events, alarms, inputs and outputs automatically refresh without user intervention
- Multiple user connections to the web interface are supported enabling local and remote simultaneous monitoring of the system
- Global language support in the web interface. Italian, French, Dutch, Spanish, Czech and simplified Chinese are included
- Users can also export, import, modify, create and add their own translated files and have their own language file specific to their login account



\* Consult [www.honeywell.com/security/uk](http://www.honeywell.com/security/uk) for exact specifications. Not compatible with 20mA C-100-A1 interface, AEP-3 relay expanders, 10-wire matrix keypads and Inputs 15 and 16.

# NetAXS™

## Web-Based Access Control System for 2 and 4 Readers

### FEATURES

Feature Comparison Between 2 and 4-Door NetAXS Panels		
Feature	2-door Panel	4-door Panel
Readers	2 (1 per door or in/out for 1 door) Expandable up to 122 readers via NetAXS 4 door panels	4 (1 per door or in/out for 2 doors) Expandable up to 122 readers via NetAXS 4 door panels
Field upgrade to 4 door capability with a softkey file	Yes	N/A
Output relay SPDT, Form C relays rates at 10A@28VDC	2 for doors, 6 for auxiliary use	4 for doors, 4 for auxiliary use, expandable up to 72 outputs per panel
Four-state supervised input points	6 for doors, 6 for auxiliary use, 2 dedicated panel tamper alarm and power fail inputs	12 for doors, 2 dedicated panel tamper alarm and power fail inputs, expandable up to 78 inputs per panel
One RS485 downstream connection	N/A	Connection for connecting up to 6 downstream I/O expansion modules
One RS485 for connecting up to 31 total panels in a site loop	Only 4 door panels in host RS485 site loop - Site loop enables one web or host connection to view and manage up to 122 doors	Only 4 door panels in host RS485 site loop - Site loop enables one web or host connection to view and manage up to 124 doors

### ORDERING

Part Number	Description
<b>NX4S2E</b>	NetAXS 2-door access controller in standard enclosure, built-in 230V transformer, two surge suppressors and back-up battery
<b>NX4S1E</b>	NetAXS 4 door access controller in standard enclosure, built-in 230V transformer, four surge suppressors and back-up battery
<b>NX4UPG2T4</b>	NetAXS 2 door to NetAXS 4 door upgrade *Contact Honeywell Customer Service for upgrade procedure.

**NOTE:** Honeywell reserves the right, without notification, to make changes in product design or specifications.

#### For additional information,

please visit [www.honeywell.com/security/uk](http://www.honeywell.com/security/uk)

#### Honeywell Security & Data Collection

Honeywell Systems Group

Charles Avenue

Burgess Hill

West Sussex

RH15 9UF

Tel: 01444 251180

[www.honeywell.com](http://www.honeywell.com)

HAS-NETAXS24-01-EN(0609)DS-GCSC  
June 2009  
© 2009 Honeywell International Inc.

