

DT-7360

Dual Technology Motion Sensor



FEATURES

Microwave Advanced Processing (MAP)

Microwave/PIR Technology

Built-in Diagnostics and Supervision

Remote LED

Ceiling Mount Design

Microcontroller-Initiated Self-Tests

Trouble Output



Suitable in Security Grade 2
Environmental Class II, Type B

DT-7360

Dual Technology Motion Sensor

SPECIFICATIONS

Dimensions:	130 mm x 130 mm x 60 mm (h x w x d) White high impact ABS plastic housing
Weight:	397 g
Power requirements:	10 – 14.5 VDC, 40 mA typical
Trouble Output:	Form B, 125 mA, 25 VDC.
Alarm relay:	Energised Form C: (N.O./N.C.) relay rated 125 mA max @ 25 VDC
Command Output:	Self-test initiate Active: 0 - 1.5 V (low), Inactive: 6 - V+ (high), Impedance: 110K (minimum)
Microwave:	K-band
Tamper switch:	Ceiling and cover tamper switches; Form A (N.C.) switch rated 25 mA, 30 VDC
Operating Temperature:	-10°C – 49°C, 5% to 95% relative humidity, non-condensing
RFI Immunity:	30 Vm, from 10MHz - 1000 MHz
PIR White Light Immunity:	900 LUX
Approvals:	FCC certified, UL listed, DTI approved, CE, EN50131-1 Security Grade 2, Environmental Class II

Detection Patterns:

PIR Fields of view

(8 - 3.4m mirror assembly) 360° fields:

Long Range:	36
Intermediate:	24
Lower:	16
Look-down:	1

(3.7 - 4.9m mirror assembly) 360° fields:

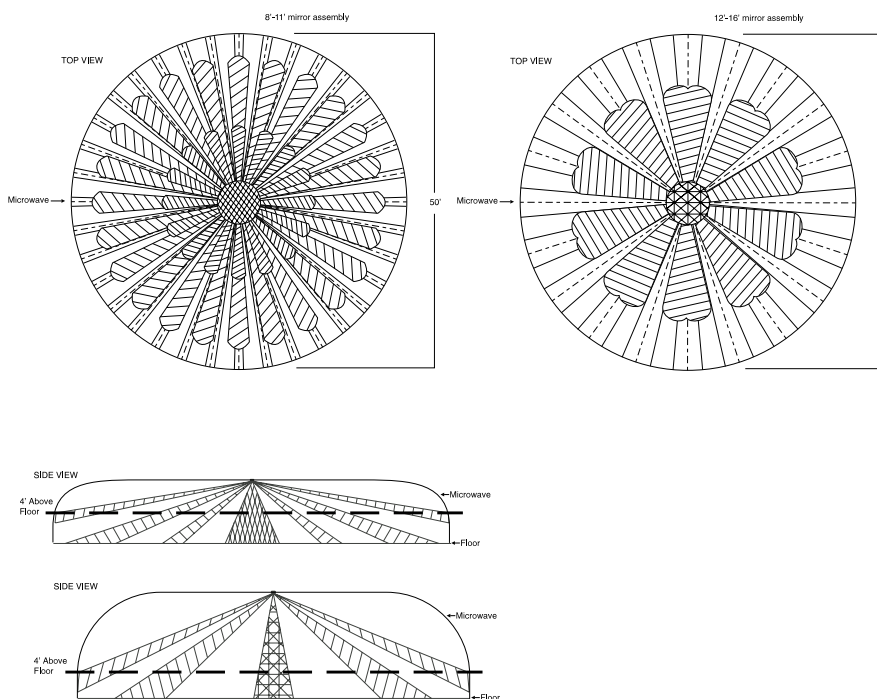
Long Range:	40
Intermediate:	20
Look-down:	1

PIR Sensitivity

2 - 4 Steps within field of view

Detection range:

15m diameter, 7.6m radius



ORDERING